

**AIP SUPPLEMENT
(SUP)****AIRAC****H41/22****Effective: 202207131600 UTC**AERONAUTICAL INFORMATION SERVICE,
AIRSERVICES AUSTRALIA, GPO BOX 367,
CANBERRA ACT 2601For **DISTRIBUTION** queries, contact:
Email: aim_editorial@airservicesaustralia.comFor **CONTENT** queries regarding this SUP, contact:
Email: bas@globalairspaceolutions.com**WILLIAMTOWN DAP PROCEDURES FOR
TEMPORARY DISPLACED THRESHOLD
RWY 30****1. INTRODUCTION**

- 1.1 This AIP SUP publishes revised procedures for use during the displaced threshold of RWY 30 at Williamtown (YWLM).
- 1.2 The procedures published in this SUP are to be used only when RWY 30 THR is displaced by 1,220M. The existing RNP RWY 30 chart published in DAP will be renamed RNP Z RWY 30 for the period of the runway works and is to be used when the displaced threshold is not in place. A NOTAM will be issued to indicate when the threshold is displaced.
- 1.3 RNP Y RWY 30 and NDB-X RWY 30 have incorporated the displaced THR RWY 30.
- 1.4 Temporary changes to RWY 30 are published by an additional SUP, available online: www.airservicesaustralia.com/aip/aip.asp.

2. IMPLEMENTATION

- 2.1 The procedures in the appendices become effective 202207131600 UTC.

3. NEW DISPLACED THRESHOLD

RWY	LAT	LONG	ELEV
30	324752.29S	1515015.21E	22FT

4. WAYPOINTS

WM2EM	324817.85S	1515050.99E	MAPt RNP Y RWY 30
-------	------------	-------------	-------------------

5. PROCEDURE DIFFERENCES

- 5.1 The differences between RNP Z RWY 30 and RNP Y RWY 30 procedures include:
- Procedure name
 - DTHR location and elevation
 - RW30 replaced by WM2EM (same coordinates)
 - FAF altitude
 - Distance/altitude table
 - Added caution note
- 5.2 The differences between NDB-Z RWY 30 and NDB-X RWY 30 procedures include:
- Procedure name
 - DTHR location and elevation
 - FAF altitude
 - Distance/altitude table
 - Added caution note

6. CANCELLATION

- 6.1 This SUP will be cancelled when the Phase 1 works are complete, expected to be 30 August 2022.

7. DISTRIBUTION

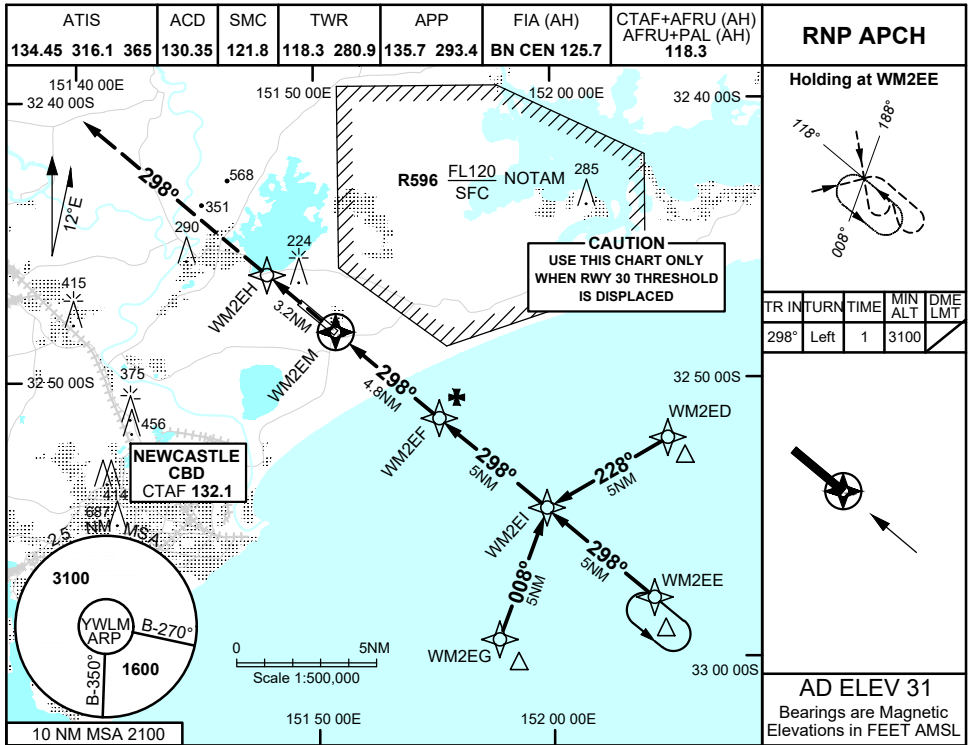
- 7.1 Airservices Australia website only.

Appendices

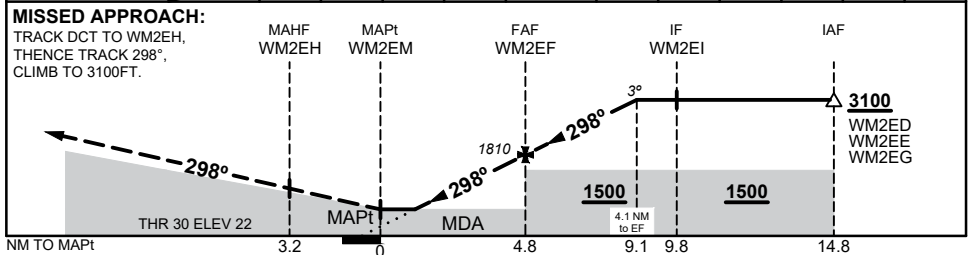
1. RNP Y RWY 30
2. NDB-X RWY 30

**APPENDIX 1
TO SUP H41/22**

**RNP Y RWY 30
WILLIAMTOWN, NSW (YWLM)**



NM TO NEXT WP	WM2EM	1	2	3	4	WM2EF	1	2	3	4	4.1
ALT (3° APCH PATH)		610	920	1240	1550	1810	2130	2450	2760	3080	3100



- NOTES**
- MAX IAS:
INITIAL : 210KTS

CATEGORY	A	B	C	D
LNAV	610 (588 - 2.6)			
CIRCLING	660 (629 - 2.4)		760 (729 - 4.0)	
ALTERNATE	(1129 - 4.4)		(1529 - 7.0)	

Changes: NEW PROCEDURE

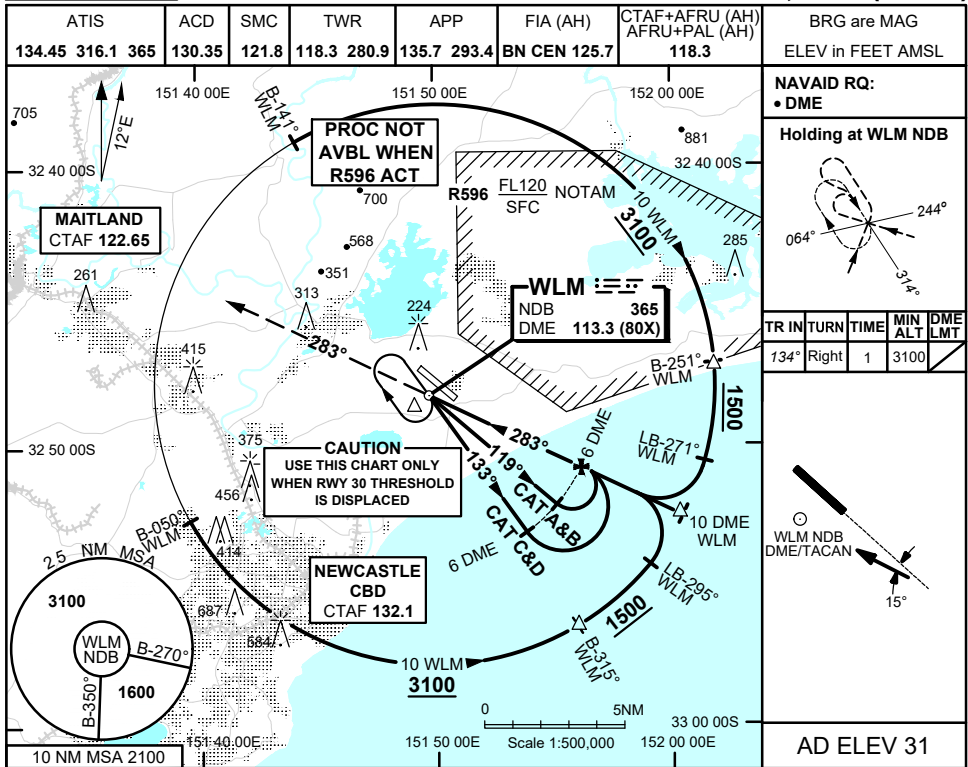
WLMGN04-SUP

**APPENDIX 2
TO SUP H41/22**

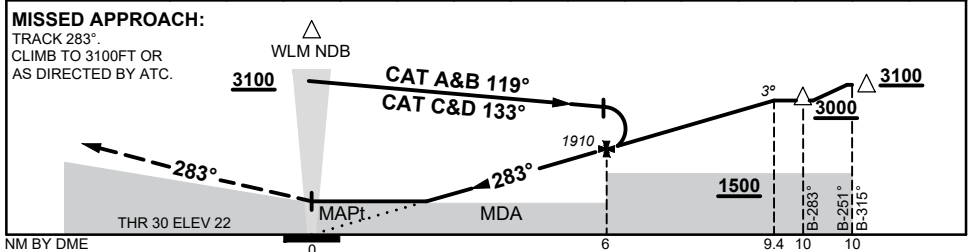
USE QNH

NDB-X RWY 30

WILLIAMTOWN, NSW (YWLM)



DIST BY DME	1.9	2	3	4	5	6	7	8	9	9.4			
ALT (3° APCH PATH)	610	630	950	1270	1590	1910	2230	2550	2870	3000			



NOTES

1. MAX IAS:
INITIAL: 210KTS
 2. ACFT MAY BE RADAR VECTORED TO FAF.
- CAUTION:**
3. MAP OVERLAYS
MAITLAND RNAV-W
MAP.

CATEGORY	A	B	C	D
S-I NDB/DME	610 (588 - 3.4)			
CIRCLING	660 (629 - 2.4)		760 (729 - 4.0)	1060 (1029 - 5.0)
ALTERNATE	(1129 - 4.4)		(1229 - 6.0) (1529 - 7.0)	

Changes: NEW PROCEDURE

WLMNB05-SUP