

**AIP SUPPLEMENT
(SUP)****AIRAC****H44/22****Effective: 202207131600 UTC**

AERONAUTICAL INFORMATION SERVICE,
AIRSERVICES AUSTRALIA, GPO BOX 367,
CANBERRA ACT 2601

For **DISTRIBUTION** queries, contact:
Email: aim_editorial@airservicesaustralia.com

For **CONTENT** queries regarding this SUP, contact:
Email: fpd@airservicesaustralia.com

CANBERRA AIRPORT (YSCB) NEW BUNGO (NON-JET) STANDARD INSTRUMENT ARRIVALS (STAR)

1. INTRODUCTION

- 1.1 This AIP SUP introduces new BUNGO (non-jet) Standard Instrument Arrivals (STAR).
- 1.2 The purpose is to connect BUNGO (a waypoint on the YSSY to YSCB non-jet ATS Route V169) to the existing RNP-AR approaches for both RWY 17 and RWY 35.

2. CHANGES

- 2.1 The new STAR are:
 - RWY 35 BUNGO FOUR WHISKEY ARRIVAL (NON-JET) (RNAV)
 - RWY 35 BUNGO FOUR YANKEE ARRIVAL (NON-JET) (RNAV)
 - RWY 17 BUNGO FOUR YANKEE ARRIVAL (NON-JET) (RNAV)
- 2.2 The RNP W RWY 17 (AR) approach has been included on the BUNGO FOUR ALPHA ARRIVAL (NON-JET) (RNAV) chart as a approach option.
- 2.3 Existing BUNGO VICTOR STAR validity indicator has been increased to FOUR, but are otherwise unchanged.
- 2.4 Speed restriction at FOXLO included on the RNP W RWY 35 (AR) chart.
- 2.5 Speed restriction at CB441 reduced to MAX IAS 230KT on the RNP Y RWY 35 (AR) chart.

3. IMPLEMENTATION

3.1 The new BUNGO STAR will become effective 202207131600 UTC.

4. CANCELLATION

4.1 This SUP will be cancelled when it is incorporated into AIP, expected to be in DAP Amendment 172, effective 08 SEP 2022

5. DISTRIBUTION

5.1 Airlservices Australia website only.

Appendices

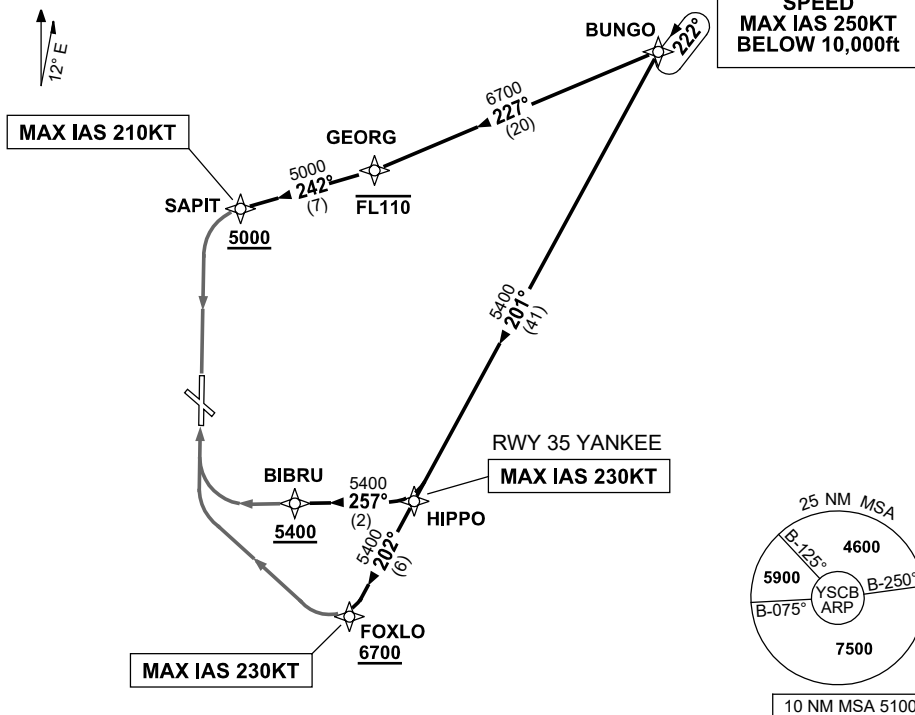
1. BUNGO FOUR WHISKEY, YANKEE ARRIVAL (NON-JET) (RNAV)
2. BUNGO FOUR ALPHA ARRIVAL (NON-JET) (RNAV)
3. BUNGO FOUR VICTOR ARRIVAL (NON-JET) (RNAV)
4. RNP W RWY 35 (AR)
5. RNP Y RWY 35 (AR)

**APPENDIX 1
TO SUP H44/22**

**STANDARD ARRIVAL ROUTE (STAR)
BUNGO FOUR WHISKEY, YANKEE ARRIVAL (NON-JET) (RNAV)
CANBERRA, ACT (YSCB)**

ATIS 116.7 127.45 263	AWIS (AH) 116.7	APP 124.5	TWR 118.7	SMC/ACD 121.7	FIA (AH) ML CEN 125.9	CTAF+AFRU (AH) AFRU+PAL (AH) 118.7	Bearings are Magnetic Elevations in FEET AMSL
--------------------------	--------------------	--------------	--------------	------------------	--------------------------	--	--

NOT TO SCALE



ARRIVAL: BUNGO FOUR

RWY 17 YANKEE:

- From BUNGO track 227° to GEORG
Cross GEORG AT or BLW FL110
- Turn RIGHT, track 242° to SAPIT
Cross SAPIT AT or ABV 5000ft
MAX IAS 210KT from SAPIT
- Track via RNP Y RWY 17 (AR) approach

RWY 35 WHISKEY:

- From BUNGO track 201° to HIPPO
- Turn RIGHT, track 202° to FOXLO
Cross FOXLO AT or ABV 6700ft
MAX IAS 230KT from FOXLO
- Track via RNP W RWY 35 (AR) approach

RWY 35 YANKEE:

- From BUNGO track 201° to HIPPO
MAX IAS 230KT from HIPPO
- Turn RIGHT, track 257° to BIBRU
Cross BIBRU AT or ABV 5400ft
- Track via RNP Y RWY 35 (AR) approach

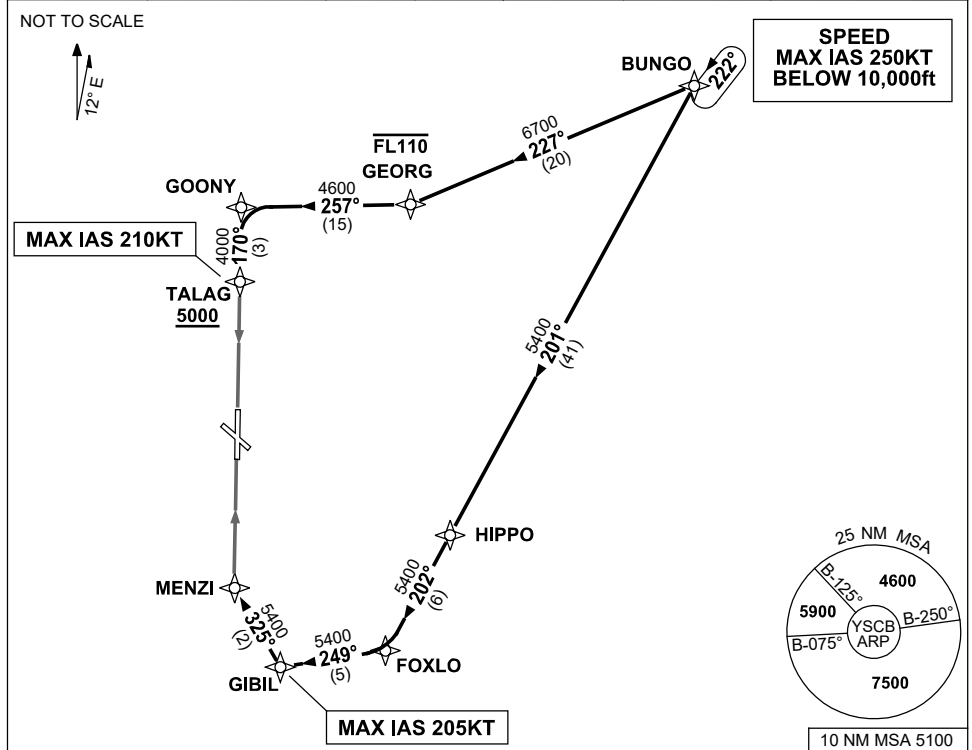
COMMUNICATIONS FAILURE: PROCEDURE IN IMC

- Squawk 7600, comply with vertical navigation requirements, but not below MSA.
- Track via the latest STAR clearance to the nominated runway, then fly the most suitable approach in accordance with ERSA EMERG Section 1.5.

**APPENDIX 2
TO SUP H44/22**

**STANDARD ARRIVAL ROUTE (STAR)
BUNGO FOUR ALPHA ARRIVAL (NON-JET) (RNAV)
CANBERRA, ACT (YSCB)**

ATIS 116.7 127.45 263	AWIS (AH) 116.7	APP 124.5	TWR 118.7	SMC/ACD 121.7	FIA (AH) ML CEN 125.9	CTAF+AFRU (AH) AFRU+PAL (AH) 118.7	Bearings are Magnetic Elevations in FEET AMSL
--------------------------	--------------------	--------------	--------------	------------------	--------------------------	--	--



ARRIVAL: BUNGO FOUR

RWY 17 ALPHA:

- From BUNGO track 227° to GEORG
Cross GEORG AT or BLW FL110
- Turn RIGHT, track 257° to GOONY
 - Turn LEFT, track 170° to TALAG
Cross TALAG AT or ABV 5000ft
MAX IAS 210KT from TALAG
 - Track via RNP W RWY 17 (AR) or VOR RWY 17 approach

RWY 35 ALPHA:

- From BUNGO track 201° to HIPPO
- Turn RIGHT, track 202° to FOXLO
 - Turn RIGHT track 249° to GIBIL
MAX IAS 205KT from GIBIL
 - Turn RIGHT, track 325° to MENZI
 - Track via ILS, RNP Z, LOC or VOR RWY 35 approach.

COMMUNICATIONS FAILURE: PROCEDURE IN IMC

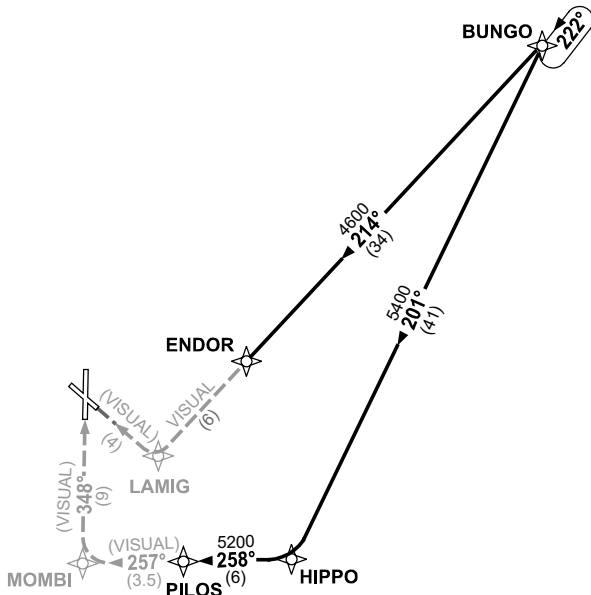
- Squawk 7600, comply with vertical navigation requirements, but not below MSA.
- Track via the latest STAR clearance to the nominated runway, then fly the most suitable approach in accordance with ERS A EMERG Section 1.5.

**APPENDIX 3
TO SUP H44/22**

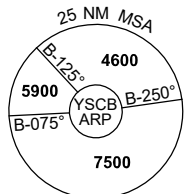
**STANDARD ARRIVAL ROUTE (STAR)
BUNGO FOUR VICTOR ARRIVAL (NON-JET) (RNAV)
CANBERRA, ACT (YSCB)**

ATIS 116.7 127.45 263	AWIS (AH) 116.7	APP 124.5	TWR 118.7	SMC/ACD 121.7	FIA (AH) ML CEN 125.9	CTAF+AFRU (AH) AFRU+PAL (AH) 118.7	Bearings are Magnetic Elevations in FEET AMSL
--------------------------	--------------------	--------------	--------------	------------------	--------------------------	--	--

NOT TO SCALE



**SPEED
MAX IAS 250KT
BELOW 10,000FT**



10 NM MSA 5100

ARRIVAL: BUNGO FOUR

RWY 30 VICTOR:

- From BUNGO track 214° to ENDOR
- Track 214° VISUAL to LAMIG
- Turn RIGHT, intercept VISUAL final RWY 30

RWY 35 VICTOR:

(HJ ONLY)

- From BUNGO track 201° to HIPPO
- Turn RIGHT, track 258° to PILOS
- Track 257° VISUAL to MOMBI
- Turn RIGHT, intercept VISUAL final RWY 35

COMMUNICATIONS FAILURE: PROCEDURE IN IMC

- Squawk 7600, comply with vertical navigation requirements, but not below MSA.
- Track via the latest STAR clearance to the nominated runway, then fly the most suitable approach in accordance with ERS A EMERG Section 1.5.

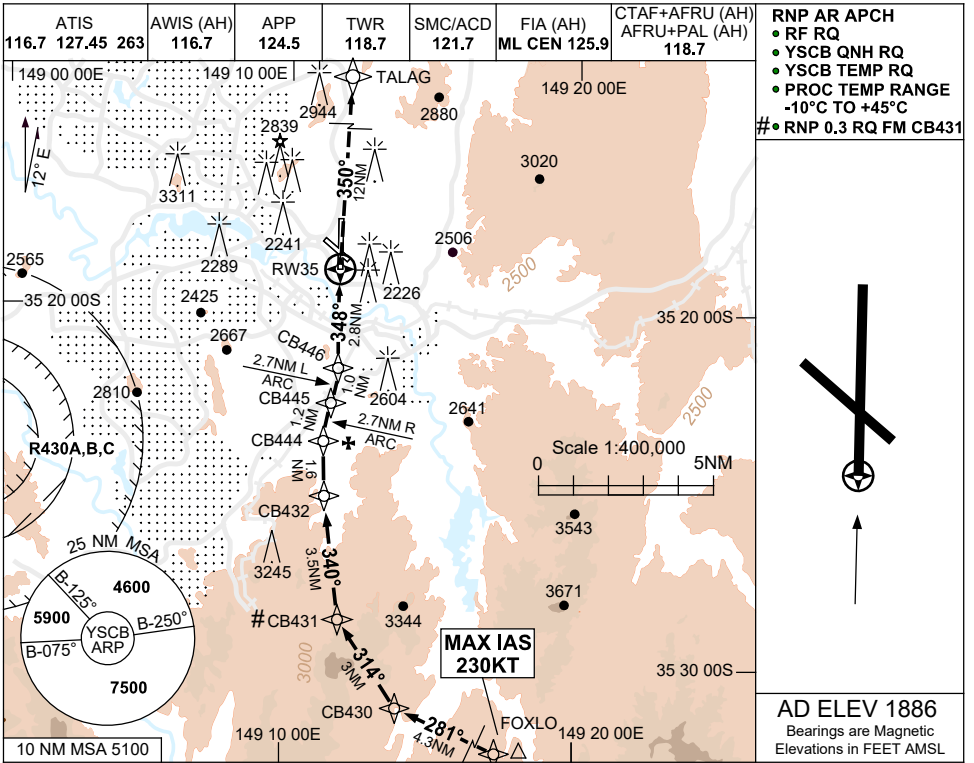
FOR CASA APPROVED OPERATORS ONLY

USE QNH

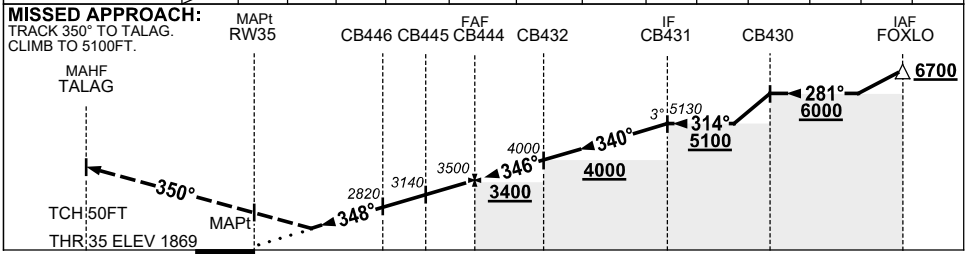
RNP W RWY 35 (AR)

CANBERRA, ACT (YSCB)

APPENDIX 4
TO SUP H44/22



NM TO NEXT WPT	RW35	0.9	1.2	1.9	CB446	CB445	CB444	CB432	1	2	CB431		
ALT (3° APCH PATH)		2200	2290	2530	2820	3140	3500	4000	4320	4640	5130		



CATEGORY	A	B	C	D
RNP (0.3)(2.5% MAP)		2530 (661-3.8)		
RNP±(0.3)(5.0% MAP)		2290 (421-2.4)		
RNP±(0.11)(5.0% MAP)		2200 (331-1.8)		
CIRCLING	NOT AUTHORISED			
ALTERNATE	(1864-4.4)		(2094-6.0)	(2234-7.0)

- NOTES**
- MIN MAP GRAD 5% TO 3200FT, THEN 2.5%.
 - COLOUR: SEE SPEC NOTICES.

Changes: SPEED RESTRICTION.

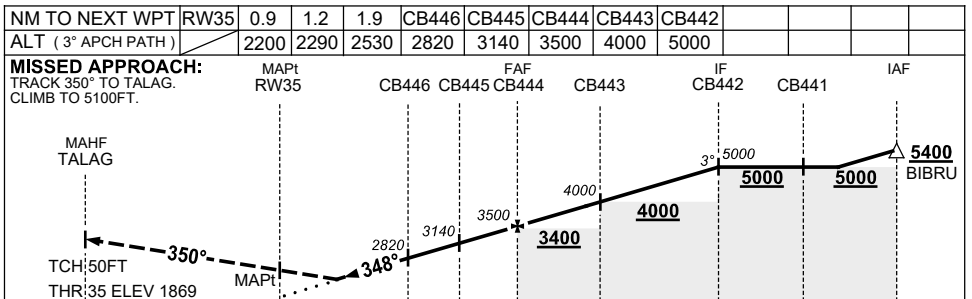
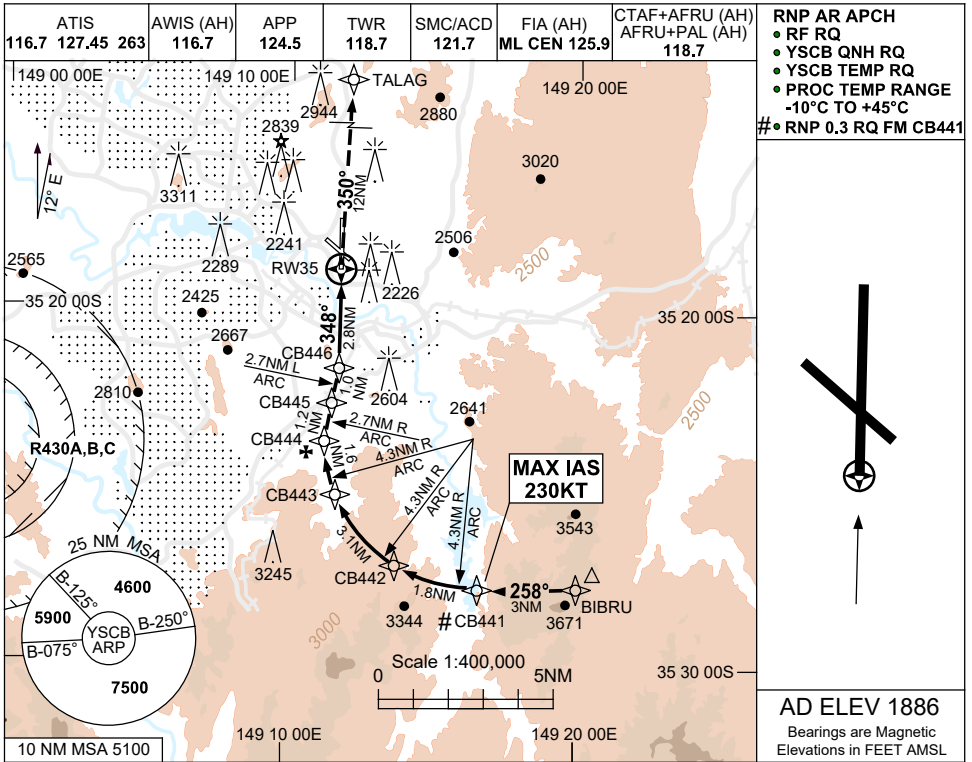
SCBGN13-SUP

FOR CASA APPROVED OPERATORS ONLY

APPENDIX 5
TO SUP H44/22

USE QNH

RNP Y RWY 35 (AR)
CANBERRA, ACT (YSCB)



CATEGORY	A	B	C	D
RNP (0.3)(2.5% MAP)		2530 (661-3.8)		
RNP±(0.3)(5.0% MAP)		2290 (421-2.4)		
RNP±(0.11)(5.0% MAP)		2200 (331-1.8)		
CIRCLING	NOT AUTHORISED			
ALTERNATE	(1864-4.4)		(2094-6.0)	(2234-7.0)

NOTES
 #1. MIN MAP GRAD 5% TO 3200FT, THEN 2.5%.
 2. COLOUR: SEE SPEC NOTICES.

Changes: SPEED RESTRICTION, Editorial.

SCBGN16-SUP