

**AERONAUTICAL
INFORMATION
CIRCULAR (AIC)**

AERONAUTICAL INFORMATION SERVICE,
AIRSERVICES AUSTRALIA, GPO BOX 367,
CANBERRA ACT 2601

H25/25**Effective: 202504220000 UTC**

For DISTRIBUTION queries, contact:
Email: aim.editorial@airservicesaustralia.com

For CONTENT queries regarding this AIC, contact:
Email: matcal1@bmd.com.au Phone: 0466 824 352

RICHMOND (NSW) AERODROME (YSRI) RAAF BASE WORKS NOVEMBER 2024 - NOVEMBER 2025

1. INTRODUCTION

- 1.1 This AIC cancels and replaces AIC H23/25 with changes to para 2, and the addition of para 3.
- 1.2 The Department of Defence has scheduled aerodrome upgrade works from 07 November 2024 till the end of November 2025.
- 1.3 The work is conducted at night and requires the closure of the runway and some taxiways. The work consists of pavement and Aeronautical Ground Lighting (AGL) works.
- 1.4 Detailed descriptions of the works are available in a Method of Working Plan, please email 121-2115-mailbox@bmd.com.au for a copy.

2. WORKS PROGRAMME

- 2.1 The contractor is on stand down where RWY 10/28 will remain open:
 - a) From 17 April 2025 to 27 April 2025.
- 2.2 Beginning from 202504271000 UTC onwards, the works requires a standing program with RWY 10/28 closed:
 - a) Sunday to Wednesday, 1000 – 2200 UTC daily.
 - b) Thursdays, 1200 – 2300 UTC.

- 2.3 The following RWY closure times supersede the standing RWY closure times in para 2.2:
- a) 202505051100 – 202505052200 UTC.
 - b) 202505061100 – 202505062200 UTC.
 - c) 202505071100 – 202505072200 UTC.
 - d) 202505191100 – 202505192200 UTC.
 - e) 202505201100 – 202505202200 UTC.
 - f) 202505211100 – 202505212200 UTC.
- 2.4 “Super weekends” can be made available subject to prior notice and Senior Australian Defence Force Officer (SADFO) approval. This is a full or partial runway closure from 2000 Local Friday to 2200 Local Monday.

3. WORKS SCOPE

- 3.1 The scope includes but is not limited to:
- a) RWY asphalt mill and overlay work - 3 layers.
 - b) Under TWY C and D drainage work.
 - c) TWY C and D asphalt work.
 - d) AGL work.
- 3.2 The works will be conducted in three phases.
- 3.2.1 Phase 1 works has been conducted on the RWY/TWY network as shown in Appendix 1.
- 3.2.2 Phase 2 and 3 works will be conducted as shown in Appendix 2.

4. CANCELLATION

- 4.1 This AIC will be cancelled when the works have been completed.

5. DISTRIBUTION

- 5.1 Airservices Australia website only.

Appendices

- 1. Layout of Phase 1 completed works
- 2. Layout of Phase 2 and 3 works

1. Layout of Phase 1 completed works

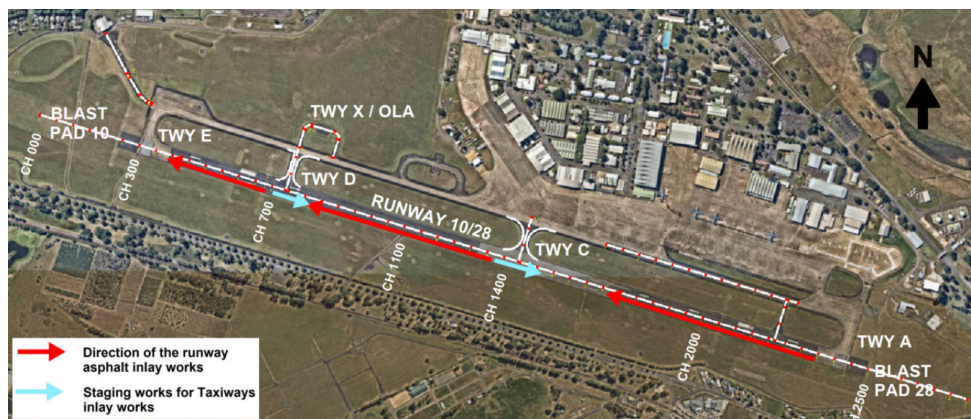


Diagram 1 outlines the area and scope of works to be undertaken on Phase 1 of the construction works. Asphalt inlay works.

2. Layout of Phase 2 and 3 works



Diagram 2 outlines the area and scope of works to be undertaken on Phase 2 (Corrector Course) and Phase 3 (Wearing Course) of the construction works. Directions are general only and may be changed due to operational requirements.