

**AERONAUTICAL
INFORMATION
CIRCULAR (AIC)****H14/22****Effective: 202205020100 UTC**

AERONAUTICAL INFORMATION SERVICE,
AIRSERVICES AUSTRALIA, GPO BOX 367,
CANBERRA ACT 2601

For **DISTRIBUTION** queries, contact:
Email: aim_editorial@airservicesaustralia.com

For **CONTENT** queries regarding this AIC, contact:
Email: airfieldsupport@melair.com.au Phone: 03 8326 2525

MELBOURNE AIRPORT (YMML) TAXIWAY ALPHA CLOSURE – IMPACTS TO RUNWAY 16 OPERATIONS

1. INTRODUCTION

- 1.1 This AIC is intended to provide notification to aircraft and ground operations regarding the closure of TWY A north of RWY 27 and south of TWY B to facilitate the reconstruction of TWY C and the associated impacts to RWY 16/34 operations. Refer MOWP YMML 2022/1 TWY A - C Project, which can be accessed via the Melbourne Airport website.
- 1.2 Stage 1 is a full closure of TWY A north of RWY 09/27. TWY A north of RWY 09/27 will not be available. Stage 2 is a full closure of TWY C east of TWY V.
- 1.3 Stage 1 and Stage 2 have both commenced with Version 1 of the MOWP (refer Appendix 1 and 2) and are scheduled to be completed by the end of November 2022 (estimated).

2. OPERATIONAL IMPACT

- 2.1 Due to the TWY A closure, aircraft requiring a full-length take-off for RWY 16 must enter RWY 16/34 via TWY C and backtrack RWY 16. Aircraft with a wingspan greater than 36M are not permitted to turnaround on RWY 16 and are required to use TWY B to turn around.
 - 2.1.1 Flight crew should expect delays for full-length take-off for RWY 16 departures due to the requirement to backtrack the runway.

- 2.2 Due to the TWY A closure, aircraft that pass TWY C during RWY 34 landing roll must back track via RWY 34. Aircraft with a wingspan greater than 36M are not permitted to turnaround on RWY 34 and are required to use TWY B to turnaround.
- 2.2.1 Flight crew should expect delays for RWY 34 arrivals that vacate at TWY B due to the requirement to backtrack the runway.
- 2.3 At all times during Stage 1 and Stage 2 of the works, TWY B will be unavailable in Low Visibility Operations.
- 2.4 At all times during Stage 1 and Stage 2 of the works, TWY B run-up bay will be unavailable for aircraft parking and engine ground runs.
- 2.5 Due to YMML Noise Abatement Procedures, any RWY 16 departures between 2300-0600 Local are to be conducted using the full runway length.
- 2.6 Any changes to these MOWP stages or operational restrictions will be communicated via NOTAM. This AIC will also be subject to amendment as required.

3. CANCELLATION

- 3.1 This AIC will be cancelled when the works are completed.

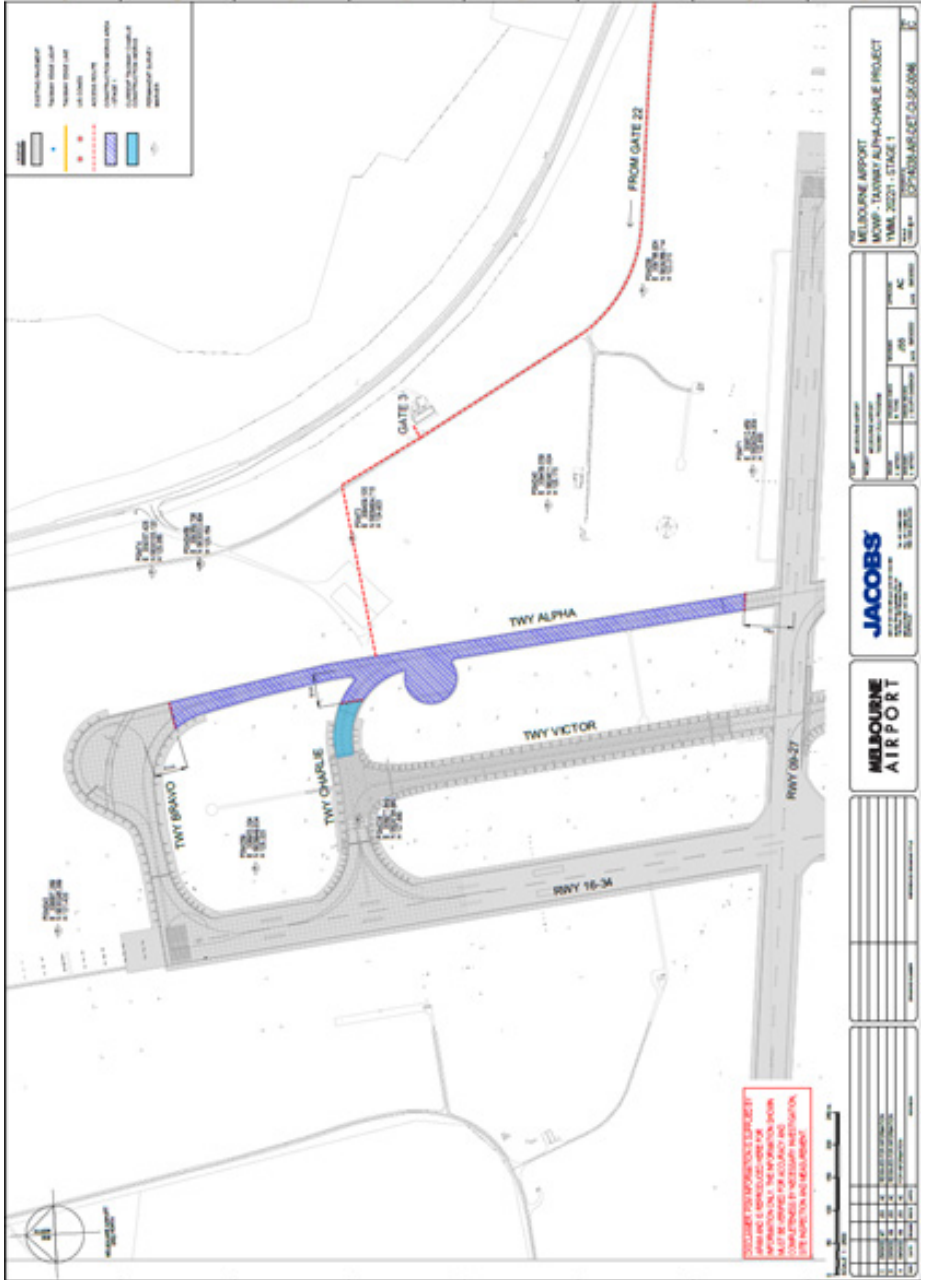
4. DISTRIBUTION

- 4.1 Airservices Australia website only.

Appendices

- 1. MOWP 2022/1 Stage 1 Works Area
- 2. MOWP 2022/1 Stage 2 Works Area

1. MOWP 2022/1 Stage 1 Works Area



2. MOWP 2022/1 Stage 2 Works Area

