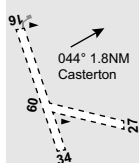


CASTERTON**ELEV 521****FULL NOTAM SERVICE NOT AVBL**

VIC
373648S 1412142E
AD OPR Glenelg Shire Council, PO Box 152, Portland, VIC, 3305. PH 03 5554 2444.
Mobile AH 0427 360 578.

UTC +10
VAR 10 DEG E
YCTN
UNCR

REMARKS

1. PPR.
2. Daylight OPS only.
3. Firebombing OPS during summer periods.

PHYSICAL CHARACTERISTICS

09/27 17c Unrated. Grass. RWY LEN 520M. WID 18
16/34 36c Unrated. Gravel. RWY LEN WID 18
1,100M.

ATS AND AERODROME COMMUNICATION FACILITIES

FIA MELBOURNE CENTRE 125.8

CTAF 126.7**ADDITIONAL INFORMATION**

1. Approaches RWY 16, 34 and 27 infringed by trees.
2. Kangaroo hazard exists.

CHARTS RELATED TO THE AERODROME

WAC 3469.