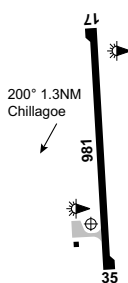


CHILLAGOE**ELEV 1123****AVFAX CODE 4512**

QLD 170827S 1443142E UTC +10 YCGO
 VAR 6 DEG E CERT
 AD OPR Mareeba Shire Council, PO Box 154, Mareeba, QLD, 4880. Email:
 aerodromes@msc.qld.gov.au. PH 1300 308 461. ARO 0417 774 633: LOCAL
 CTC/EMERG 0417 774 633. Fax 07 4092 5138.

REMARKS

AD Charges apply.

HANDLING SERVICES AND FACILITIES

BP - Phone 07 4094 7108. AVGAS.

PASSENGER FACILITIES

RF/WC

AERODROME OBSTACLES

- Hills to 1637FT, 130DEG MAG 1,000M FM THR RWY 35, infringes inner HZS
- Chimney stacks to 1,400FT, 245DEG MAG 740M FM THR RWY 35, infringes inner HZS
- Bocoonbeta Mt, 1,483FT, 310DEG MAG 2,000M FM THR RWY 17, infringes inner HZS

PHYSICAL CHARACTERISTICS

17/35 171 32 Unrated. Sealed WID 18 RWS 90
 Inner HZS infringed.

AERODROME AND APPROACH LIGHTING

RWY 17/35 LIRL AFRU+PAL 126.7 SDBY PWR AVBL
 RWY 17/35 PTBL(1) BY PRIOR
 ARRANGEMENT

- (1) EMERG only. 90MIN PN.
 RWY 17/35 edge light spacing: 90M.

OTHER LIGHTING

- Secondary PWR switchover time: 15SEC.
- TWY LGT: Blue edge.

ATS AND AERODROME COMMUNICATION FACILITIES

FIA BRISBANE CENTRE 120.15 Circuit area

CTAF - AFRU 126.7**ADDITIONAL INFORMATION**

Bird and animal hazard exists.

CHARTS RELATED TO THE AERODROME

- WAC 3219.
- Also refer to AIP Departure and Approach Procedures.