

**BROOME/INTL****ELEV 57****AVFAX CODE 6903**

WA

UTC +8

YBRM

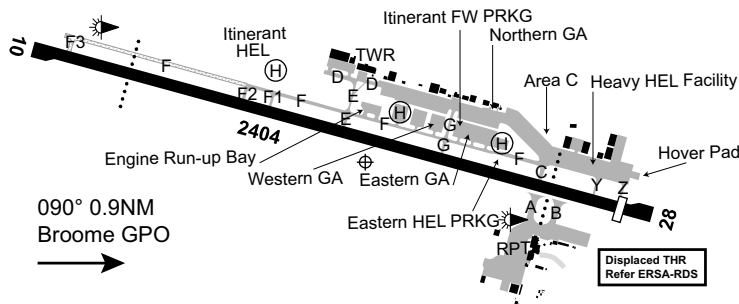
175658S

1221340E

VAR 2 DEG E

CERT

AD OPR Broome International Airport, Locked Bag 4016, Broome, WA, 6725. PH 08 9194 0600:  
Duty Groundsman 0437 900 566. PH AH Night Security 0438 921 699. Fax 9194 0610. Website:  
www.broomeair.com.au.

**REMARKS**

1. All International arrivals and departures must be notified to AD OPR prior to OPS. Refer to website.
2. AD charges to all ACFT. Check the BIA website for latest INFO for landing and parking fees.
3. BIA is a security controlled airport. All pilots are required to maintain the safety and security of their passenger's airside at all times.
4. The Southern RPT APN at BIA is a designated Airside Security Zone.
5. Southern APN by approval and RPT only.

**HANDLING SERVICES AND FACILITIES**

AIR BP: 2200-1000 UTC DLY, AH 1HR PN. Outside normal HR of operation fee applies.

Phone 0436 412 616. Radio 129.9. AVGAS, JET A1.

Viva Energy Aviation: Dunning's Fuels: 2100-1100 UTC MON-FRI, 2300-0900 UTC SAT, 2300-1100 UTC SUN. Phone 0439 078 085, AH 1HR PN (call out fee applies). JET A1 and JetPlus. Fuel2Sky Carnet Cards or credit cards (V and MC).

Ground handling AVBL on request only. Contact AD OPR.

**RESCUE AND FIREFIGHTING SERVICES**

1. CAT 6:
  - a. 2145-1115 UTC MON - FRI.
  - b. 2321-1115 UTC SAT.
  - c. 2245-1115 UTC SUN.
2. 131.0 MHz AVBL HO.
3. Water Rescue Service AVBL.

**APRONS AND TAXIWAYS**

TWY F3 and TWY F west of TWY F2, unsealed. Not AVBL November to May.

**AERODROME OBSTACLES**

1. Radio mast, unmarked and unlit 230FT AMSL, 1,760M BRG 200 DEG MAG from ARP. Infringes HZS by 43FT.
2. RWY 10 TKOF transient obstacle 2.92% truck on Highway, refer to Type A Chart March 2016.
3. RWY 28 approach obstacle 2.14% light pole, refer to Type A Chart March 2016.
4. CAUTION HELICOPTERS: multiple light poles 33FT AGL, 20M S Northern GA APN.

**METEOROLOGICAL INFORMATION PROVIDED**

- 1. TAF CAT A, METAR/SPECI.
- 2. AWIS Phone 08 6216 2603 - Report faults to BoM.
- 3. AWIS FREQ 126.55 (requires one one-second pulse to activate). AWIS will transmit for 90 SEC. Report faults to AD OPR.

**PHYSICAL CHARACTERISTICS**

10/28 104 79a PCN 47/F/B/1.50 MPa/T Grooved. WID 45 RWS 150

**AERODROME AND APPROACH LIGHTING**

RWY 10/28 MIRL(1) AFRU+PAL 126.0 SDBY PWR AVBL  
RWY 10/28 PAPI(2) AFRU+PAL 126.0 3.0 DEG54FT SDBY PWR AVBL  
(1) PAL AVBL outside TWR HR.  
(2) Double sided.  
RWY edge light spacing: 10/28: 60M.

**OTHER LIGHTING**

- 1. Secondary PWR switchover time: 15 SEC.
- 2. TWY LGT: Blue edge on A, B, C and E. All other TWY have reflectors.

**ATS AND AERODROME COMMUNICATION FACILITIES**

FIA BRISBANE CENTRE 123.95 On ground (Outside TWR HR)  
ATIS BROOME 128.2  
SMC BROOME GROUND 121.7  
TWR BROOME TOWER 126.0

- 1. TWR HRS:
  - a. SUN-FRI: 0000-1145 UTC
  - b. SAT: 0000-0945 UTCPhone 08 9192 7702^  
*Note: TWR HR may change at short notice, check status of airspace with ATS or Broome ATIS.*
- 2. Broome TWR provides combined TWR and APP CTL services within Class D and E airspace BLW 5,500FT AMSL DRG TWR HR. CTC TWR for clearance.
- 3. Outside TWR HR, Broome Class D and E airspace BLW 5,500FT AMSL becomes Class G.

**RADIO NAVIGATION AND LANDING AIDS**

DME BRM 115.3/100X 175648.5S 1221405.2E (1)  
NDB BRM 320 175646.7S 1221407.1E Range 60 (HN 60) OW 110 (OW HN110)

- (1) Antenna ELEV 43 FT.

**LOCAL TRAFFIC REGULATIONS**

- 1. Visiting pilots unfamiliar with Broome operations, or pilots wishing to conduct circuits/practice instrument approaches, are to contact BROOME TOWER on 08 9192 7702^.
- 2. Parking:
  - a. All GA parking on aprons to the N side of RWY VIA TWY C, E, F and G.
  - b. Visitor parking marked on pavement or by yellow cones.
  - c. 48 HR PN to AD OPR for non-Broome-based ACFT PRKG.
  - d. Gate 6 parking by arrangement only, 30MIN MAX parking time, must park in designated areas, wingspan restrictions apply.
  - e. Non scheduled Code C ACFT must park in Area C via TWY C.
- 3. Rotary wing arriving/departing Northern HEL Apron or Eastern GA Apron approach/depart via TWY F unless specifically advised otherwise by ATC. Minimum taxi speed in ground effect at all times.
- 4. All ACFT ABV 20,000KG, landing RWY 28 are to roll through to RWY end prior to executing 180DEG turn. Full length backtrack.
- 5. TWY C not AVBL to ACFT with a wingspan greater than 36M.
- 6. TWY D and northern GA APN not AVBL to ACFT with a wingspan greater than 20M.
- 7. TWY E and TWY G north of TWY F not AVBL to ACFT with a wingspan greater than 20M.
- 8. TWY Y, Z and heavy HEL APN for wheeled HEL only. No fixed wing permitted.
- 9. ACFT up to 24M wingspan, to use TWY F to minimise backtracking on RWY during busy periods.

10. GA ACFT to do intersection departures where operationally possible.
11. RWY 10 SOT at W turning node.
12. RWY 28 SOT at E turning node.
13. Gate 6 APN via TWY B only.
14. **Training Flights - All Aircraft**  
Circuit training is only to be conducted BTN 0900-2000 Local. All training flights to be conducted in compliance with Noise Abatement Procedures contained herein and the Broome International Airport "Fly Neighbourly Policy" - see website.
15. **Engine Ground Running - All Aircraft**  
Due to the proximity of the Broome Residential area, Engine Ground Running is to be conducted in the engine run-up bay at the corner of TWY E and F. All ground runs to be conducted only BTN 0530-2000 Local and within the confines of the engine run-up bay, helicopters not permitted in run-up bay, engine runs to be conducted in helicopter parking areas, unless otherwise approved by the Airport.
16. Departures prior to 0600 Local must have prior approval from the Airport.
17. Due to grades on RWY 10/28, opposite ends of the RWY are not visible when taking off. Mandatory CTAF BCST RQ BFR OPR on RWY.

## FLIGHT PROCEDURES

1. During TWR hours;  
Broome TWR Class E Airspace;  
a. Horizontal limits: A circle of 31NM centred on YBRM/DME, excluding the Class D Airspace.  
b. Vertical limits: 1,200FT AGL - BLW 5,500FT AMSL.
2. VFR aircraft are encouraged to CTC TWR with their intentions prior to entering and operating in Broome TWR Class E airspace.
3. VFR aircraft should maintain continuous two way communications whilst operating in Broome TWR Class E airspace.
4. For special procedures which apply to the Horizontal Falls, see *ERSA GEN - SPECIAL PROCEDURES*.

## CTAF - AFRU 126.0

## NOISE ABATEMENT PROCEDURES

1. Fly Neighbourly procedures are requested when operating piston engine and turboprop aircraft, including all helicopters, within the Broome environ, except in IMC, or when in VMC and stress of weather or traffic avoidance procedures require alternative action. These procedures do not apply to ultralight aircraft.
2. **Arrivals**  
**Piston Engine and Turboprop Aircraft**  
Runway 10 - aircraft are to be established on final while over water.  
Runway 28 - aircraft are to be established on final approach over water (Dampier Creek).  
**Twin Engine Helicopters**  
Runway 28 - aircraft are to conduct an oblique final approach north of the shopping centre for landing midway down the runway.  
Runway 10 - aircraft are to avoid built up areas and be established on final while over water.
3. **Departures**  
**Piston Engine and Turboprop Aircraft**  
Runway 10 - aircraft to climb on runway heading until over Dampier Creek.  
Right turns - not to be commenced below 1,500FT.  
Left turns - aircraft to remain clear of built up area before setting heading.  
Runway 28 - aircraft are to maintain heading until over water.  
Right turns - not to be commenced below 1,500FT.  
Left turns - aircraft to remain clear of built up area before setting heading.  
**Twin Engine Helicopters**  
Runway 10 - aircraft to pass north of shopping area and remain clear of built up area before setting heading.  
Runway 28 - aircraft to maintain take-off heading until established over water.  
Right turns - climb straight ahead to 1,500FT. Make right turn remaining just off the coast to 3NM. Make right turn to intercept the outbound bearing by 5NM.  
Left turns - aircraft to remain clear of built up area before setting heading.

---

**4. Circuit training - Piston Engine and Turboprop aircraft**

Left circuits. Circuits not permitted BTN 2000-0900 Local all aircraft.

**Twin Engine Helicopters**

- a. All circuits to south of the airport and avoid built up areas, circuits not permitted BTN 2000-0900 Local unless approved by the Airport.
- b. Night circuits - oblique departures and arrivals to runways 10 and 28 respectively.
- c. Night circuits and off shore night deck landings with late arrivals back into Broome not permitted Sunday and Monday nights, unless approved by the Airport.

**ADDITIONAL INFORMATION**

1. Bird and animal hazard exists. Flying fox (bat) activity on final APCH RWY 28 1HR prior to and after last light.
2. Blast embankment, 6FT AGL, 2,568M FM SOT RWY 10 and 230M short of THR RWY 28.
3. Weather balloon launch APRX 2315 UTC. Launches may occur at other times.

**CHARTS RELATED TO THE AERODROME**

1. WAC 3223.
  2. Aerodrome Obstacle Chart Type A: Edition I (March 2016).
  3. Also refer to AIP Departure and Approach Procedures.
-