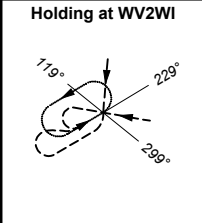
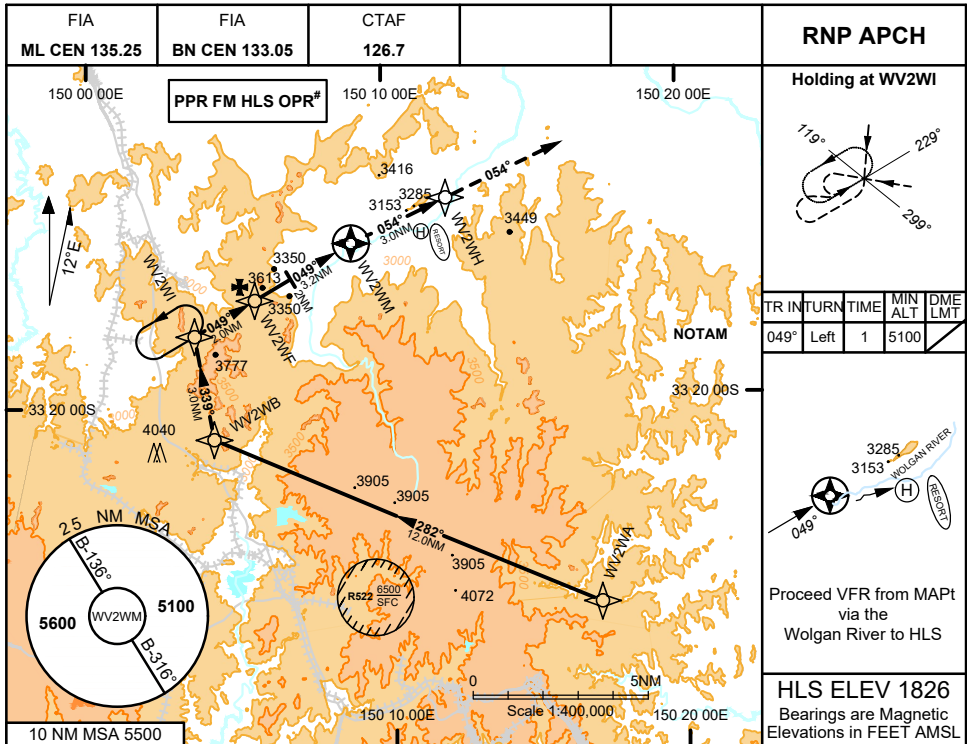
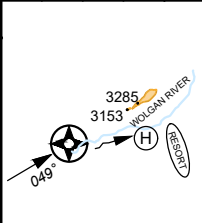


30 NOV 2023

WOLGAN VALLEY HELIPORT, NSW (YWVR)



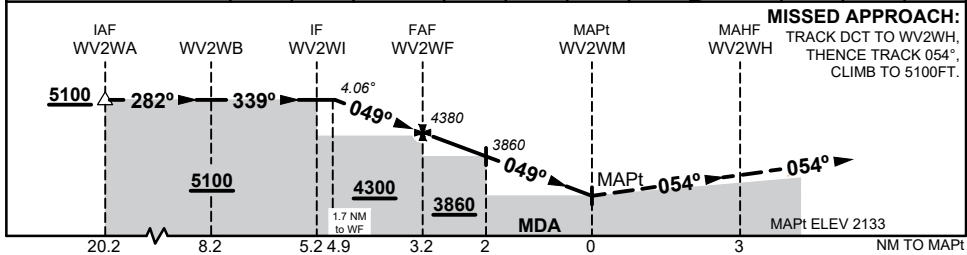
TR	INTURN	TIME	MIN ALT	DME LM
049°	Left	1	5100	



Proceed VFR from MAPt via the Wolgan River to HLS

HLS ELEV 1826
Bearings are Magnetic Elevations in FEET AMSL

NM TO NEXT WPT	1.7	1	3	2	1	0.2	WV2WM
ALT (4.06° APCH PATH)	5100	4810	4380	4290	3860	3430	3100



MISSED APPROACH:
TRACK DCT to WV2WH, THENCE TRACK 054°, CLIMB TO 5100FT.

NOTES

- MAX IAS:
INITIAL, INTERMEDIATE: 120KTS
HOLDING: 100KTS
FINAL & MISSED APP: 90KTS
- KEY LEAD-IN FEATURES:
WOLGAN VALLEY RIVER AND RESORT
- MDH BASED ON MAPt ELEV
- DAY ONLY
- SYDNEY HELITOURS PHONE: (02) 9317 3402

CATEGORY	H
LNAV (NON VAA, 4.2%)	3100 (967* - 5.0)
CIRCLING	NOT APPLICABLE
ALTERNATE	TAF NOT AVAILABLE

Changes: REMOVED D538A

WVRGN01-177

