

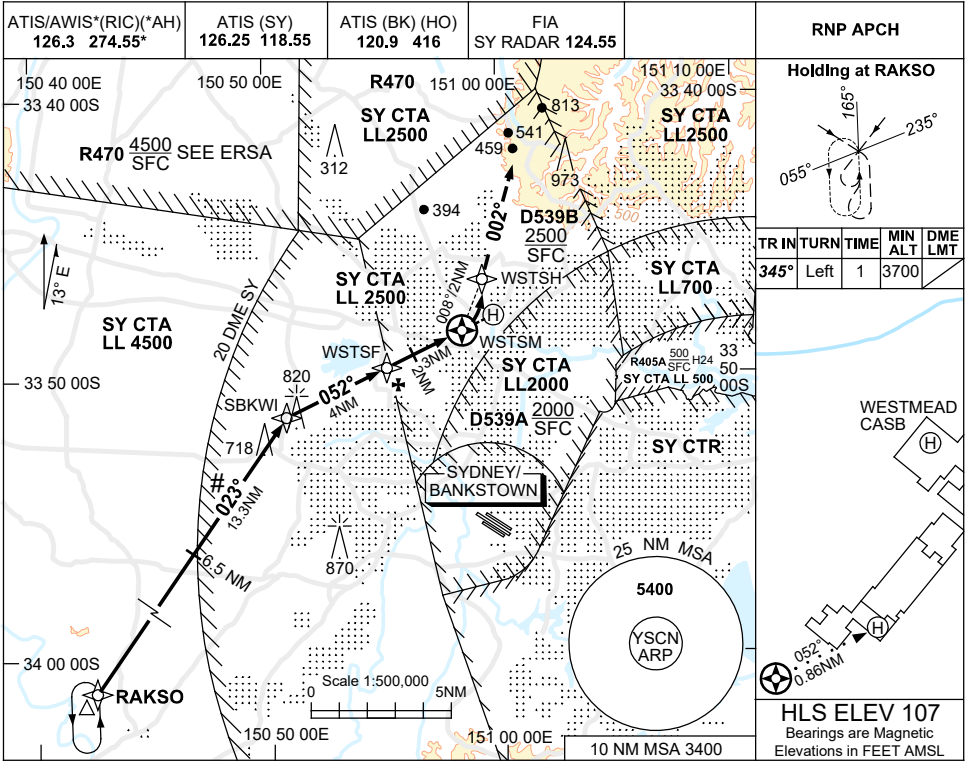
FOR CASA APPROVED OPERATORS ONLY

USE QNH

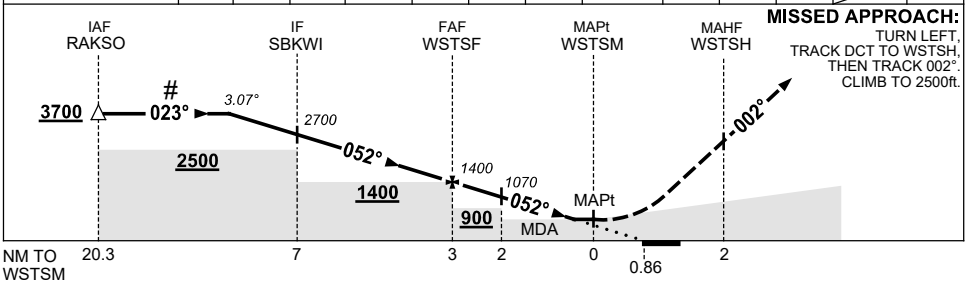
RNP 052

21 MAR 2024

WESTMEAD HOSPITAL, NSW (YWST)



NM TO NEXT WPT	3.1	2	1	SBKWI	3	2	1	WSTSF	2	1.2	0.9	WSTSM
ALT(3.07° APCH PATH)	3700	3360	3030	2700	2380	2050	1730	1400	1070	800	700	



NOTES

CATEGORY	H
LNAV (VAA) USING AREA QNH	800 (693-3.9)
LNAV (VAA) USING SY, RIC OR BK QNH	700 (593-3.4)
ALTERNATE	NOT APPLICABLE

- #1. INITIAL SEGMENT CO-INCIDENT WITH INITIAL SEGMENT FOR YSBK RNP RWY 11C PROC.
2. COLOUR: SEE SPEC NOTICES.
3. APCH CLR RQ FM SY ATS. ALL ACFT TRACK VIA RAKSO UNLESS ADVISED BY ATC.

Changes: R405A ADDED, Editorial.

WSTGN02-178

FOR CASA APPROVED OPERATORS ONLY