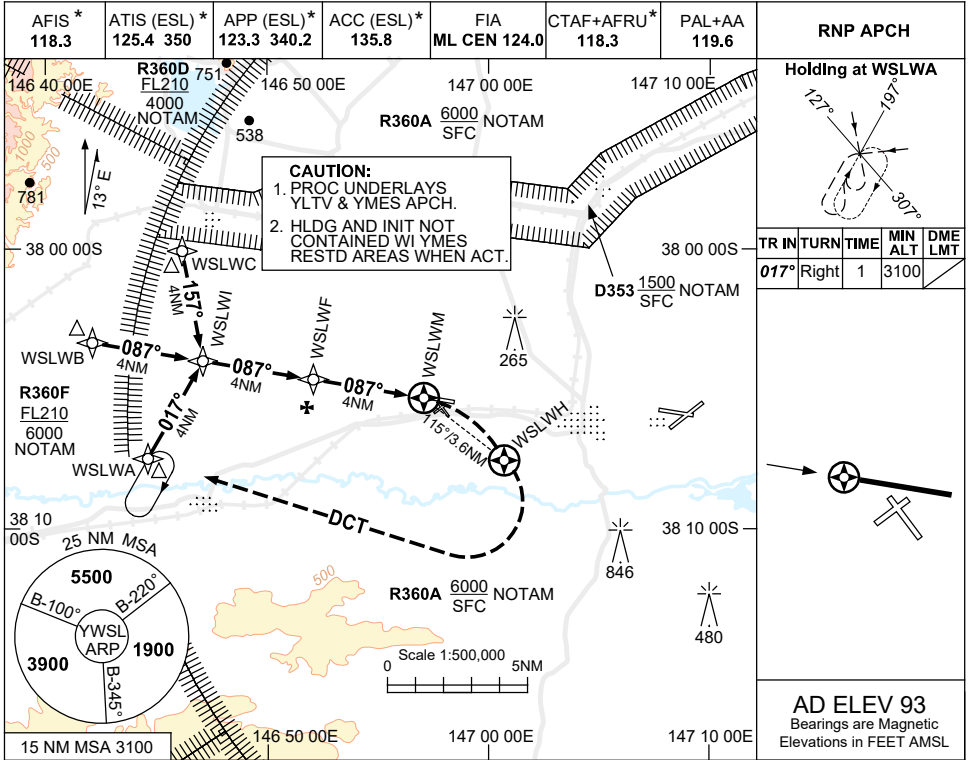


USE QNH

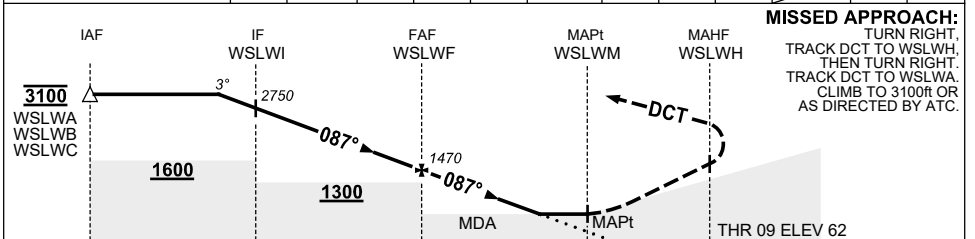
RNP RWY 09

30 NOV 2023

WEST SALE, VIC (YWSL)



NM TO NEXT WPT	1.1	WSLWI	3	2	1	WSLWF	3	2	1.5	WSLWM		
ALT (3° APCH PATH)	3100	2750	2430	2110	1790	1470	1150	830	690			



MISSED APPROACH:
TURN RIGHT, TRACK DCT TO WSLWH, THEN TURN RIGHT. TRACK DCT TO WSLWA. CLIMB TO 3100ft OR AS DIRECTED BY ATC.

NOTES

1. MAX IAS: HOLDING: 210KT. INITIAL : 200KT.
2. AWY CLR RQ DRG YMES ATS HR.
- *3. REFER TO ERSA FOR AVAILABILITY.
- ‡4. MDA MAY BE REDUCED BY 100ft USING YMES QNH.
5. COLOUR : SEE SPEC NOTICES.

CATEGORY	A	B	C	D
LNAV ‡	640 (578-3.3)			NOT APPLICABLE
CIRCLING ‡	870 (777-2.4)		870 (777-4.0)	
ALTERNATE	(1277-4.4)		(1277-6.0)	

Changes: R360A REPLACES R359A, R360D REPLACES R359D, R360F REPLACES R359G, Editorial. WSLGN01-177