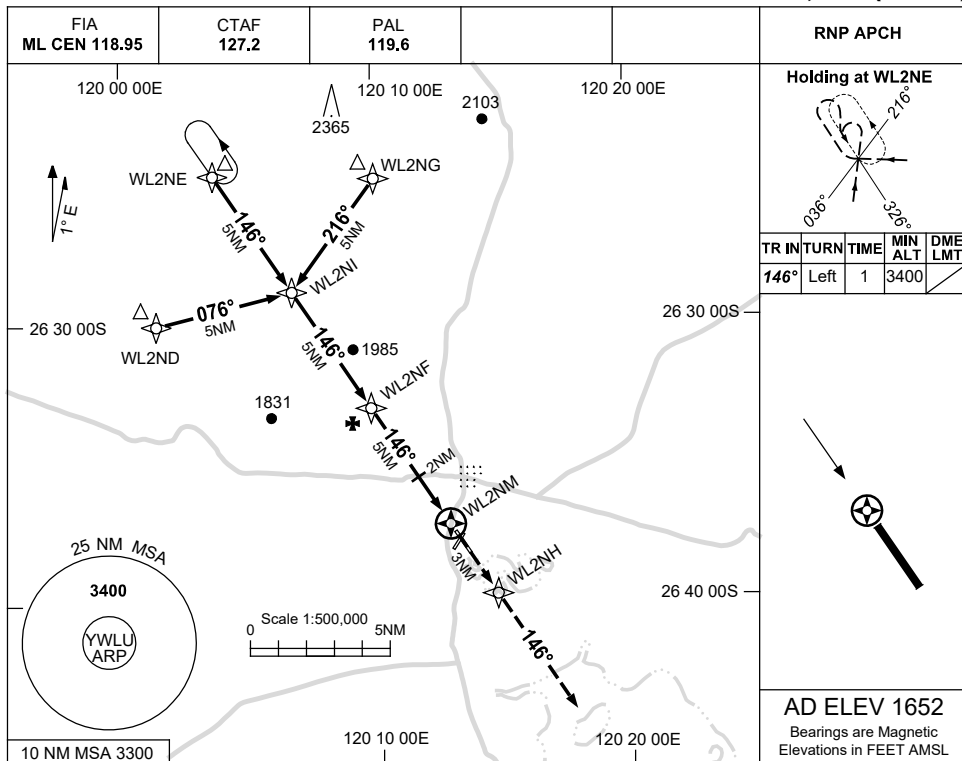


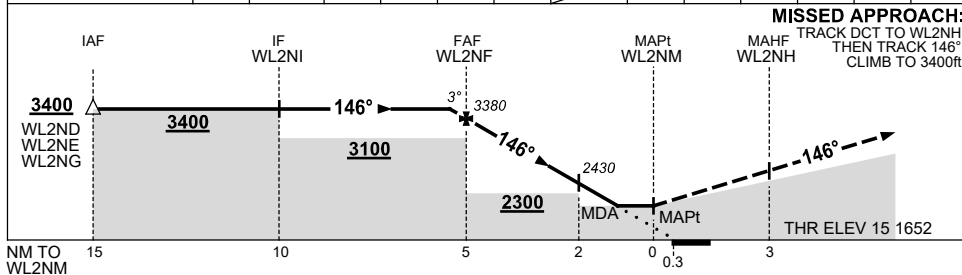
USE QNH

RNP RWY 15  
WILUNA, WA (YWLU)

21 MAR 2024



NM TO NEXT WPT	0.1	WL2NF	4	3	2	1.5	WL2NM						
ALT (3° APCH PATH)	3400	3380	3060	2740	2420	2250							



**MISSED APPROACH:**  
TRACK DCT TO WL2NH,  
THEN TRACK 146°.  
CLIMB TO 3400ft.

**NOTES**

CATEGORY	A	B	C	D
LNAV	2250 (598-3.4)			NOT APPLICABLE
CIRCLING	2290 (638-2.4)	2450 (798-4.0)		
ALTERNATE	(1138-4.4)		(1298-6.0)	

- MAX IAS:  
INITIAL : 210KT.  
HOLDING : 190KT.
- AWIS (PHONE):  
08 6216 2641

Changes: AD ELEV, THR ELEV, WPT NAMING CONVENTION, Editorial.

WLUGN01-178