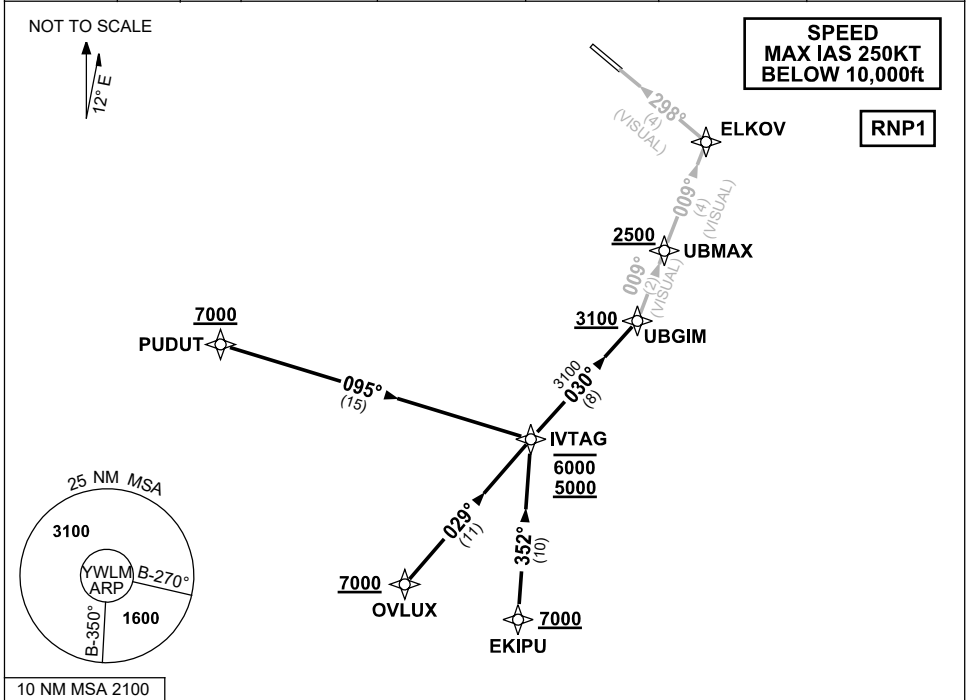


**STANDARD ARRIVAL ROUTE (STAR)
 IVTAG ONE VICTOR (RNAV) RWY 30
 WILLIAMTOWN, NSW (YWLM)**

30 NOV 2023

ATIS 134.45 316.1 365	ACD 130.35	SMC 121.8	TWR 118.3 280.9 243.0	APP H 133.3 261.4 L 135.7 293.4	FIA (AH) BN CEN 125.7	CTAF+AFRU (AH) AFRU+PAL (AH) 118.3	BRG are MAG ELEV in FEET AMSL
-----------------------------	---------------	--------------	-----------------------------	---------------------------------------	--------------------------	--	----------------------------------



10 NM MSA 2100

- TRANSITIONS:**
- PUDUT:** FROM PUDUT TO IVTAG
 - AT OR ABOVE 7000ft.
 - Track 095° to IVTAG
 - **Cross** IVTAG BTN 5000ft and 6000ft
 - OVLUX:** FROM OVLUX TO IVTAG
 - AT OR ABOVE 7000ft.
 - Track 029° to IVTAG
 - **Cross** IVTAG BTN 5000ft and 6000ft
 - EKIPU:** FROM EKIPU TO IVTAG
 - AT OR ABOVE 7000ft.
 - Track 352° to IVTAG
 - **Cross** IVTAG BTN 5000ft and 6000ft
- THEN FOLLOW ARRIVAL INSTRUCTION**
- ARRIVAL: IVTAG ONE VICTOR RWY 30**
- From IVTAG BTN 5000ft and 6000ft
 - Track 030° to UBGIM
 - **Cross** UBGIM AT or ABV 3100ft
 - Turn LEFT, track 009° VISUAL to UBMAX
 - **Cross** UBMAX AT or ABV 2500ft
 - Track 009° to ELKOV for 4NM VISUAL final.

COMMUNICATIONS FAILURE: PROCEDURE IN IMC

- Squawk 7600, comply with vertical navigation requirements, but not below MSA.
- Track via the latest STAR clearance to the nominated runway, then fly the most suitable approach in accordance with ERS A EMERG Section 1.5.