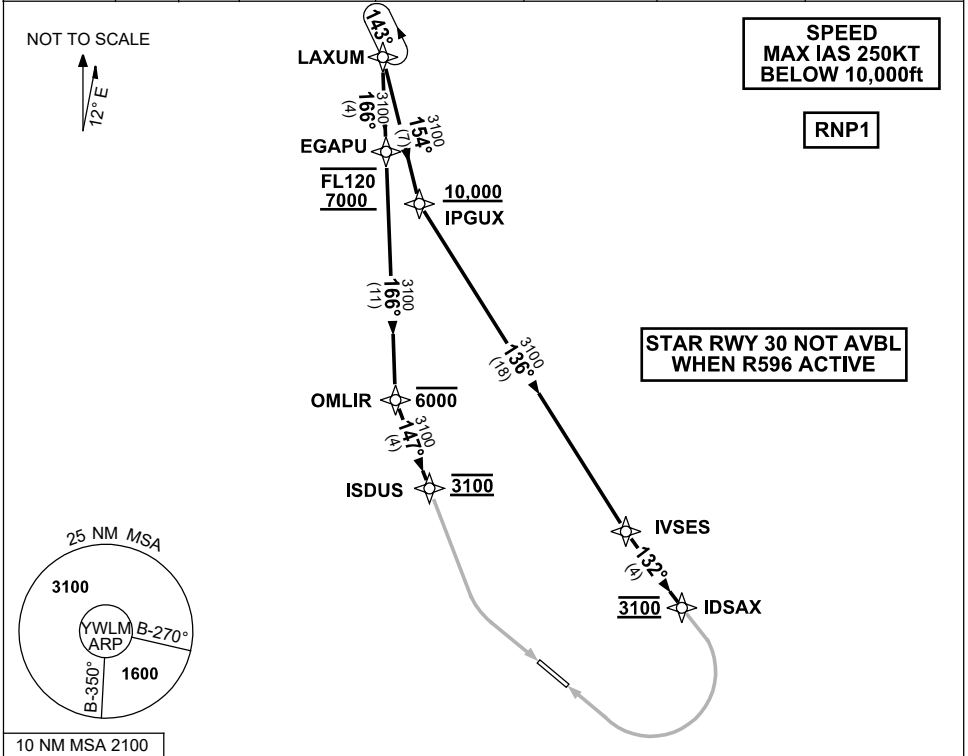


**STANDARD ARRIVAL ROUTE (STAR)
LAXUM ONE ROMEO ARRIVAL (RNAV) RWY 12/30
WILLIAMTOWN, NSW (YWLM)**

30 NOV 2023

ATIS 134.45 316.1 365	ACD 130.35	SMC 121.8	TWR 118.3 280.9 243.0	APP H 133.3 261.4 L 135.7 293.4	FIA (AH) BN CEN 125.7	CTAF+AFRU (AH) AFRU+PAL (AH) 118.3	BRG are MAG ELEV in FEET AMSL
-----------------------------	---------------	--------------	-----------------------------	---------------------------------------	--------------------------	--	----------------------------------



ARRIVAL: LAXUM ONE ROMEO

RWY 12:

- From LAXUM track 166° to EGAPU
Cross EGAPU BTN 7000ft and FL120
- Track 166° to OMLIR
Cross OMLIR AT or BLW 6000ft
- Turn LEFT, track 147° to ISDUS
Cross ISDUS AT 3100ft
- Track via RNP X RWY 12 (AR)

RWY 30:

- From LAXUM track 154° to IPGUX
Cross IPGUX AT or ABV 10,000ft
- Turn LEFT, track 136° to IVSES
- Turn LEFT, track 132° to IDSAX
Cross IDSAX AT 3100ft
- Track via RNP X RWY 30 (AR)

COMMUNICATIONS FAILURE: PROCEDURE IN IMC

- Squawk 7600, comply with vertical navigation requirements, but not below MSA.
- Track via the latest STAR clearance to the nominated runway, then fly the most suitable approach in accordance with ERS A EMERG Section 1.5.