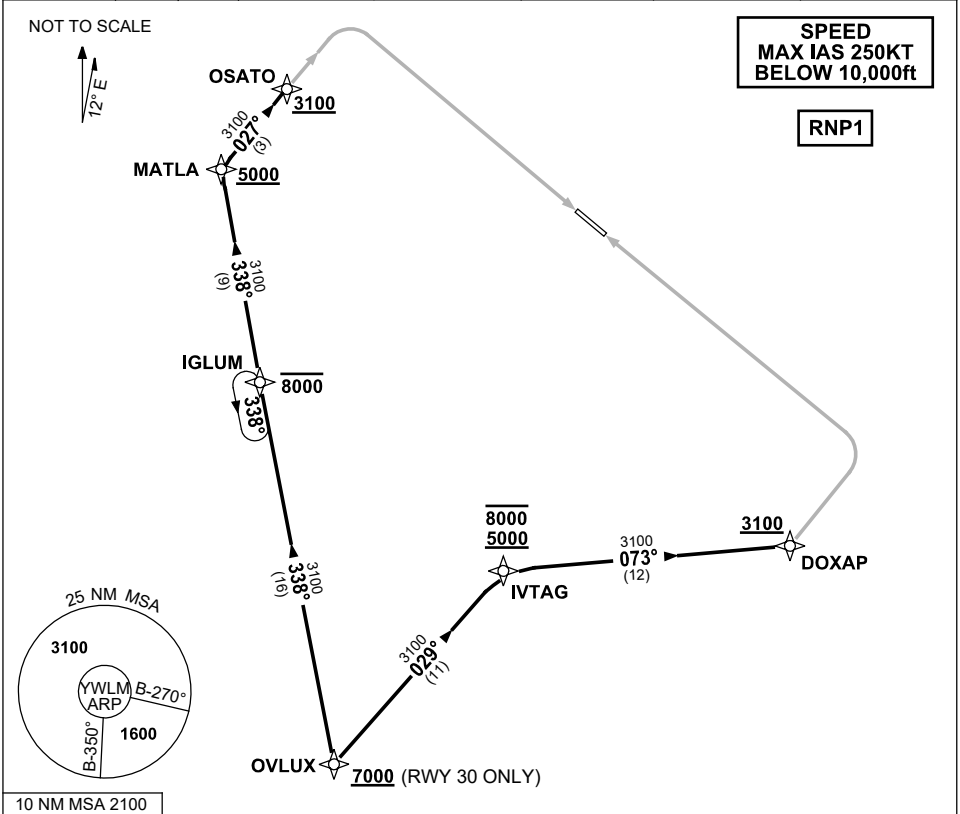


**STANDARD ARRIVAL ROUTE (STAR)
OVLUX ONE ARRIVAL (RNAV) RWY 12/30
WILLIAMTOWN, NSW (YWLM)**

30 NOV 2023

| | | | | | | | |
|-----------------------------|---------------|--------------|-----------------------------|---------------------------------------|--------------------------|--|----------------------------------|
| ATIS 134.45 316.1 365 | ACD 130.35 | SMC 121.8 | TWR 118.3 280.9 243.0 | APP H 133.3 261.4 L 135.7 293.4 | FIA (AH) BN CEN 125.7 | CTAF+AFRU (AH) AFRU+PAL (AH) 118.3 | BRG are MAG ELEV in FEET AMSL |
|-----------------------------|---------------|--------------|-----------------------------|---------------------------------------|--------------------------|--|----------------------------------|



ARRIVAL: OVLUX ONE

RWY 12:

- From OVLUX track 338° to IGLUM
Cross IGLUM AT or BLW 8000ft
- Track 338° to MATLA
Cross MATLA AT or ABV 5000ft
- Turn RIGHT, track 027° to OSATO
Cross OSATO AT or ABV 3100ft
- Track via ILS Z RWY 12 or
RNP Z RWY 12 or LOC Z RWY 12

RWY 30:

- From OVLUX AT or ABV 7000ft
- Track 029° to IVTAG
Cross IVTAG BTN 5000ft and 8000ft
- Turn RIGHT, track 073° to DOXAP
Cross DOXAP AT or ABV 3100ft
- Track via RNP Z RWY 30

COMMUNICATIONS FAILURE: PROCEDURE IN IMC

- Squawk 7600, comply with vertical navigation requirements, but not below MSA.
- Track via the latest STAR clearance to the nominated runway, then fly the most suitable approach in accordance with ERS A EMERG Section 1.5.

Changes: NEW PROC.

WLMSR05-177