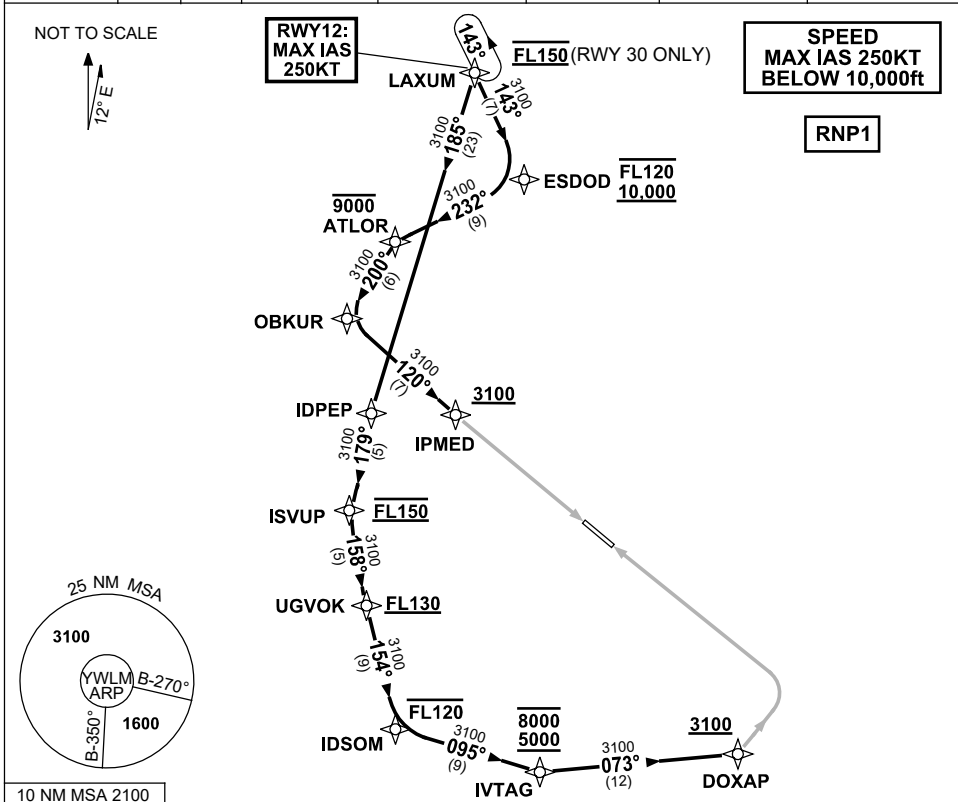


**STANDARD ARRIVAL ROUTE (STAR)
LAXUM ONE BRAVO ARRIVAL (RNAV) RWY 12/30
WILLIAMTOWN, NSW (YWLM)**

30 NOV 2023

ATIS 134.45 316.1 365	ACD 130.35	SMC 121.8	TWR 118.3 280.9 243.0	APP H 133.3 261.4 L 135.7 293.4	FIA (AH) BN CEN 125.7	CTAF+AFRU (AH) AFRU+PAL (AH) 118.3	BRG are MAG ELEV in FEET AMSL
-----------------------------	---------------	--------------	-----------------------------	---------------------------------------	--------------------------	------------------------------------------	----------------------------------



ARRIVAL: LAXUM ONE BRAVO

RWY 12:

- MAX IAS 250KT from LAXUM
- From LAXUM track 143° to ESDOD
 Cross ESDOD BTN 10,000ft and FL120
- Turn RIGHT, track 232° to ATLOR
 Cross ATLOR AT or BLW 9000ft
- Turn LEFT, track 200° to OBKUR
- Turn LEFT, track 120° to IPMED
 Cross IPMED AT or ABV 3100ft
- Track via ILS Z RWY 12 or
 RNP Z RWY 12 or LOC Z RWY 12

RWY 30:

- From LAXUM AT FL150, track 185° to IDPEP
- Turn LEFT, track 179° to ISVUP
 Cross ISVUP AT FL150
- Turn LEFT, track 158° to UGVOK
 Cross UGVOK AT or ABV FL130
- Turn LEFT, track 154° to IDSOM
 Cross IDSOM AT or BLW FL120
- Turn LEFT, track 095° to IVTAG
 Cross IVTAG BTN 5000ft and 8000ft
- Turn LEFT, track 073° to DOXAP
 Cross DOXAP AT or ABV 3100ft
- Track via RNP Z RWY 30

COMMUNICATIONS FAILURE: PROCEDURE IN IMC

- Squawk 7600, comply with vertical navigation requirements, but not below MSA.
- Track via the latest STAR clearance to the nominated runway, then fly the most suitable approach in accordance with ERSA EMERG Section 1.5.

Changes: NEW PROC.

WLMSR04-177