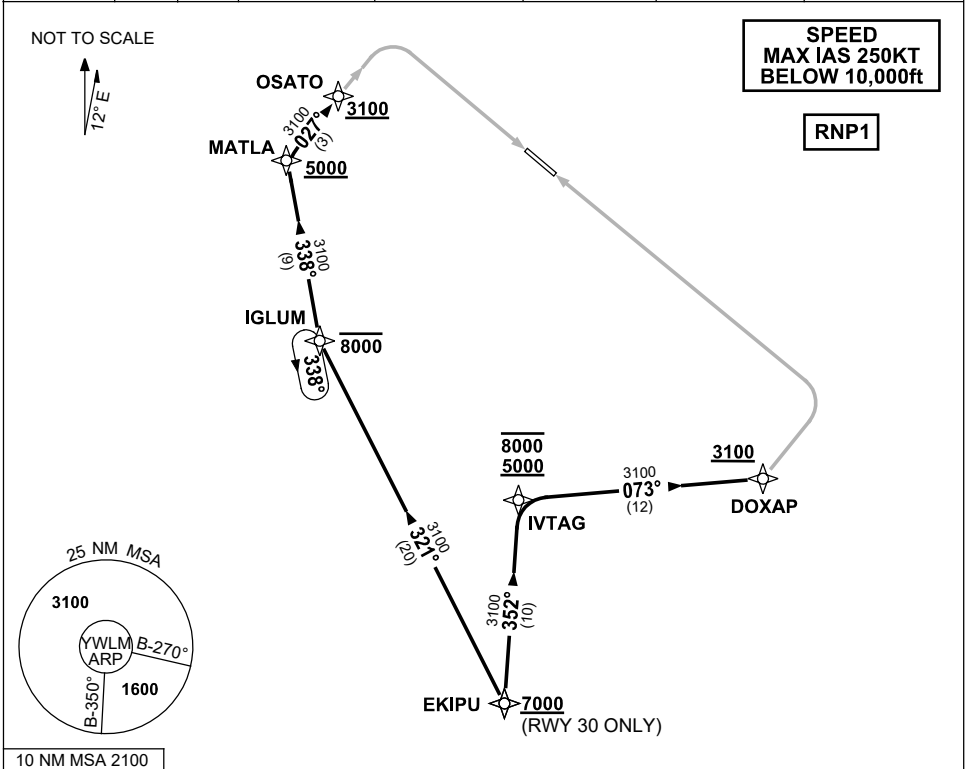


**STANDARD ARRIVAL ROUTE (STAR)
EKIPU ONE ARRIVAL (RNAV) RWY 12/30
WILLIAMTOWN, NSW (YWLM)**

30 NOV 2023

ATIS 134.45 316.1 365	ACD 130.35	SMC 121.8	TWR 118.3 280.9 243.0	APP H 133.3 261.4 L 135.7 293.4	FIA (AH) BN CEN 125.7	CTAF+AFRU (AH) AFRU+PAL (AH) 118.3	BRG are MAG ELEV in FEET AMSL
-----------------------------	---------------	--------------	-----------------------------	---------------------------------------	--------------------------	--	----------------------------------



ARRIVAL: EKIPU ONE

- | | |
|---|---|
| <p>RWY 12:</p> <ul style="list-style-type: none"> • From EKIPIU track 321° to IGLUM
Cross IGLUM AT or BLW 8000ft • Turn RIGHT, track 338° to MATLA
Cross MATLA AT or ABV 5000ft • Turn RIGHT, track 027° to OSATO
Cross OSATO AT or ABV 3100ft • Track via ILS Z RWY 12 or
RNP Z RWY 12 or LOC Z RWY 12 | <p>RWY 30:</p> <ul style="list-style-type: none"> • From EKIPIU AT or ABV 7000ft • Track 352° to IVTAG
Cross IVTAG BTN 5000ft and 8000ft • Turn RIGHT, track 073° to DOXAP
Cross DOXAP AT or ABV 3100ft • Track via RNP Z RWY 30 |
|---|---|

COMMUNICATIONS FAILURE: PROCEDURE IN IMC

- Squawk 7600, comply with vertical navigation requirements, but not below MSA.
- Track via the latest STAR clearance to the nominated runway, then fly the most suitable approach in accordance with ERSA EMERG Section 1.5.

Changes: NEW PROC.

WLMSR02-177