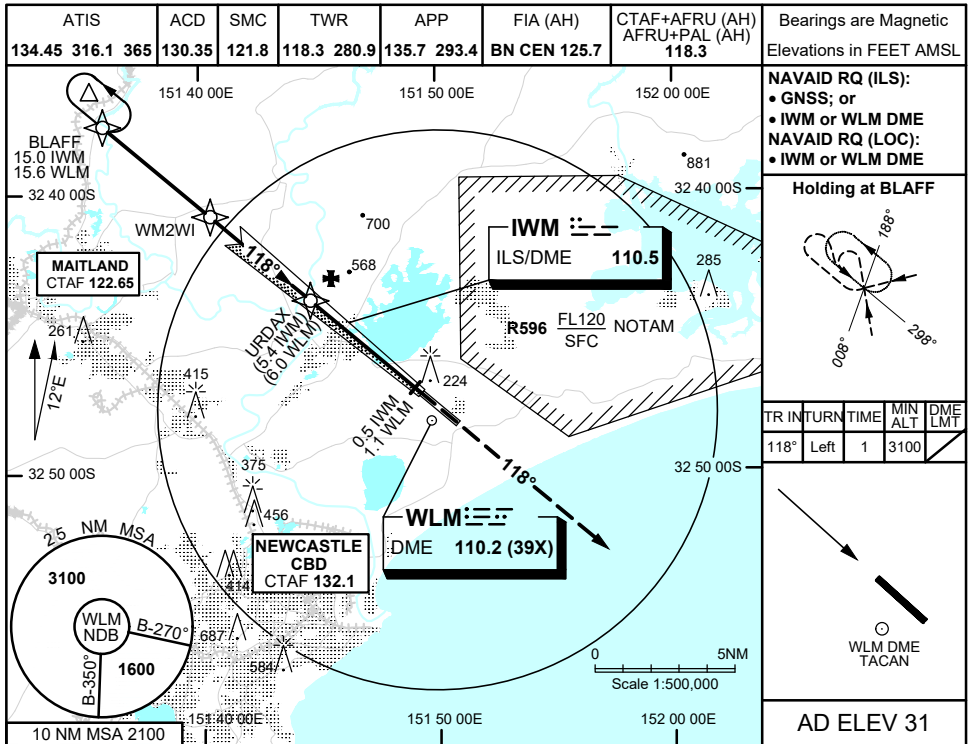
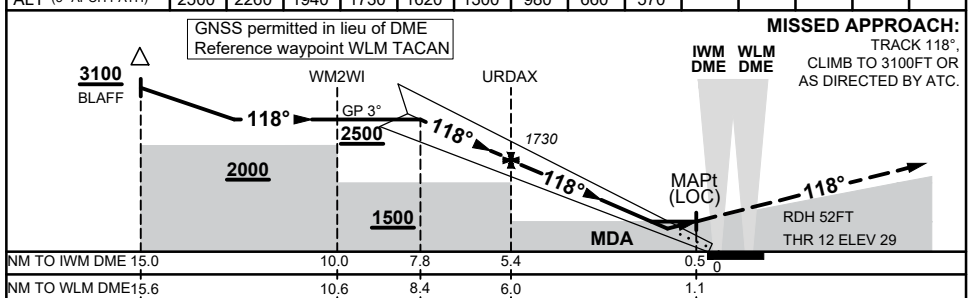


1 DEC 2022



NM TO IWM DME	7.8	7	6	5.4	5	4	3	2	1.7				
NM TO WLM DME	8.4	7.6	6.6	6	5.6	4.6	3.6	2.6	2.3				
ALT (3° APCH PATH)	2500	2260	1940	1730	1620	1300	980	660	570				



CATEGORY	A	B	C	D
S-I ILS	329 (300 - 1.2) (VIS 0.8 WITH ACTUAL QNH)			
S-I LOC	570 (539 - 2.2)			
CIRCLING	660 (629 - 2.4)	760 (729 - 4.0)		1060 (1029 - 5.0)
ALTERNATE	(1129 - 4.4)		(1229 - 6.0)	
			(1529 - 7.0)	

**NOTES**  
1. ACFT MAY BE RADAR VECTORED TO FINAL APCH.

Changes: WLM DME FREQ

WLMII01-173

