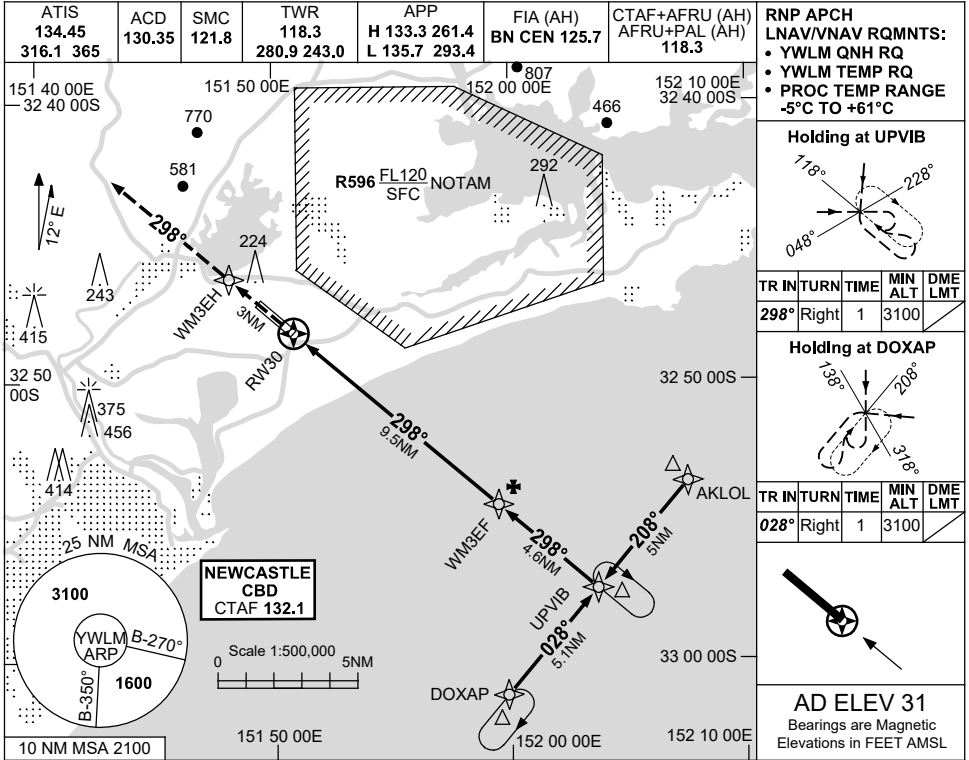


USE QNH

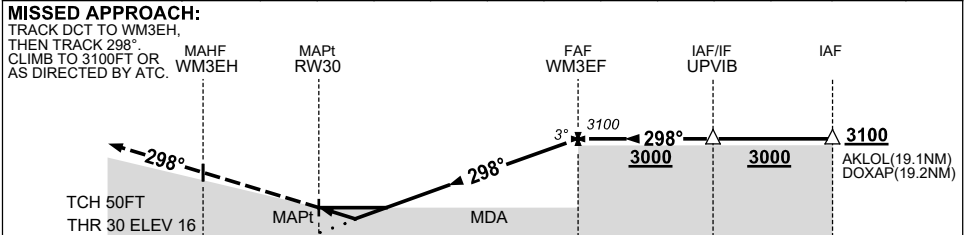
RNP Z RWY 30

WILLIAMTOWN, NSW (YWLM)

30 NOV 2023



NM TO NEXT WPT	RW30	1.1	1.7	2	3	4	5	6	7	8	9	WM3EF
ALT (3° APCH PATH)		410	600	700	1020	1340	1660	1980	2300	2610	2930	3100



NOTES

1. MAX IAS:
INITIAL : 230KT.

CATEGORY	A	B	C	D
LNAV/VNAV		410 (394-1.3)		
LNAV		600 (584-2.4)		
CIRCLING	710 (679-2.4)		810 (779-4.0)	1070 (1039-5.0)
ALTERNATE	(1179-4.4)		(1279-6.0)	(1539-7.0)

Changes: NEW PROC.

WLMGN06-177