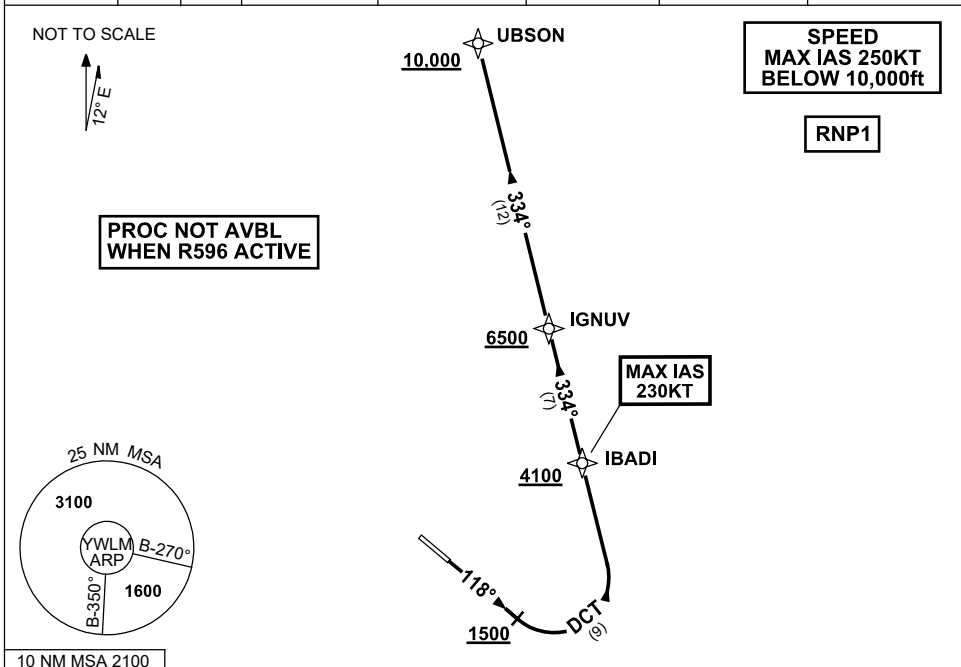


**STANDARD INSTRUMENT DEPARTURES (SID)
UBSON ONE ALPHA DEPARTURE (RNAV) RWY 12
WILLIAMTOWN, NSW (YWLM)**

30 NOV 2023

ATIS 134.45 316.1 365	ACD 130.35	SMC 121.8	TWR 118.3 280.9 243.0	APP H 133.3 261.4 L 135.7 293.4	FIA (AH) BN CEN 125.7	CTAF+AFRU (AH) AFRU+PAL (AH) 118.3	BRG are MAG ELEV in FEET AMSL
-----------------------------	---------------	--------------	-----------------------------	---------------------------------------	--------------------------	--	----------------------------------



UBSON ONE ALPHA DEPARTURE

- RWY 12**
GRAD 3.3%
MAX IAS 230KT until IBADI
- Track 118°
 - AT or ABV 1500ft, turn LEFT
 - Track DCT to IBADI
 - **Cross** IBADI AT or ABV 4100ft
 - Track 334° to IGNUV
 - **Cross** IGNUV AT or ABV 6500ft (RQ GRAD TO IGNUV: 5.5%)
 - Track 334° to UBSON
 - **Cross** UBSON AT or ABV 10,000ft

COMMUNICATIONS FAILURE PROCEDURE

- On recognition of communication failure:
- Squawk 7600
 - Maintain last assigned vector for two minutes and, if necessary, climb to minimum safe altitude to maintain terrain clearance, then
 - Proceed in accordance with the latest ATC route clearance acknowledged

Changes: NEW PROC.

WLMDB10-177

