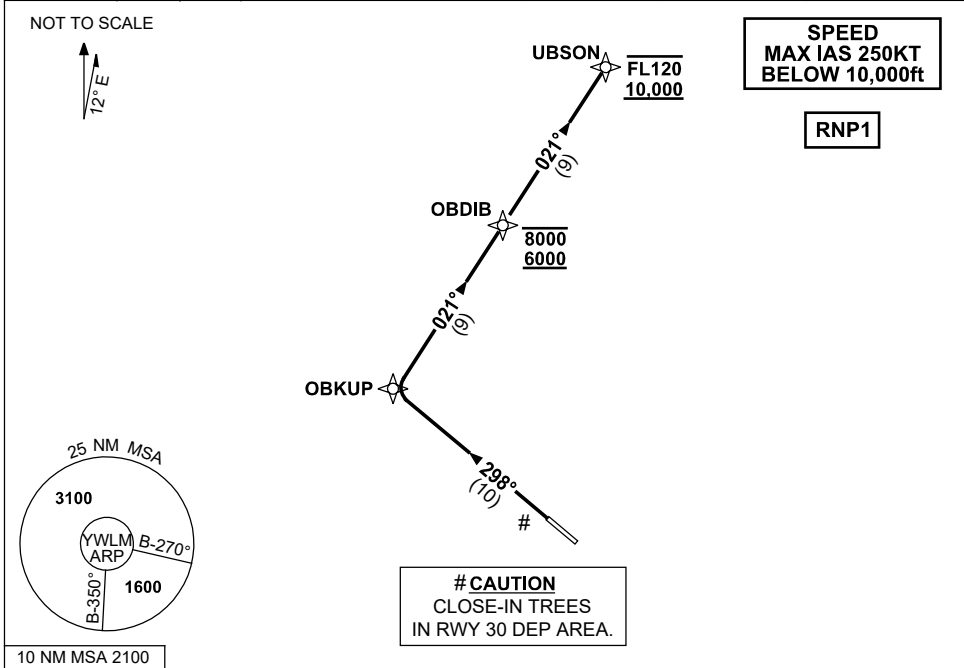


**STANDARD INSTRUMENT DEPARTURES (SID)  
UBSON ONE ALPHA DEPARTURE (RNAV) RWY 30  
WILLIAMTOWN, NSW (YWLM)**

**30 NOV 2023**

ATIS 134.45 316.1 365	ACD 130.35	SMC 121.8	TWR 118.3 280.9 243.0	APP H 133.3 261.4 L 135.7 293.4	FIA (AH) BN CEN 125.7	CTAF+AFRU (AH) AFRU+PAL (AH) 118.3	BRG are MAG ELEV in FEET AMSL
-----------------------------	---------------	--------------	-----------------------------	---------------------------------------	--------------------------	--	----------------------------------



**UBSON ONE ALPHA DEPARTURE**

**RWY 30**

- GRAD 3.3%
- Track 298° to OBKUP
- Turn RIGHT, track 021° to OBDIB  
**Cross** OBDIB BTN 6000ft AND 8000ft
- Track 021° to UBSON  
**Cross** UBSON BTN 10,000ft and FL120  
(RQ GRAD TO UBSON: 6.1%)

**COMMUNICATIONS FAILURE PROCEDURE**

On recognition of communication failure:

- Squawk 7600
- Maintain last assigned vector for two minutes and, if necessary, climb to minimum safe altitude to maintain terrain clearance, then
- Proceed in accordance with the latest ATC route clearance acknowledged

Changes: NEW PROC.

WLM DP09-177