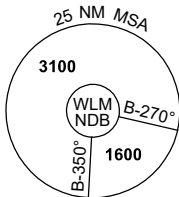
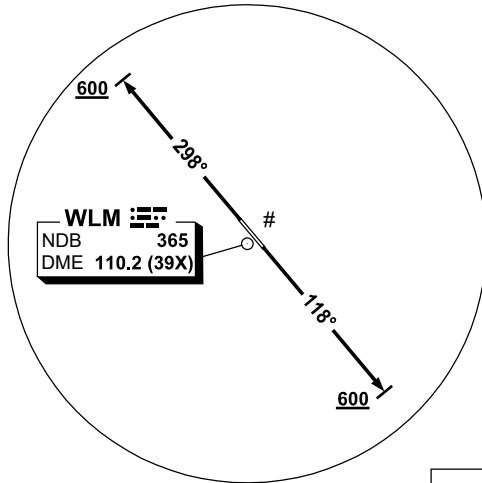


**STANDARD INSTRUMENT DEPARTURES (SID)
WILLY FOUR DEPARTURE (RADAR)
WILLIAMTOWN, NSW (YWLM)**

30 NOV 2023

ATIS 134.45 316.1 365	ACD 130.35	SMC 121.8	TWR 118.3 280.9 243.0	APP H 133.3 261.4 L 135.7 293.4	FIA (AH) BN CEN 125.7	CTAF+AFRU (AH) AFRU+PAL (AH) 118.3	BRG are MAG ELEV in FEET AMSL
-----------------------------	---------------	--------------	-----------------------------	---------------------------------------	--------------------------	--	----------------------------------

NOT TO SCALE



CAUTION
CLOSE-IN TREES
IN RWY 30 DEP AREA.

10 NM MSA 2100

WILLY FOUR DEPARTURE (RADAR)

RWY 12

- GRAD 3.3%
- Track 118°
- AT or ABV 600ft, but not before DER, turn to assigned heading or track.

RWY 30

- GRAD 3.3%
- Track 298°
- AT or ABV 600ft, but not before DER, turn to assigned heading or track.

COMMUNICATIONS FAILURE PROCEDURE

On recognition of communication failure:

- Squawk 7600
- Maintain last assigned vector for two minutes and, if necessary, climb to minimum safe altitude to maintain terrain clearance, then
- Proceed in accordance with the latest ATC route clearance acknowledged

Changes: CAUTION NOTE, APP FREQ, Editorial.

WLMDFP01-177