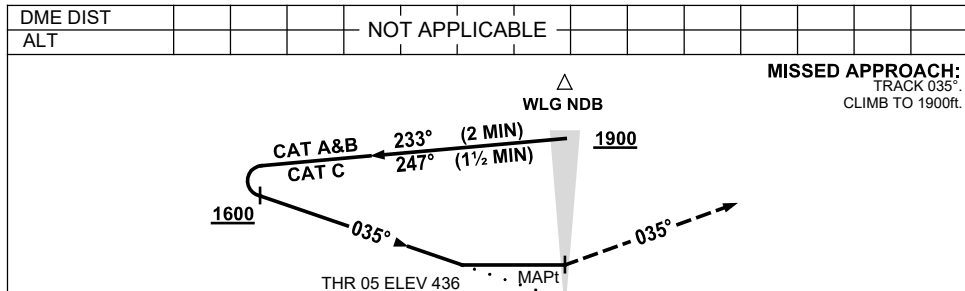
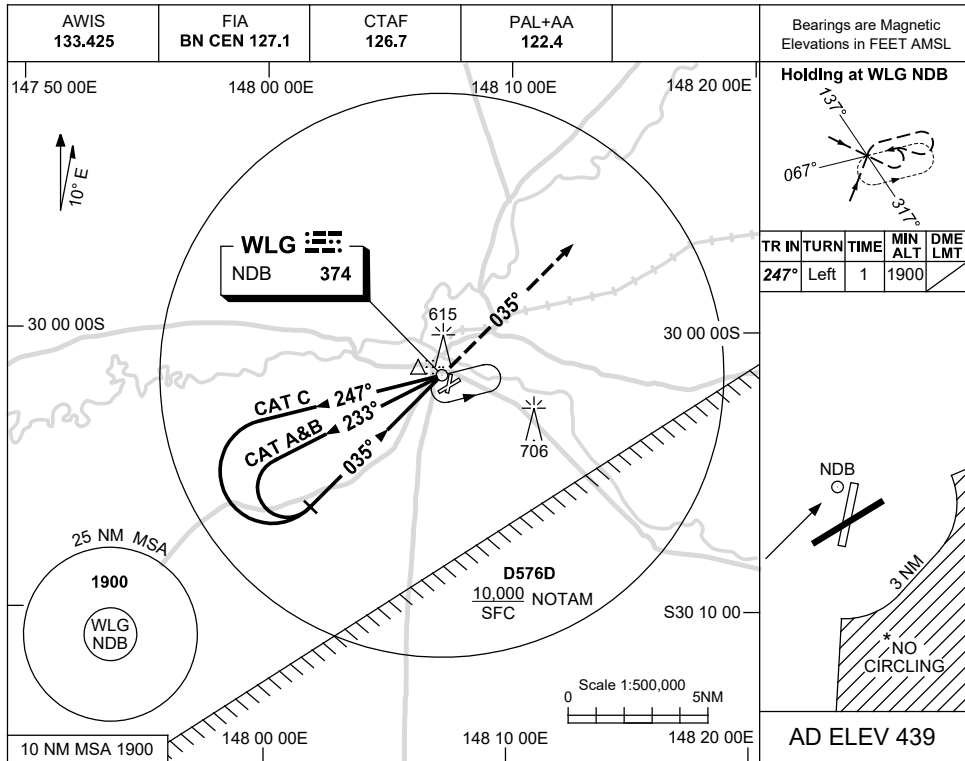


21 MAR 2024

USE QNH

NDB RWY 05  
**WALGETT, NSW (YWLG)**



**NOTES**

CATEGORY	A	B	C	D
S-I NDB	1010 (571-3.2)			NOT APPLICABLE
CIRCLING *	1040 (601-2.4)	1130 (691-4.0)		
ALTERNATE	(1101-4.4)	(1191-6.0)		

- 1. MAX IAS:  
INITIAL : 210KT.
- \* 2. NO CIRCLING IN SECTOR SOUTH-EAST OR RWY 23 & RWY 36 BEYOND 3 NM.

Changes: D576D ADDED, Editorial.

WLGNB01-178