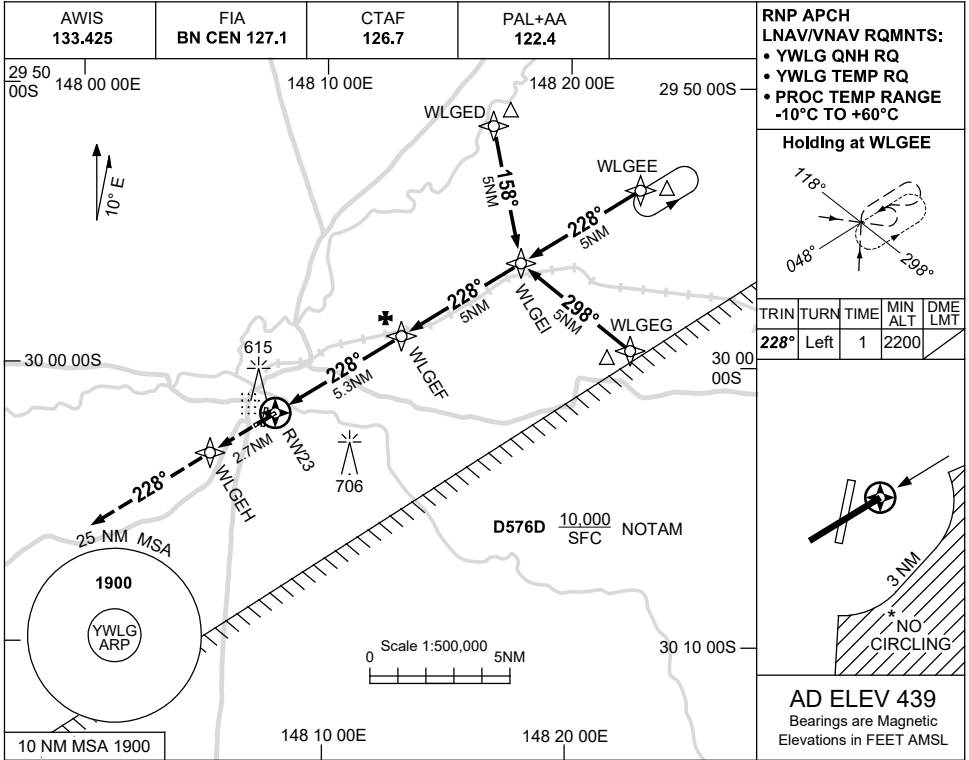


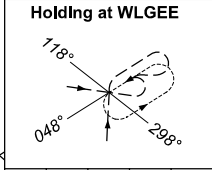
USE QNH

RNP RWY 23  
**WALGETT, NSW (YWLG)**

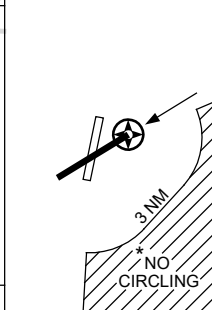
21 MAR 2024



RNP APCH  
 LNAV/VNAV RQMNTS:  
 • YWLG QNH RQ  
 • YWLG TEMP RQ  
 • PROC TEMP RANGE  
 -10°C TO +60°C

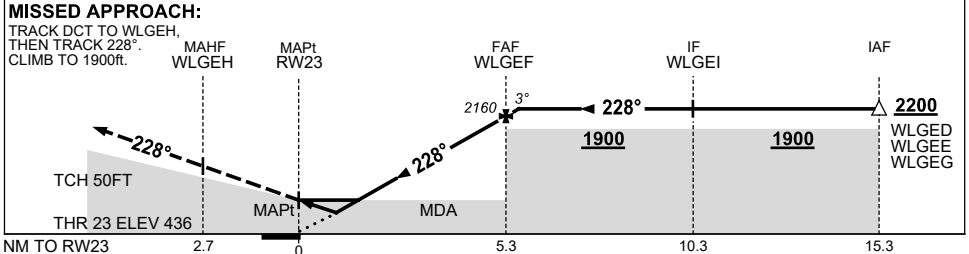


TRIN	TURN	TIME	MIN ALT	DME LMT
228°	Left	1	2200	



**AD ELEV 439**  
 Bearings are Magnetic  
 Elevations in FEET AMSL

NM TO NEXT WPT	RW23	0.8	1	1.4	2	3	4	5	WLGEF	0.1			
ALT (3° APCH PATH)		750	800	940	1120	1440	1760	2080	2160	2200			



CATEGORY	A	B	C	D
LNAV/VNAV		750 (314-1.7)		NOT APPLICABLE
LNAV		940 (501-2.8)		
CIRCLING*	1040 (601-2.4)		1130 (691-4.0)	
ALTERNATE		(1101-4.4)	(1191-6.0)	

- NOTES**
- MAX IAS: INITIAL : 210KT.
  - NO CIRCLING IN SECTOR SOUTH-EAST OF RWY 23 & RWY 36 BEYOND 3 NM.

Changes: D576D ADDED, Editorial.

WLGGN02-178