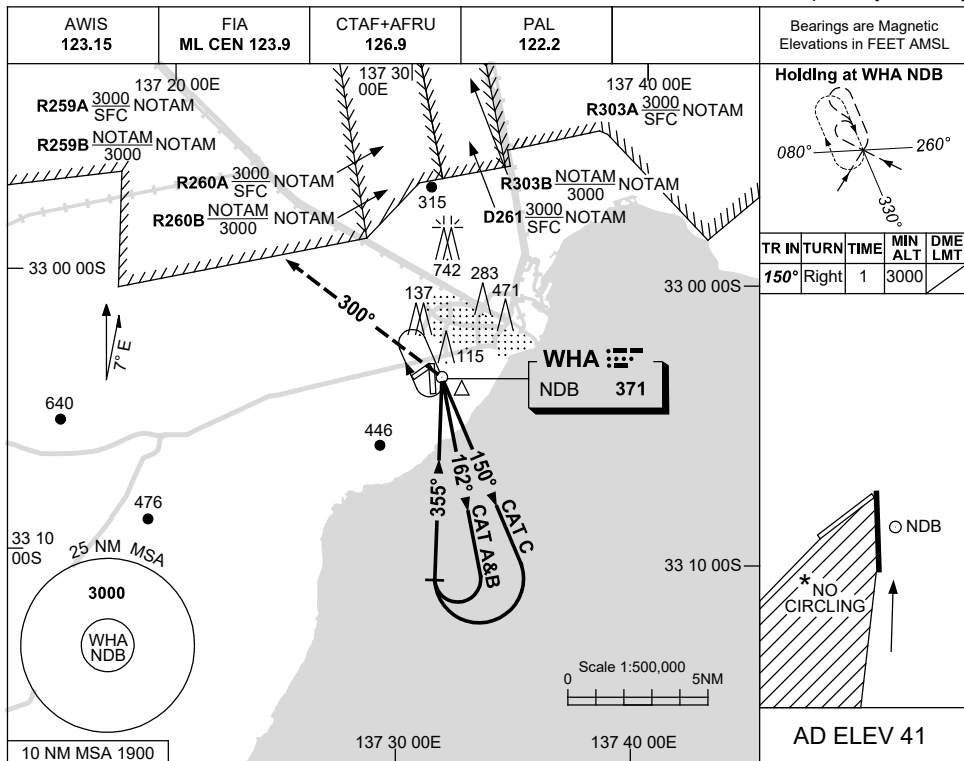


USE QNH

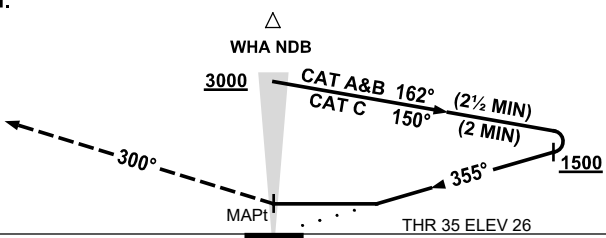
NDB RWY 35
WHYALLA, SA (YWHA)

8 SEP 2022



DME DIST	NOT APPLICABLE									
ALT										

MISSED APPROACH:
TURN LEFT,
TRACK 300°.
CLIMB TO 3000FT.



NOTES

1. MAX IAS: INITIAL : 220KT.
- * 2. NO CIRCLING IN SECTOR WEST OF RWY 17/35 AND STH OF RWY 05/23.
3. CLR RQ WHEN RESTRICTED AREAS ACT.

CATEGORY	A	B	C	D
S-I NDB	600 (574-3.2)			NOT APPLICABLE
CIRCLING *	710 (669-2.4)	1240 (1199-4.0)		
ALTERNATE	(1169-4.4)		(1699-6.0)	

Changes: AWIS FREQUENCY.

WHANB01-172