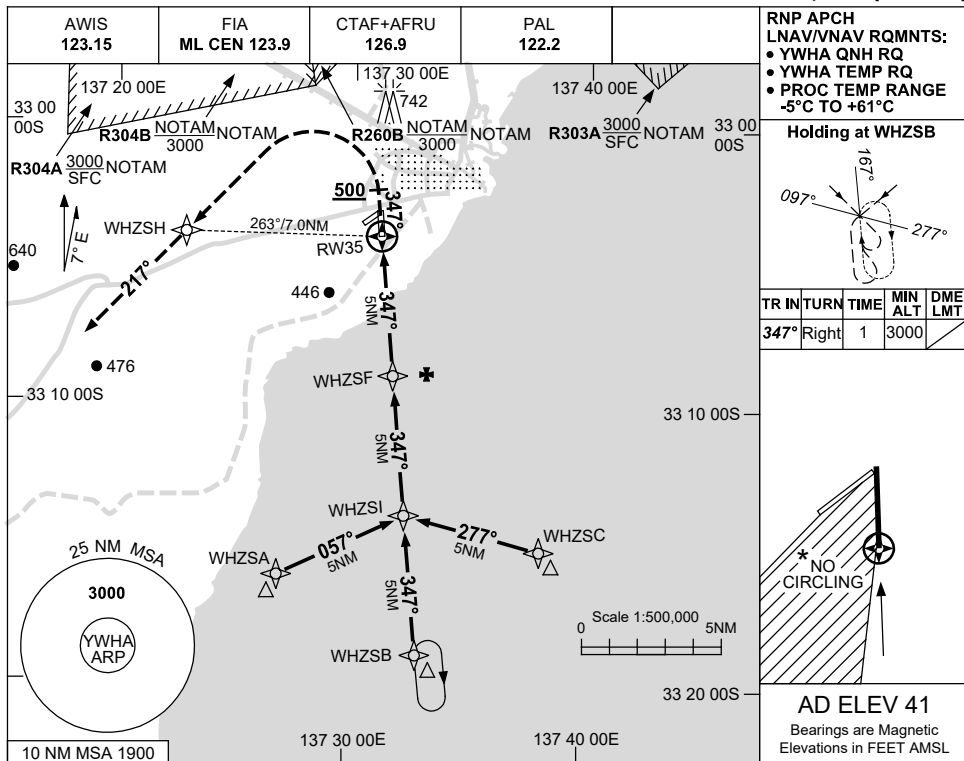


USE QNH

RNP RWY 35

WHYALLA, SA (YWHA)

1 DEC 2022



NM TO NEXT WPT	RW35	1	1.5	2	3	4	WHZSF	1	2	3	4	4.2	
ALT (3° APCH PATH)		390	550	710	1030	1350	1670	1990	2310	2620	2940	3000	

MISSED APPROACH:
 TRACK 347° AS SOON AS PRACTICABLE BUT NOT BELOW 500FT. TURN LEFT. TRACK DCT TO WHZSH. THEN TRACK 217°. CLIMB TO 3000FT.

NM TO RW35: 0, 5, 10, 15

NOTES

CATEGORY	A	B	C	D
LNAV/VNAV	390 (364-2.0)			NOT APPLICABLE
LNAV	550 (524-3.0)			
CIRCLING *	710 (669-2.4)		1240 (1199-4.0)	
ALTERNATE	(1169-4.4)		(1699-6.0)	

- MAX IAS:
INITIAL : 210KT.
MAP TURN: 200KT.
- *2. NO CIRCLING IN SECTOR WEST OF RWY 17/35 AND STH OF RWY 05/23.

Changes: CHART TITLE, PBN SPECIFICATION BOX.

WHAGN02-173