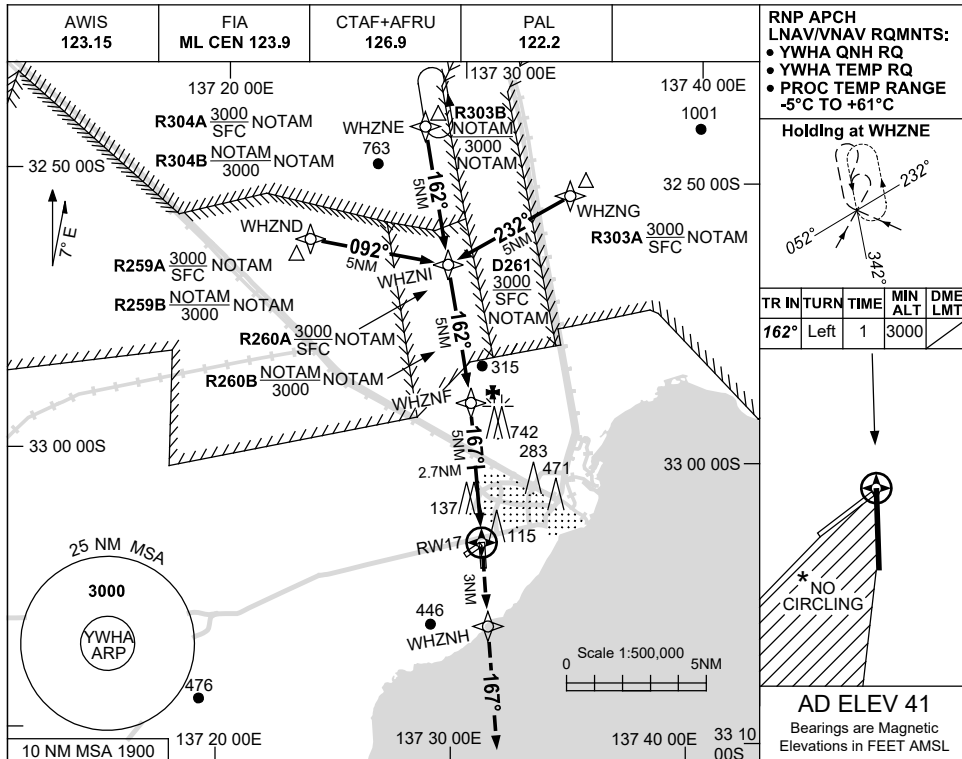


USE QNH

RNP RWY 17
WHYALLA, SA (YWHA)

1 DEC 2022



RNP APCH LNAV/VNAV RQMNTS:

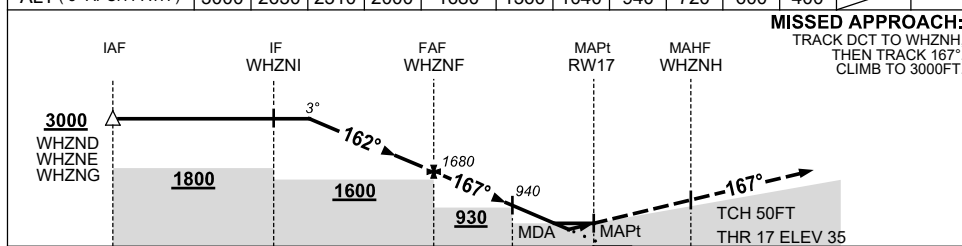
- YWHA QNH RQ
- YWHA TEMP RQ
- PROC TEMP RANGE -5°C TO +61°C

Holding at WHZNE

| TR IN | TURN | TIME | MIN ALT | DME LMT |
|-------|------|------|---------|---------|
| 162° | Left | 1 | 3000 | |

AD ELEV 41
Bearings are Magnetic
Elevations in FEET AMSL

| NM TO NEXT WPT | 4.2 | 3 | 2 | 1 | WHZNF | 4 | 3 | 2.7 | 2 | 1.6 | 1 | RW17 |
|--------------------|------|------|------|------|-------|------|------|-----|-----|-----|-----|------|
| ALT (3° APCH PATH) | 3000 | 2630 | 2310 | 2000 | 1680 | 1360 | 1040 | 940 | 720 | 600 | 400 | |



MISSED APPROACH:
TRACK DCT TO WHZNH,
THEN TRACK 167°.
CLIMB TO 3000FT.

NOTES

1. MAX IAS:
HOLDING: 210KT.
INITIAL : 210KT.
- * 2. NO CIRCLING IN SECTOR WEST OF RWY 17/35 AND STH OF RWY 05/23.
3. CLR RQ WHEN RESTRICTED AREAS ACT.

| CATEGORY | A | B | C | D |
|------------|---------------|---------------|-----------------|----------------|
| LNAV/VNAV | | 400 (365-2.0) | | NOT APPLICABLE |
| LNAV | | 600 (559-3.2) | | |
| CIRCLING * | 710 (669-2.4) | | 1240 (1199-4.0) | |
| ALTERNATE | (1169-4.4) | | (1699-6.0) | |

Changes: CHART TITLE, PBN SPECIFICATION BOX.

WHAGN01-173