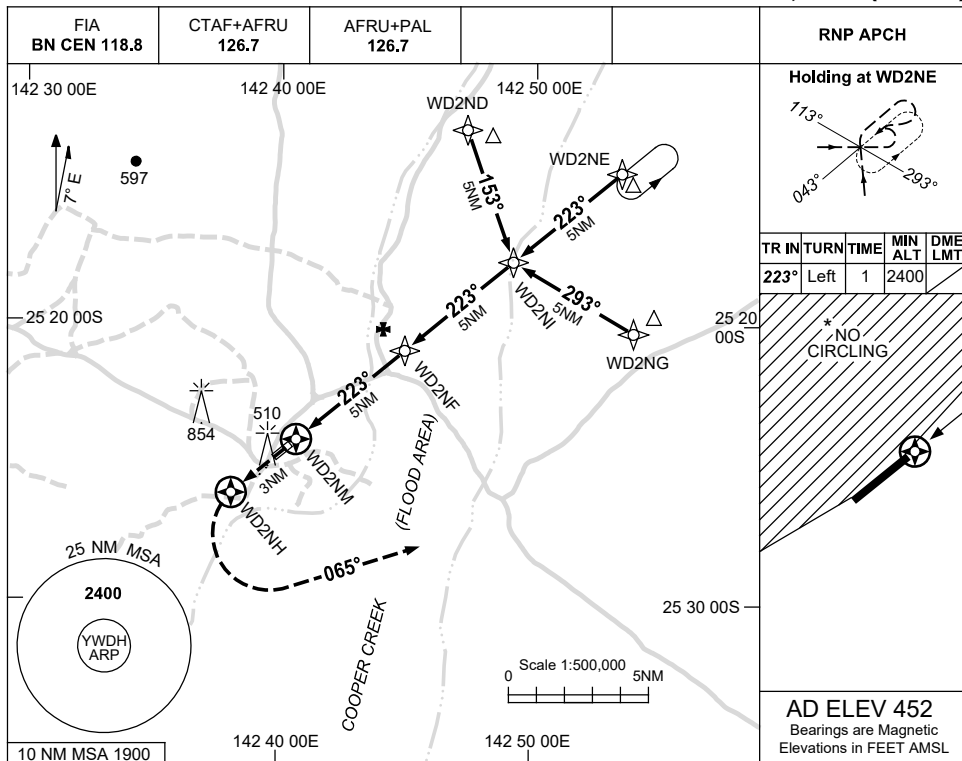


USE QNH

RNP RWY 22  
WINDORAH, QLD (YWDH)

15 JUN 2023

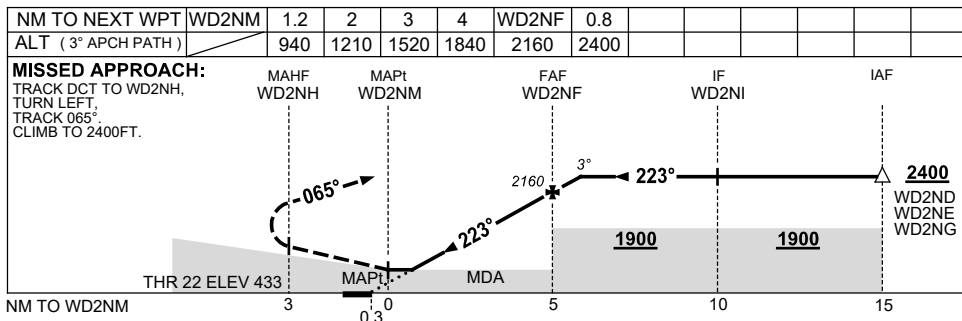


**Holding at WD2NE**

TR	IN	TURN	TIME	MIN ALT	DME LMT
223°	Left	1	2400		

\* NO CIRCLING

**AD ELEV 452**  
Bearings are Magnetic  
Elevations in FEET AMSL



**NOTES**

CATEGORY	A	B	C	D
LNAV	940 (507-2.9)			NOT APPLICABLE
CIRCLING *	1060 (608-2.4)		1160 (708-4.0)	
ALTERNATE	(1108-4.4)		(1208-6.0)	

- 1. MAX IAS: INITIAL : 210KT.
- \* 2. NO CIRCLING N OF RWY 04/22.

Changes: MAG VAR, WPT NAMING CONVENTION.

WDHGN02-175