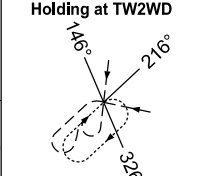
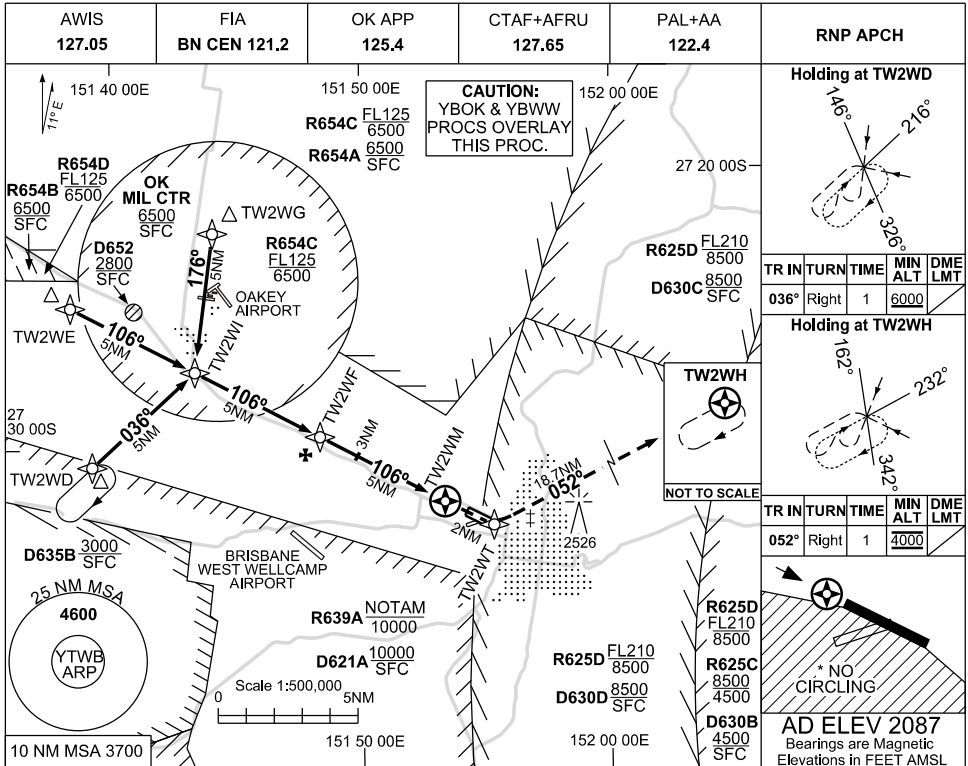


USE QNH

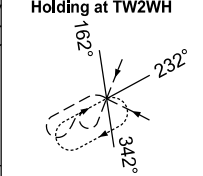
RNP RYW 11

TOOWOOMBA, QLD (YTWB)

16 JUN 2022



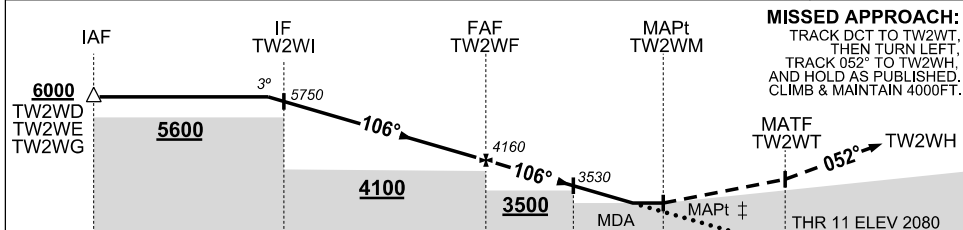
TR IN	TURN	TIME	MIN ALT	DME LMT
036°	Right	1	6000	



TR IN	TURN	TIME	MIN ALT	DME LMT
052°	Right	1	4000	



NM TO NEXT WPT	0.8	TW2WI	4	3	2	1	TW2WF	4	3	2	1	0.3	TW2WM
ALT (3° APCH PATH)	6000	5750	5440	5120	4800	4480	4160	3840	3530	3210	2890	2680	



MISSED APPROACH:
 TRACK DCT TO TW2WT,
 THEN TURN LEFT,
 TRACK 052° TO TW2WH,
 AND HOLD AS PUBLISHED.
 CLIMB & MAINTAIN 4000FT.

MATF TW2WT
 THR 11 ELEV 2080

NOTES

- MAX IAS :
 TW2WD HOLDING: 210KT.
 TW2WH HOLDING: 180KT.
 † INITIAL : 210KT.
 † MAP TURN : 180KT.
- NO CIRCLING SOUTH OF RYW 11/29.
- PRD OPR HR VIA NOTAM EXCEPT
 D652: H24.
 D630C: SEE ERSA.
 D635B: HJ

CATEGORY	A	B	C	D
LNAV	2680 (593 - 3.4)			NOT APPLICABLE
CIRCLING *	2960 (873 - 2.4)		NOT AUTHORISED	
ALTERNATE	(1373 - 4.4)		(1473 - 6.0)	

Changes: WPT IDENT, R654ABCD, OK MIL CTR, PAL+AA.

TWBG01-171