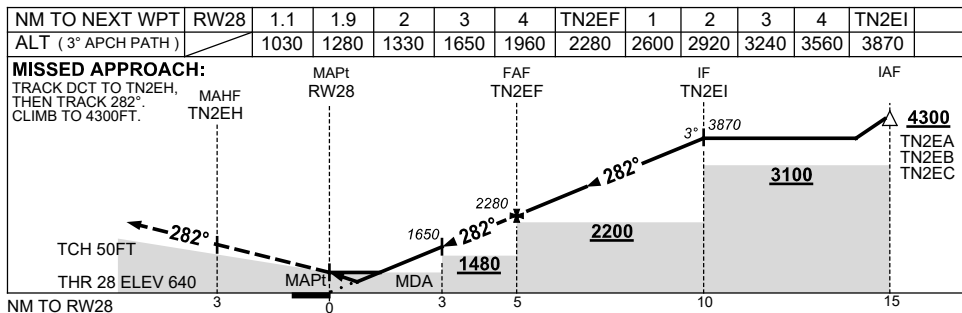
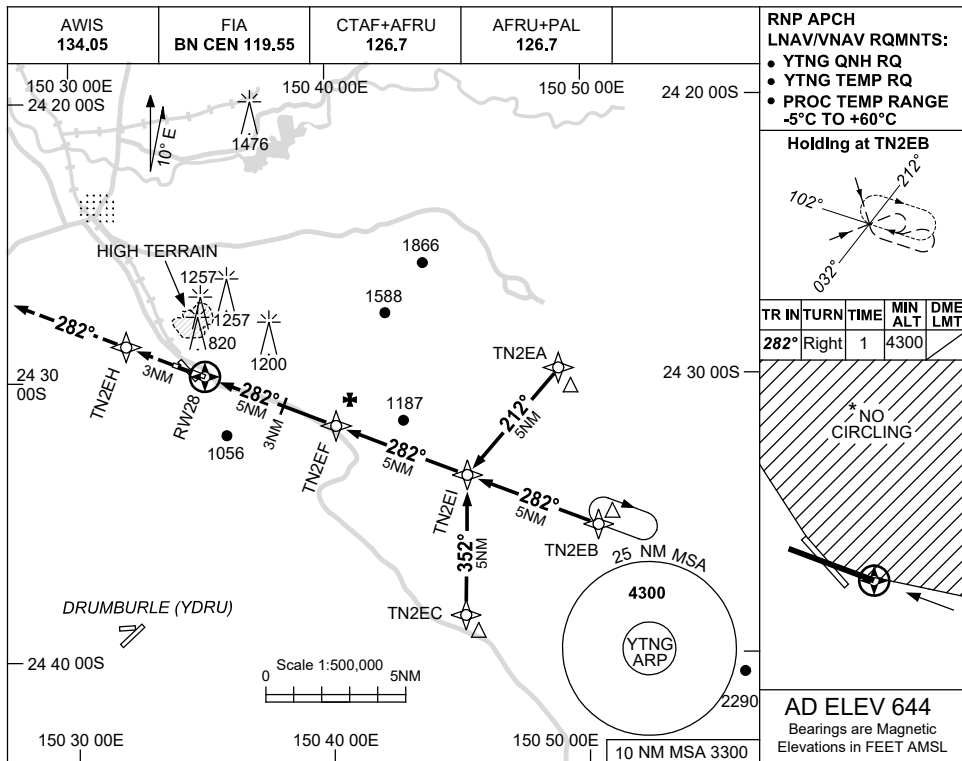


USE QNH

RNP RWY 28
THANGOOL, QLD (YTNG)

16 JUN 2022



NOTES

CATEGORY	A	B	C	D
LNAV/VNAV	1030 (390-2.2)			NOT APPLICABLE
LNAV	1280 (636-3.6)			
CIRCLING *	1700 (1056-2.4)		1860 (1216-4.0)	
ALTERNATE	(1556-4.4)		(1716-6.0)	

- MAX IAS: INITIAL : 210KT.
- NO CIRCLING IN SECTOR NORTH OF RWYS 14/32 & 10/28.

Changes: CHART TITLE, PBN SPECIFICATION BOX.

TNGGN02-171

