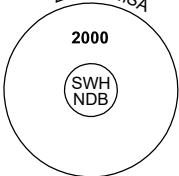


# GNSS ARRIVAL PROCEDURES SWAN HILL, VIC (YSWH)

**30 NOV 2023**

FIA <b>ML CEN 125.8</b>	CTAF+AFRU <b>119.1</b>	PAL <b>120.6</b>			Bearings are Magnetic Elevations in FEET AMSL
----------------------------	---------------------------	---------------------	--	--	--

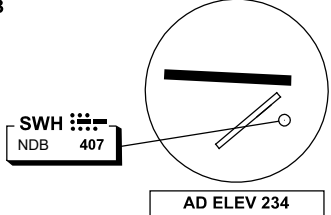
25 NM MSA



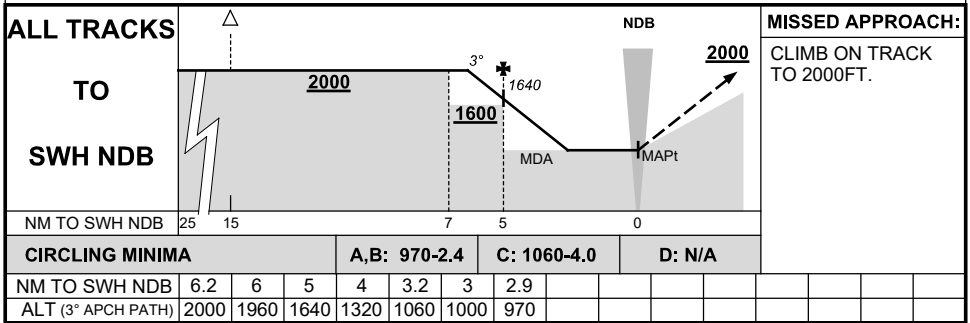
10 NM MSA 2000

**REFERENCE WAYPOINT SWH NDB**

AWIS (PHONE) 03 8470 3221



AD ELEV 234



Changes: MINIMUM SEGMENT ALTITUDE, NEW LOGO.