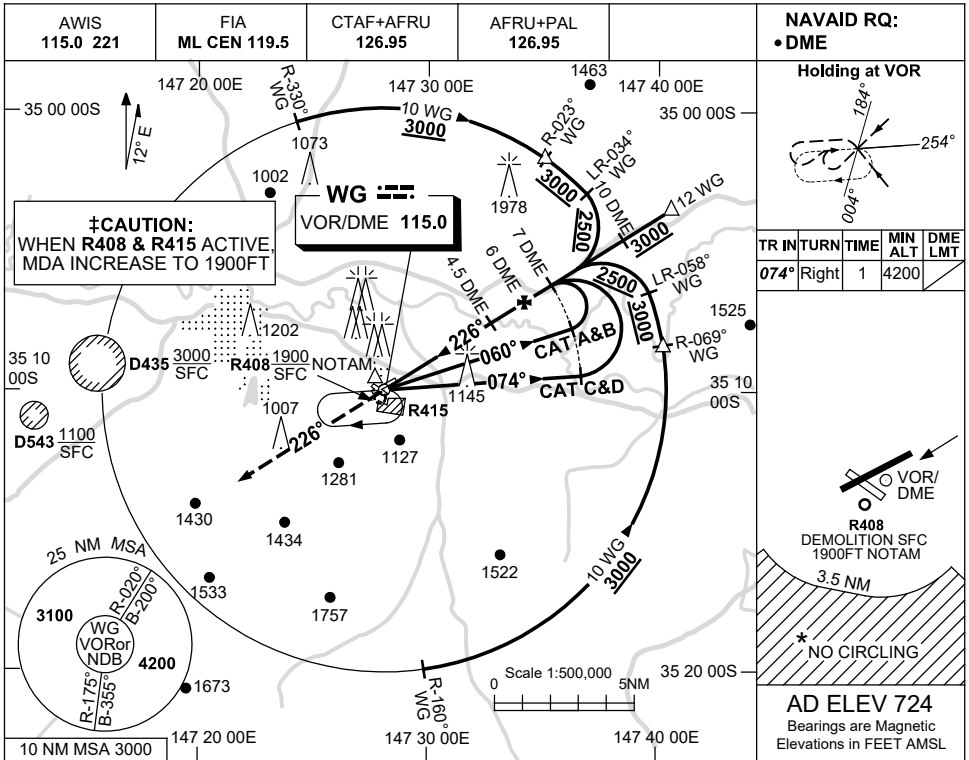


USE QNH

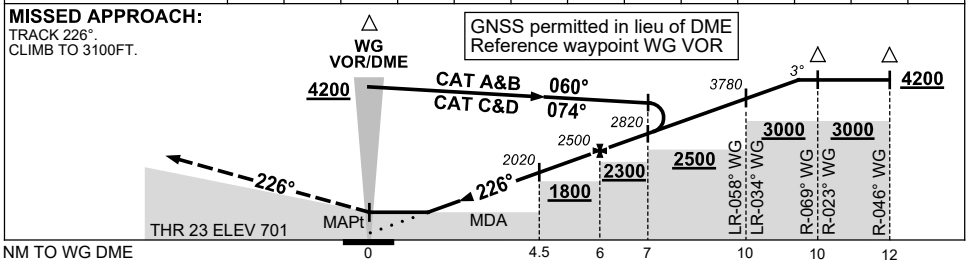
VOR RWY 23

17 JUN 2021

WAGGA WAGGA, NSW (YSWG)



NM TO WG DME	2.8	3	4	4.5	5	6	7	8	9	10	11.3		
ALT (3° APCH PATH)	1500	1550	1870	2020	2180	2500	2820	3140	3460	3780	4200		



NOTES

CATEGORY	A	B	C	D
S-I VOR/DME ‡	1500 (799-4.6)			
CIRCLING *	‡ 1710 (986-2.4)	1810 (1086-4.0)	2010 (1286-5.0)	
ALTERNATE	(1486-4.4)	(1586-6.0)	(1786-7.0)	

1. MAX IAS: INITIAL : 210KT.
- * 2. NO CIRCLING IN SECTOR SOUTH OF RWY 05/23 AND RWY 12/30 BEYOND 3.5NM.

Changes: FROM SUP H124/20.

SWGVO02-167