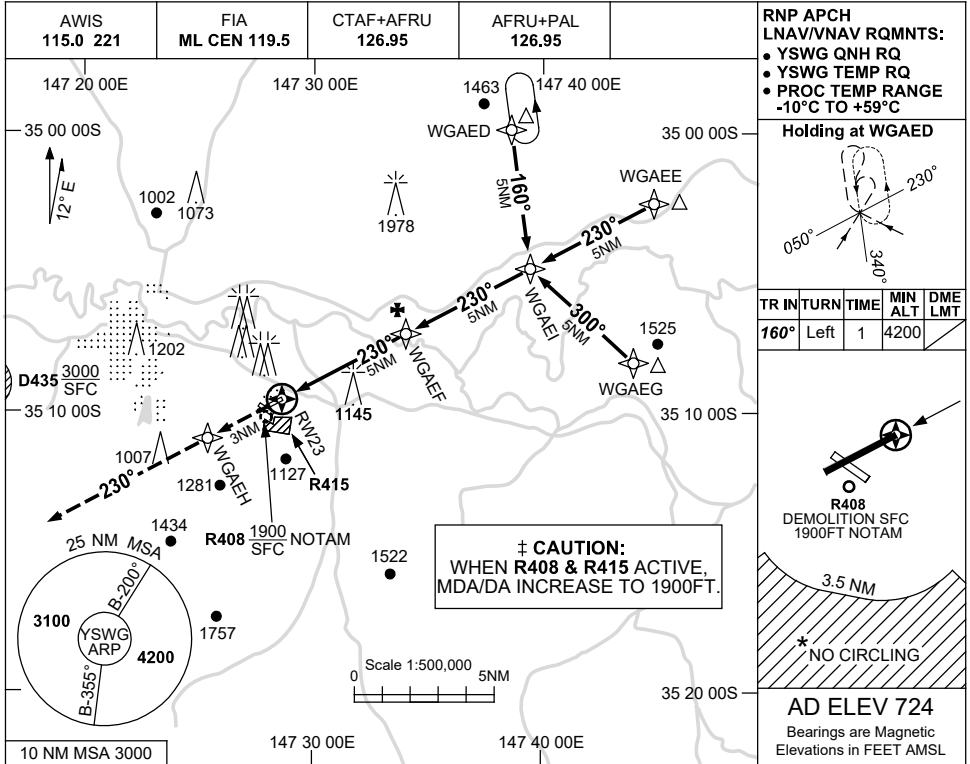


USE QNH

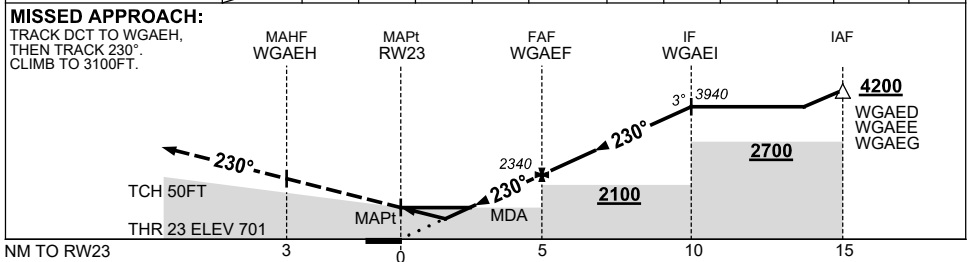
RNP RWY 23

23 MAR 2023

WAGGA WAGGA, NSW (YSWG)



NM TO NEXT WPT	RW23	1.6	2.3	3	4	WGAEF	1	2	3	4	WGAEI
ALT (3° APCH PATH)		1250	1470	1710	2020	2340	2660	2980	3300	3620	3940



**NOTES**

CATEGORY	A	B	C	D
LNAV/VNAV	±	1250 (549-3.1)		
LNAV	±	1470 (769-4.4)		
CIRCLING *	±	1710 (986-2.4)	1810 (1086-4.0)	2010 (1286-5.0)
ALTERNATE		(1486-4.4)	(1586-6.0)	(1786-7.0)

1. MAX IAS: INITIAL : 210KT.  
 \* 2. NO CIRCLING IN SECTOR SOUTH OF RWY 05/23 AND RWY 12/30 BEYOND 3.5NM.

Changes: CHART TITLE, PBN SPECIFICATION BOX.

SWGGN02-174