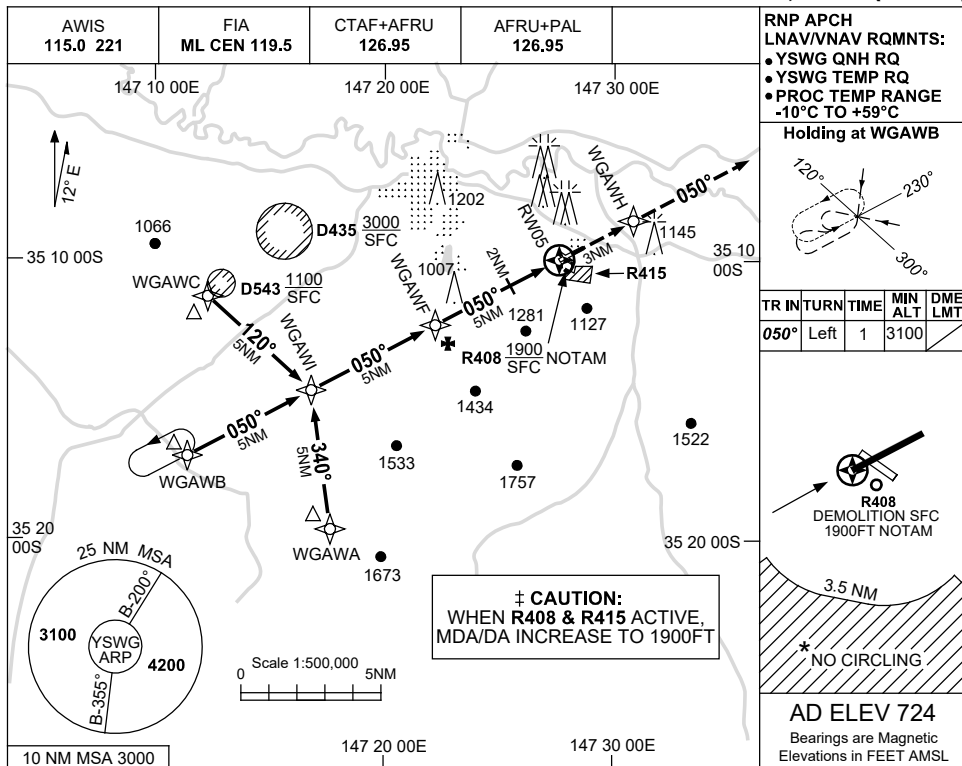


USE QNH

RNP RWY 05

23 MAR 2023

WAGGA WAGGA, NSW (YSWG)



**RNP APCH**  
**LNAV/VNAV RQMNTS:**  
 • YSWG QNH RQ  
 • YSWG TEMP RQ  
 • PROC TEMP RANGE -10°C TO +59°C

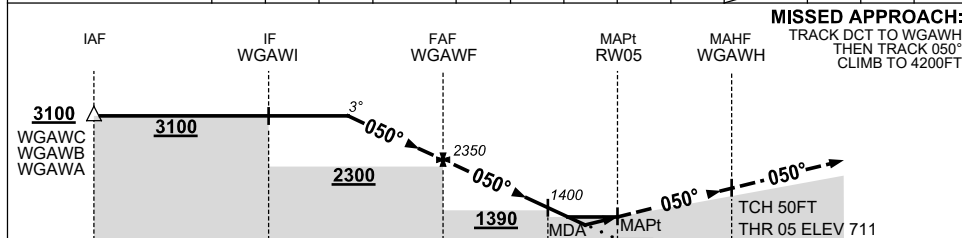
**Holding at WGAWB**

TR	IN	TURN	TIME	MIN ALT	DME LMT
050°	Left	1	3100		

**R408**  
 DEMOLITION SFC 1900FT NOTAM

**AD ELEV 724**  
 Bearings are Magnetic  
 Elevations in FEET AMSL

NM TO NEXT WPT	2.3	2	1	WGAWF	4	3	2	1.8	0.9	RW05
ALT (3° APCH PATH)	3100	2990	2670	2350	2030	1720	1400	1340	1050	



**MISSED APPROACH:**  
 TRACK DCT TO WGAWH,  
 THEN TRACK 050°,  
 CLIMB TO 4200FT.

NM TO RW05: 15, 10, 5, 2, 0, 3

CATEGORY	A	B	C	D
LNAV/VNAV	±	1050	(339-1.9)	
LNAV	±	1340	(629-3.6)	
CIRCLING *	±	1710 (986-2.4)	1810 (1086-4.0)	2010 (1286-5.0)
ALTERNATE		(1486-4.4)	(1586-6.0)	(1786-7.0)

- NOTES**
- MAX IAS: INITIAL : 210KT.
  - NO CIRCLING IN SECTOR SOUTH OF RWY 05/23 AND RWY 12/30 BEYOND 3.5NM.

Changes: CHART TITLE, PBN SPECIFICATION BOX.

SWGNG01-174