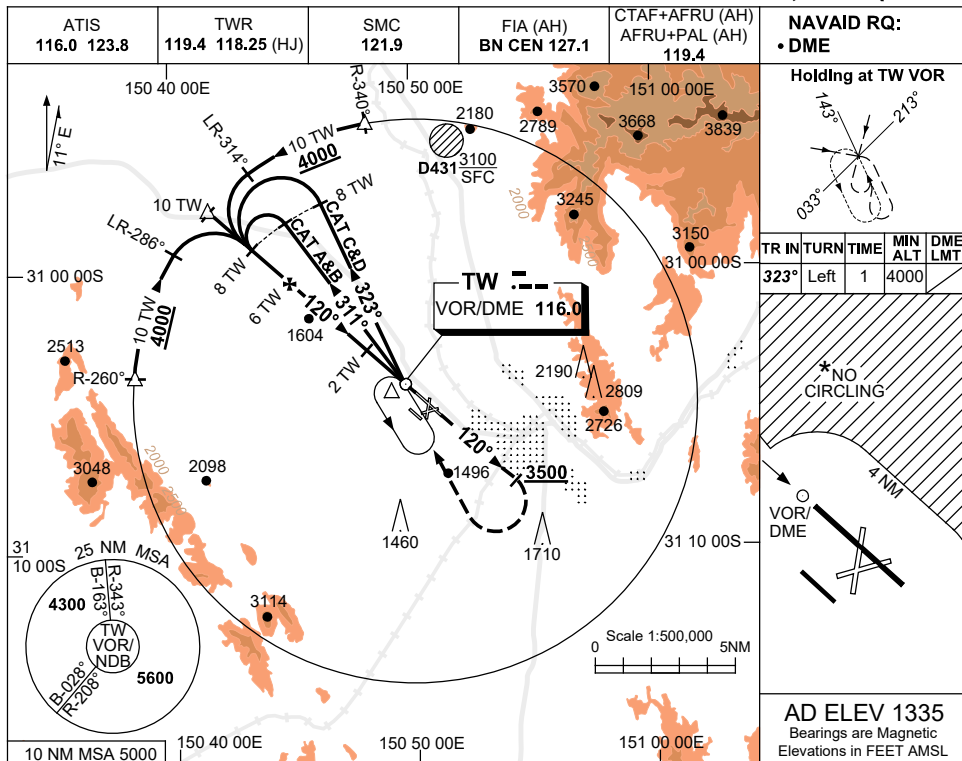


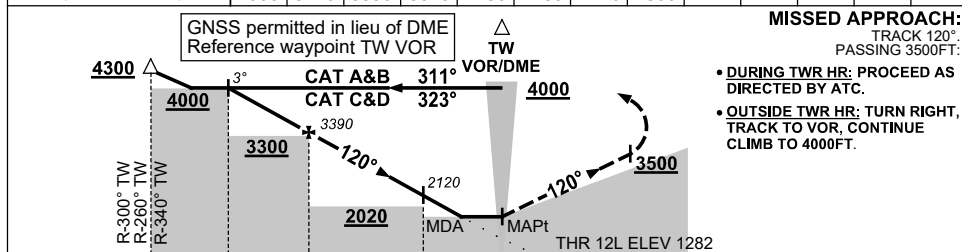
USE QNH

VOR RWY 12L  
TAMWORTH, NSW (YSTW)

16 JUN 2022



DIST TO TW DME	7.9	7	6	5	4	3	2	1.2				
ALT (3° APCH PATH)	4000	3710	3390	3070	2750	2430	2120	1860				



**NOTES**

1. MAX IAS:  
INITIAL : 210KT.
2. CAT A,B&C NO CIRCLING NE OF RWY 12L/30R BEYOND 4NM. MAX IAS 170KT.
3. CAT D NO CIRCLING NE OF RWY 12L/30R.
4. COLOUR: SEE SPEC NOTICES.

CATEGORY	A	B	C	D
S-I VOR/DME	1860 (578-3.3)			
CIRCLING *	2110 (775-2.4)	2400 (1065-4.0)	2400# (1065-5.0)	
ALTERNATE	(1275-4.4)	(1565-6.0)	(1565-7.0)	

Changes: UNLIT 1710FT OBST.

STWV001-171