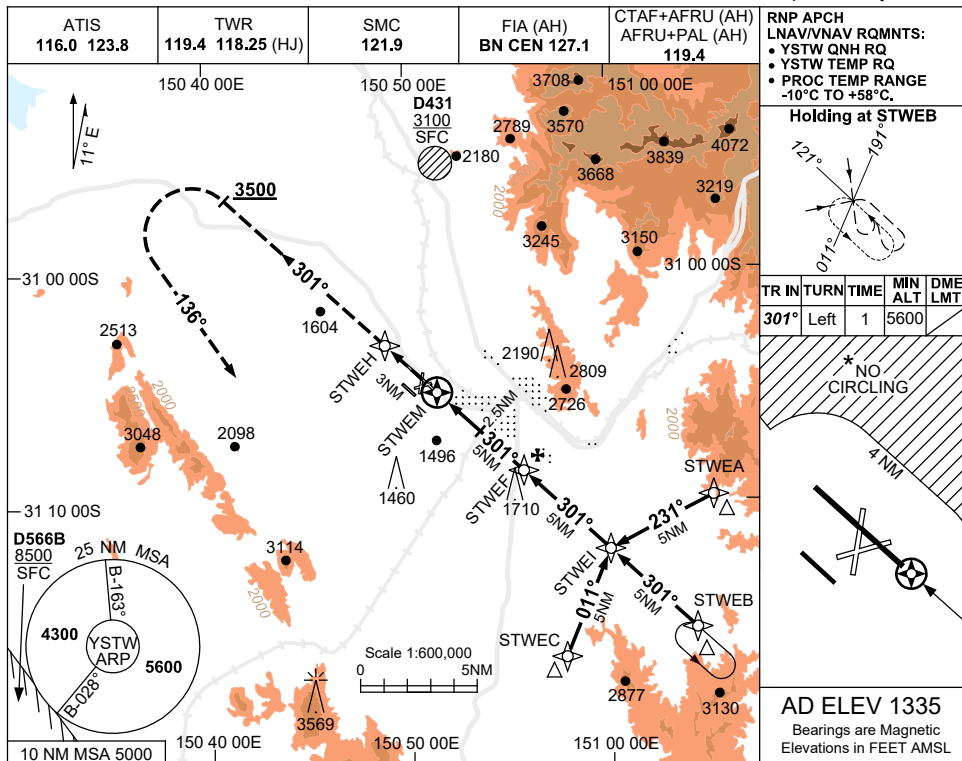


USE QNH

RNP RWY 30R

21 MAR 2024

TAMWORTH, NSW (YSTW)



**RNP APCH LNAV/VNAV RQMNTS:**

- YSTW QNH RQ
- YSTW TEMP RQ
- PROC TEMP RANGE -10°C TO +58°C.

**Holding at STWEB**

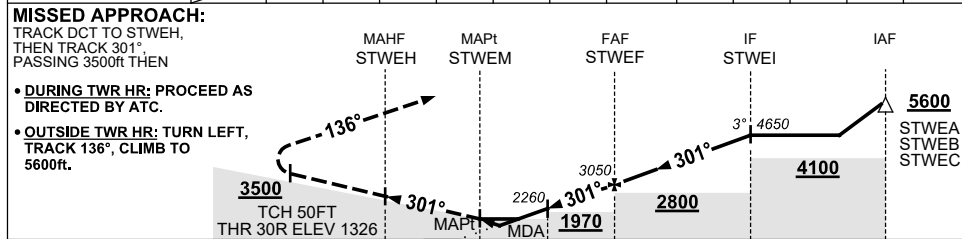
TR	IN	TURN	TIME	MIN ALT	DME LMT
301°	Left	1	5600		

**NO CIRCLING**

4 NM

**AD ELEV 1335**  
Bearings are Magnetic  
Elevations in FEET AMSL

NM TO NEXT WPT	STWEM	0.8	1.3	2	2.5	3	4	STWEF	1	2	3	4	STWEI
ALT (3° APCH PATH)		1700	1870	2100	2260	2420	2740	3050	3370	3690	4010	4330	4650



NM TO STWEM: 3, 0.3, 1, 2.5, 5, 10, 15

**NOTES**

1. MAX IAS: INITIAL : 220KT.
- \* 2. CAT A,B&C NO CIRCLING NE OF RWY 12L/30R BEYOND 4NM. MAX IAS 170KT.
- # 3. CAT D NO CIRCLING NE OF RWY 12L/30R.
4. HLDG NOT CONTAINED IN CTA.
5. COLOUR: SEE SPEC NOTICES.

CATEGORY	A	B	C	D
LNAV/VNAV		1700 (374-2.1)		
LNAV		1870 (544-3.1)		
CIRCLING *	2110 (775-2.4)		2400 (1065-4.0)	2400#(1065-5.0)
ALTERNATE	(1275-4.4)		(1565-6.0)	(1565-7.0)

Changes: D566B ADDED, Editorial.

STWGN02-178