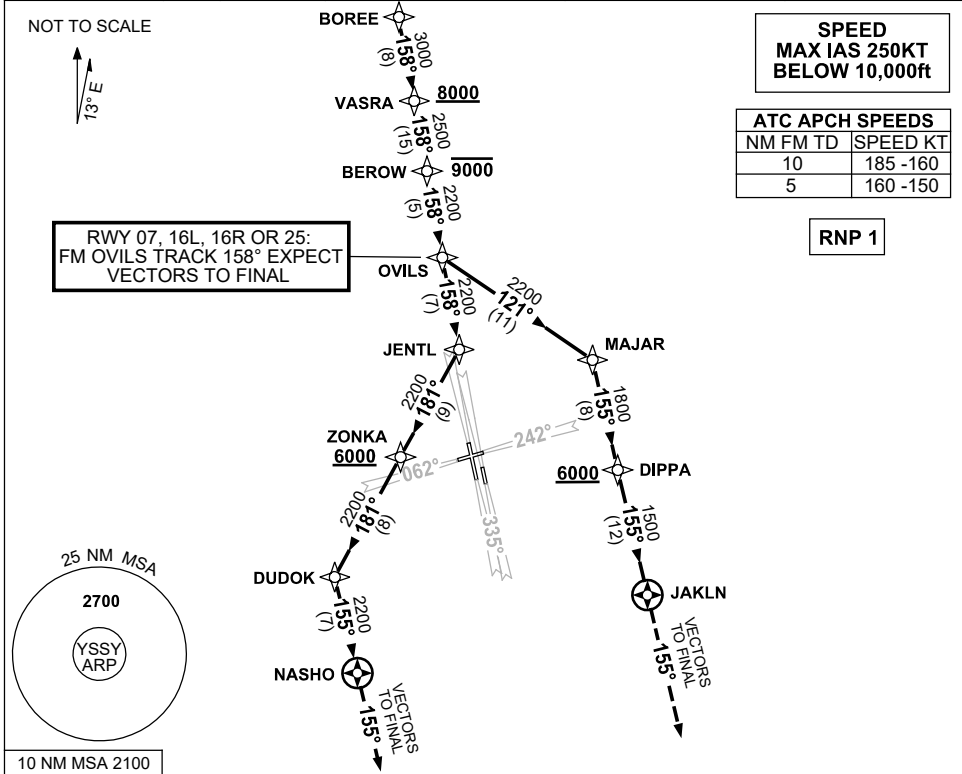


**STANDARD INSTRUMENT ARRIVAL (STAR)
BOREE THREE ALPHA ARRIVAL (RNAV)
SYDNEY/KINGSFORD SMITH, NSW (YSSY)**

24 MAR 2022

ATIS 118.55 126.25	APP 124.4	DIRECTOR E 125.3 W 126.1	TWR RWYS 16R/34L, 07/25 120.5 RWYS 16L/34R 124.7	SMC E OF RWY 16R/34L 121.7 W OF RWY 16R/34L 126.5	Bearings are Magnetic Elevations in FEET AMSL
-----------------------	--------------	--------------------------------	--	---	--



- ARRIVAL:** **BOREE THREE ALPHA**
- From BOREE track 158° to VASRA
Cross VASRA AT or ABV 8000ft
 - Track 158° to BEROW
Cross BEROW AT or BLW 9000ft
 - Track 158° to OVILS
- RWY 07, 16L, 16R, or 25:**
- Track 158°, EXPECT radar vectors to final
- RWY 34L:**
- Track 158° to JENTL
 - Turn RIGHT, track 181° to ZONKA
Cross ZONKA AT or ABV 6000ft
 - Track 181° to DUDOK
 - Turn LEFT, track 155° to NASHO
 - Track 155°, EXPECT radar vectors to final

- RWY 34R:**
- Turn LEFT, track 121° to MAJAR
 - Turn RIGHT, track 155° to DIPPA
Cross DIPPA AT or ABV 6000ft
 - Track 155° to JAKLN
 - Track 155°, EXPECT radar vectors to final
- NOTE:** For RWY 34R during PRM operations, expect to track downwind until reaching 2000ft

**COMMUNICATIONS FAILURE: PROCEDURE IN IMC
IF ABLE CTC SY APP +61 2 9556 6515**

- Squawk 7600, comply with vertical navigation requirements, but not below MSA.
- Track via the latest STAR clearance to the nominated runway, then fly the most suitable approach in accordance with ERS A EMERG Section 1.5.