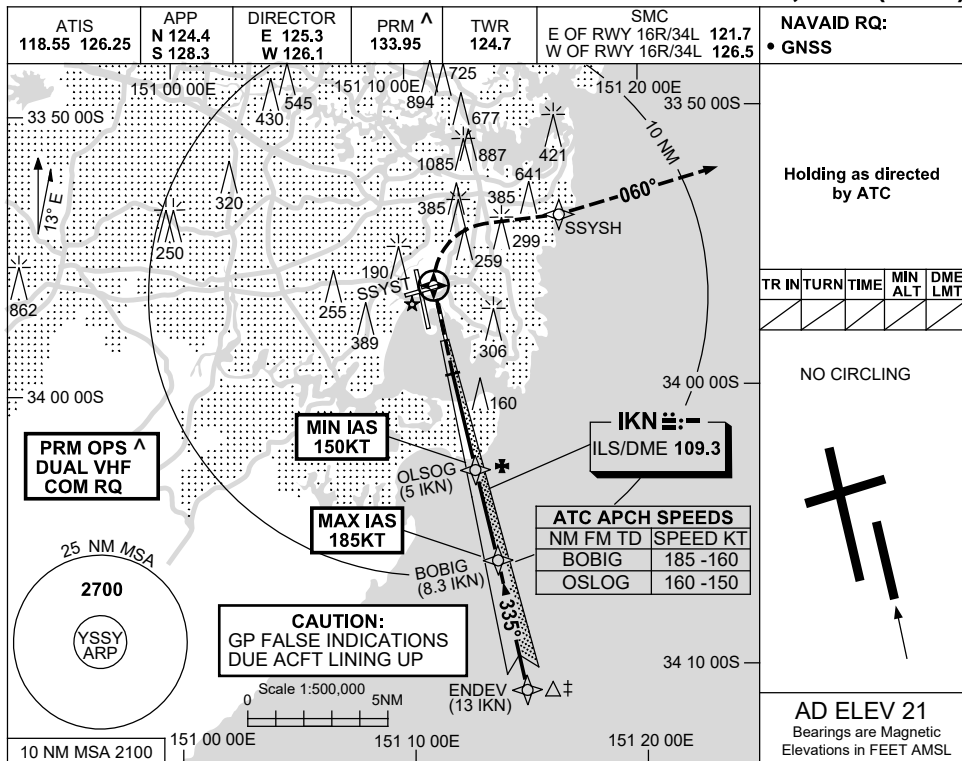
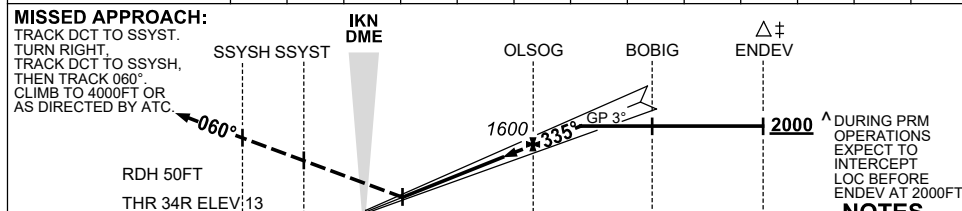


30 NOV 2023

**SYDNEY/KINGSFORD SMITH, NSW (YSSY)**



NM TO IKN DME	1	2	3	4	5	6	6.3				
ALT (3° APCH PATH)	330	650	960	1280	1600	1920	2000				



NM TO IKN DME	1.8	0	5	8.3	13
NM TO THR 34R	2	0	4.8	8.1	12.8

- NOTES**
1. MAX IAS: BOBIG : 185KT, MAP UNTIL SSYSH : 185KT.
  - ⊕ 2. ACFT MAY BE RADAR VECTORED TO FNA.
  - ⊕ 3. SIMULTANEOUS APCH AUTHORISED WITH RWY 34L. SEE PRM USER INSTRUCTIONS FOR ADDN RQMNTS.
  - ⊕ 4. SPECIAL AIRCREW & ACFT CERTIFICATION REQUIRED.

CATEGORY	A	B	C	D
S-I ILS SA CAT II #(3.7% MAP)		RA 101 DA 113 (100) 600 RVR		
S-I ILS SA CAT I #(3.4% MAP)		RA 158 DA 163 (150) 650 RVR		

Changes: Editorial.

**CAUTION: CLOSELY SPACED PARALLEL RUNWAYS <sup>^</sup>**

SSYI23-177