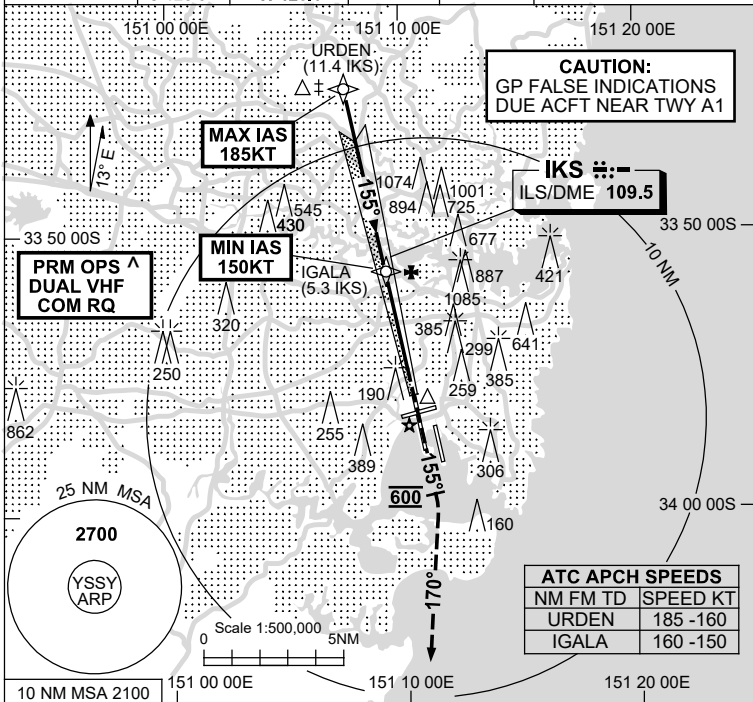


23 MAR 2023

ATIS 118.55 126.25	APP N 124.4 S 128.3	DIRECTOR E 125.3 W 126.1	PRM ^ 119.45	TWR 120.5	SMC E OF RWY 16R/34L 121.7 W OF RWY 16R/34L 126.5
-----------------------	---------------------------	--------------------------------	-----------------	--------------	---

**NAVAID RQ:**  
• DME or GNSS (ILS SA CAT I)  
• DME (ILS SA CAT II and CAT I)



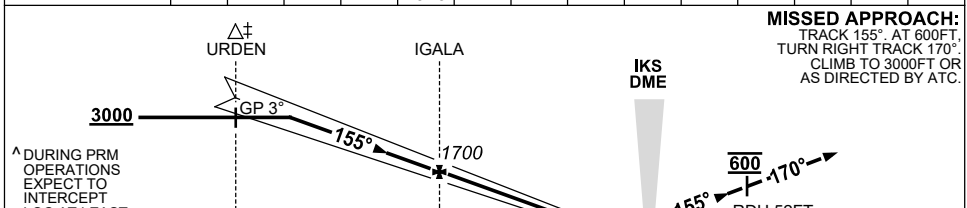
**Holding as advised by ATC**

TR IN	TURN	TIME	MIN ALT	DME LMT

**NO CIRCLING**

**AD ELEV 21**  
Bearings are Magnetic  
Elevations in FEET AMSL

NM TO IKS DME	9.4	9	8	7	6	5.3	5	4	3	2	1		
ALT (3° APCH PATH)	3000	2870	2560	2240	1920	1700	1600	1280	960	640	330		



NM TO IKS DME	11.4	5.3	
NM TO THR 16R	11.2	5.2	0

**NOTES**

- MAX IAS: URDEN : 185KT.
- ACFT MAY BE RADAR VECTORED TO FNA.
- SIMULTANEOUS APCH AUTHORIZED WITH RWY 16L. SEE PRM USER INSTRUCTIONS FOR ADDN RQMNTS.
- SPECIAL AIRCREW & ACFT CERTIFICATION REQUIRED.
- CAT A, B, C 350 RVR CAT D 400 RVR.

CATEGORY	A	B	C	D
S-I ILS CAT II#		RA 101 DA 107 (100)	300 RVR	
S-I ILS SA CAT II#		RA 101 DA 107 (100)	350/400 RVR§	
S-I ILS SA CAT I#		RA 148 DA 157 (150)	450 RVR	

Changes: Editorial. SSYII20-174

**CAUTION: CLOSELY SPACED PARALLEL RUNWAYS ^**