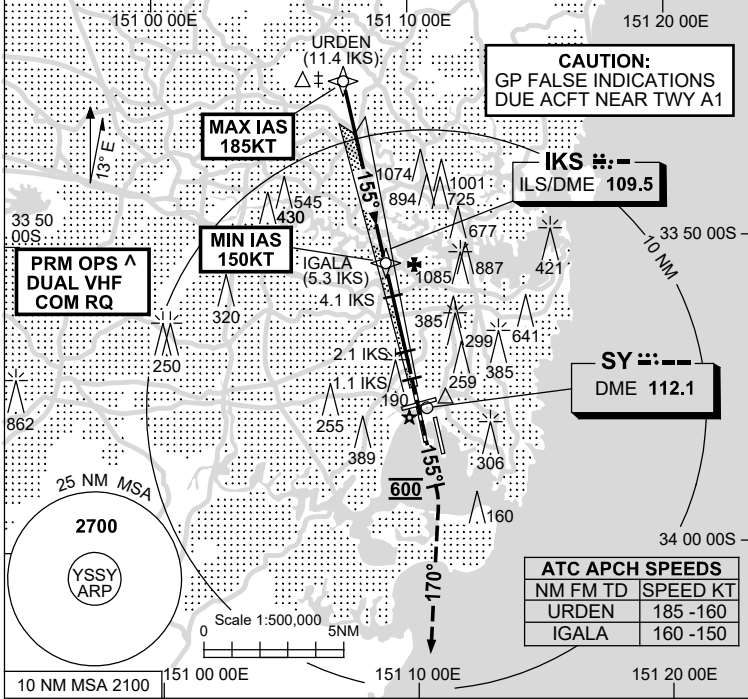


23 MAR 2023

ATIS 118.55 126.25	APP N 124.4 S 128.3	DIRECTOR E 125.3 W 126.1	PRM ^ 119.45	TWR 120.5	SMC E OF RWY 16R/34L 121.7 W OF RWY 16R/34L 126.5
-----------------------	---------------------------	--------------------------------	-----------------	--------------	---

NAVAID RQ:
 • DME or GNSS (ILS)
 • DME (LOC ONLY)



Holding as advised by ATC

TR IN	TURN	TIME	MIN ALT	DME LMT

* NO CIRCLING

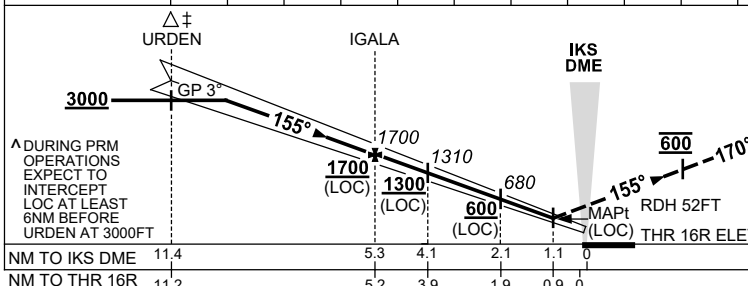
3 DME SY

IKS DME

SY DME

AD ELEV 21
 Bearings are Magnetic
 Elevations in FEET AMSL

NM TO IKS DME	9.4	9	8	7	6	5.3	5	4.1	4	3	2.1	2	1.4	
ALT (3° APCH PATH)	3000	2870	2560	2240	1920	1700	1600	1310	1280	960	680	640	460	



MISSED APPROACH:
 TRACK 155°. AT 600FT,
 TURN RIGHT TRACK 170°.
 CLIMB TO 3000FT OR
 AS DIRECTED BY ATC.

NOTES

1. MAX IAS :
 URDEN : 185KT.
2. ACFT MAY BE
 RADAR VECTORED
 TO FNA.
3. SIMULTANEOUS APCH
 AUTHORISED WITH
 RWY 16L. SEE PRM
 USER INSTRUCTIONS
 FOR ADDN RQMNTS.
4. NO CIRCLING
 BEYOND 3 DME SY
 EAST OF RWY 16R &
 NORTH OF RWY 25.
5. SPECIAL ALTN MNM
 700/2.5KM.

NM TO IKS DME	11.4	5.3	4.1	2.1	1.1	0
NM TO THR 16R	11.2	5.2	3.9	1.9	0.9	0

CATEGORY	A	B	C	D
S-I ILS CAT I		210 (203)	0.8	550 RVR
S-I LOC		460 (453-1.7)		
CIRCLING *	710 (689-2.4)		1000 (979-4.0)	1000 (979-5.0)
ALTERNATE *	(1189-4.4)		(1479-6.0)	(1479-7.0)

Changes: Editorial.

SSYII11-174

CAUTION: CLOSELY SPACED PARALLEL RUNWAYS ^