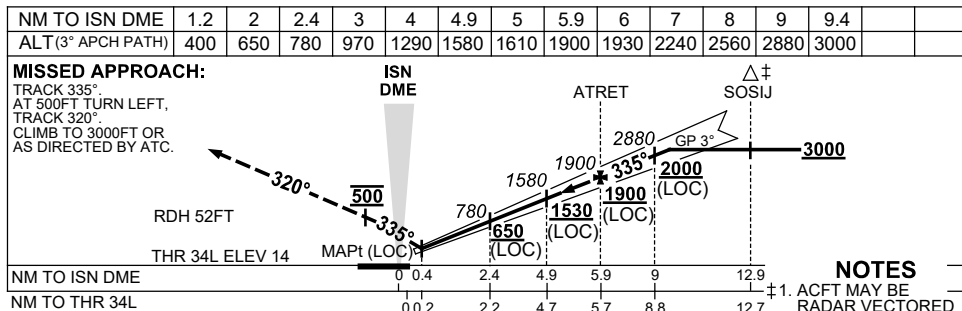
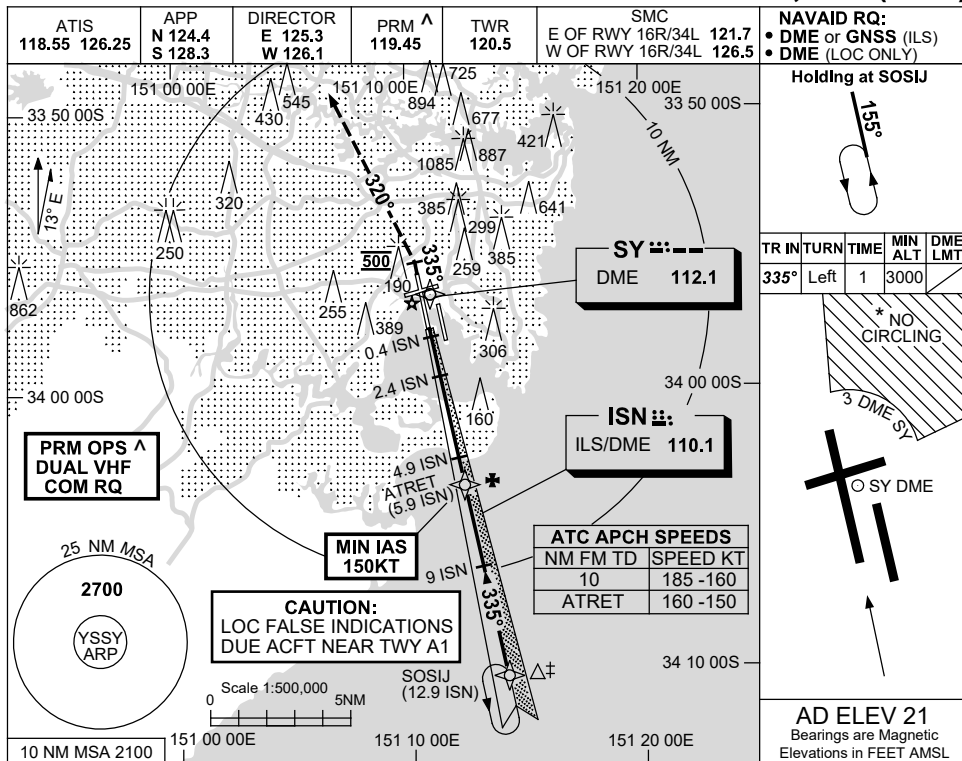


9 SEP 2021

**SYDNEY/KINGSFORD SMITH, NSW (YSSY)**



CATEGORY	A	B	C	D
S-I ILS CAT I		220 (206)	0.8	800 RVR
S-I LOC		400 (386-1.7)		
CIRCLING *	710 (689-2.4)		1000 (979-4.0)	1000 (979-5.0)
ALTERNATE *	(1189-4.4)		(1479-6.0)	(1479-7.0)

Changes: NOTE 2.

**CAUTION: CLOSELY SPACED PARALLEL RUNWAYS  $\Delta$**

SSYII10-168