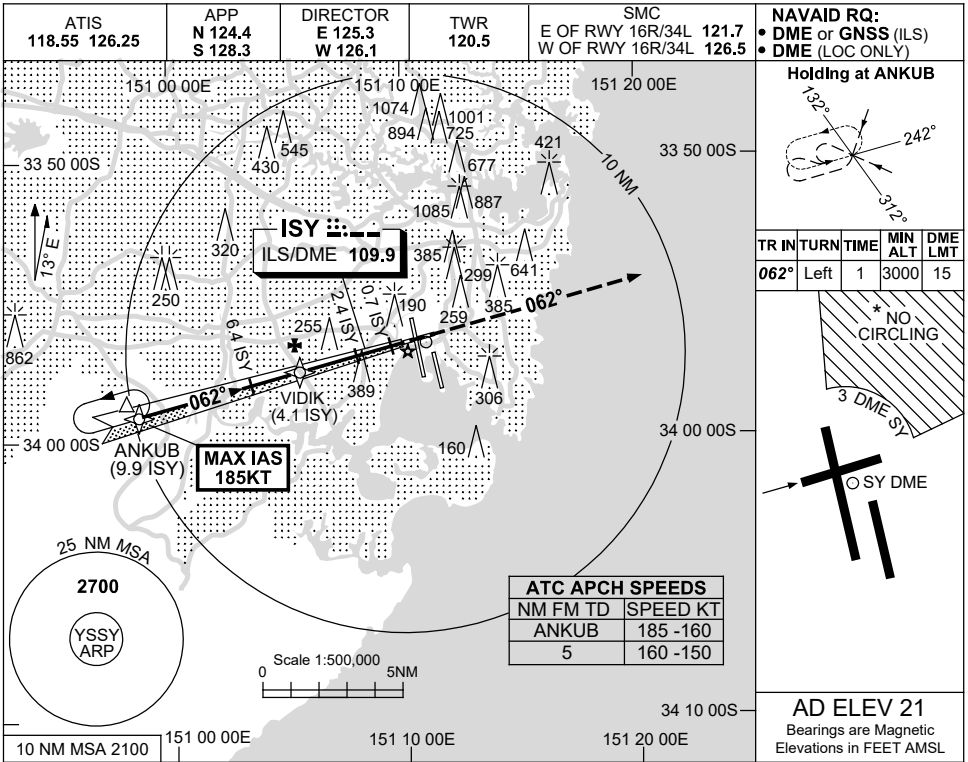


USE QNH

ILS or LOC RWY 07

30 NOV 2023

SYDNEY/KINGSFORD SMITH, NSW (YSSY)



NM TO ISY DME	9.4	9	8	7	6.4	6	5	4.1	3	2.4	2	1.9		
ALT (3° APCH PATH)	3000	2880	2560	2240	2050	1920	1600	1320	970	770	650	600		

MISSED APPROACH:
 TRACK 062°.
 CLIMB TO 3000FT OR
 AS DIRECTED BY ATC.

RDH 51FT
THR 07 ELEV 16

NM TO ISY DME	9.9	6.4	4.1	2.4	0.7	0
NM TO THR 07	9.7	6.2	3.9	2.2	0.5	0

NOTES

1. MAX IAS:
ANKUB : 185KT.
- * 2. NO CIRCLING
BEYOND 3 DME SY
EAST OF RWY 16R &
NORTH OF RWY 25.
- ‡ 3. SPECIAL ALTN MNM
700/2.5KM.
(NOT APPLICABLE
TO LOC/DME).

CATEGORY	A	B	C	D
S-I ILS		220 (204-1.5)	1500 RVR	
S-I LOC		600 (579-3.3)		
CIRCLING*	710 (689-2.4)		1000 (979-4.0)	1000 (979-5.0)
ALTERNATE‡	(1189-4.4)		(1479-6.0)	(1479-7.0)

Changes: MISSED APPROACH, NEW LOGO.

SSYII07-177