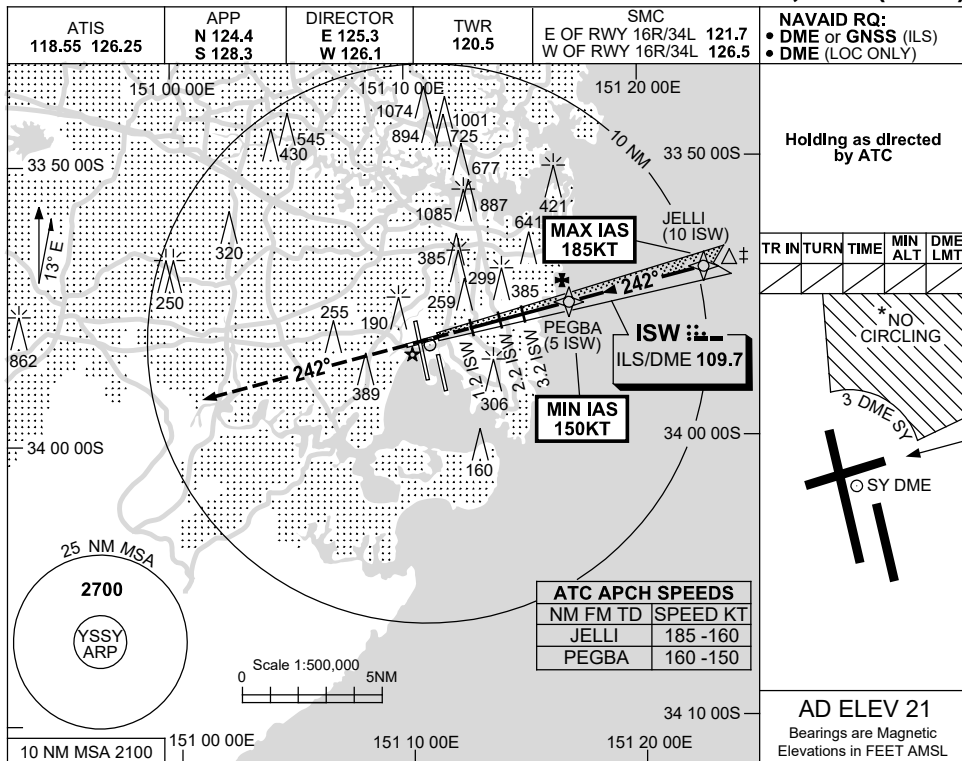


**USE QNH** ILS or LOC RWY 25  
**SYDNEY/KINGSFORD SMITH, NSW (YSSY)**

**17 JUN 2021**

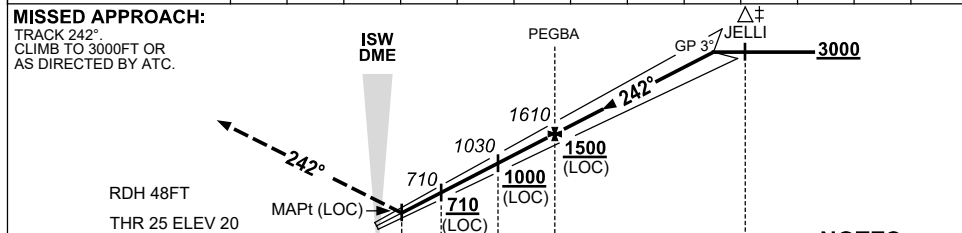


**Holding as directed by ATC**

TR	IN	TURN	TIME	MIN ALT	DME LMT
* NO CIRCLING					
3 DME SY					

**AD ELEV 21**  
 Bearings are Magnetic  
 Elevations in FEET AMSL

NM TO ISW DME	1.8	2	2.2	3	3.2	4	5	6	7	8	9	9.4	
ALT (3° APCH PATH)	580	650	710	970	1030	1290	1610	1920	2240	2560	2880	3000	



NM TO ISW DME	0	1.2	2.2	3.2	5	10
NM TO THR 25	0	2	3	4.8	9.8	

- NOTES**
- MAX IAS : JELLI : 185KT.
  - ACFT MAY BE RADAR VECTORED TO FNA.
  - NO CIRCLING BEYOND 3 DME SY EAST OF RWY 16R & NORTH OF RWY 25.
  - SPECIAL ALTN MNM 700/2.5KM. (NOT APPLICABLE TO LOC/DME).

CATEGORY	A	B	C	D
S-I ILS		<b>230</b> (210-1.5)	1500 RVR	
S-I LOC		<b>580</b> (559-3.2)		
CIRCLING*	<b>710</b> (689-2.4)		<b>1000</b> (979-4.0)	<b>1000</b> (979-5.0)
ALTERNATE*	(1189-4.4)		(1479-6.0)	(1479-7.0)

Changes: NOTE 2. SSYI06-167