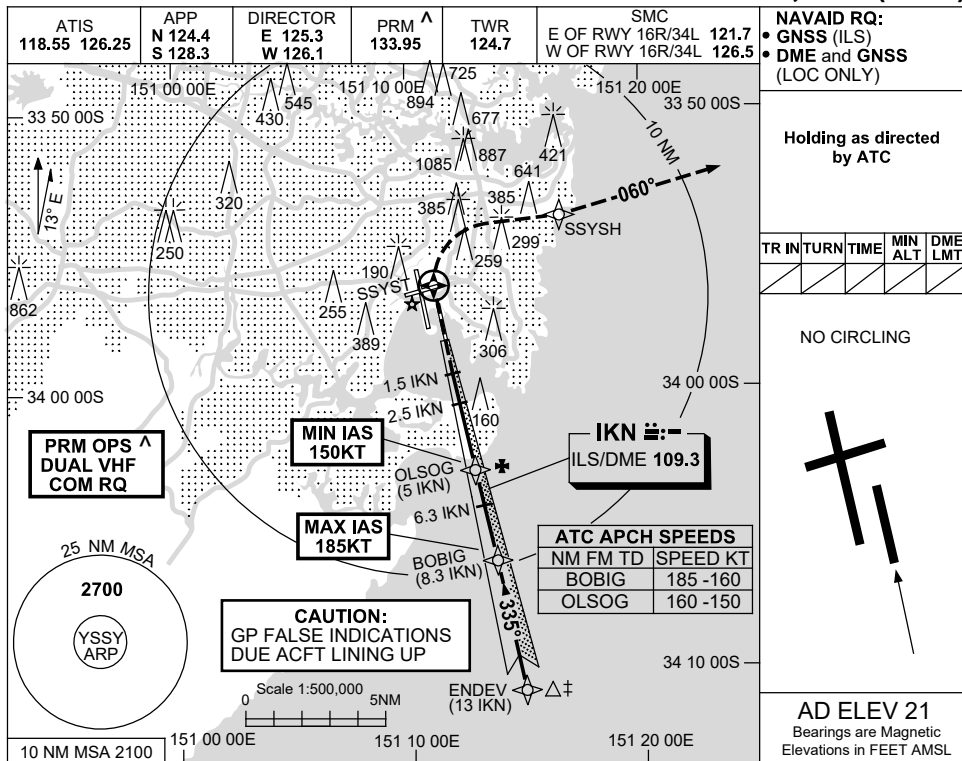


30 NOV 2023

SYDNEY/KINGSFORD SMITH, NSW (YSSY)



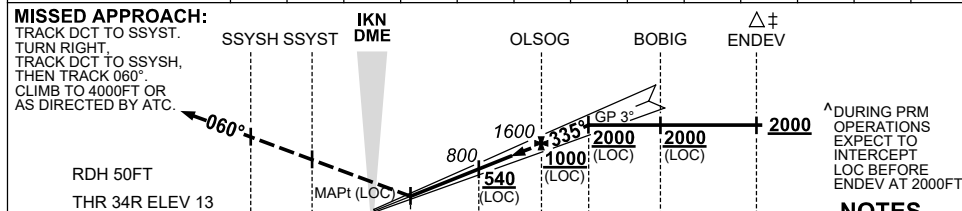
Holding as directed by ATC

TR IN	TURN	TIME	MIN ALT	DME LMT
/	/	/	/	/

NO CIRCLING

AD ELEV 21
Bearings are Magnetic
Elevations in FEET AMSL

NM TO IKN DME	1.5	2	2.5	3	4	5	6	6.3				
ALT (3° APCH PATH)	500	650	800	960	1280	1600	1920	2000				



NM TO IKN DME	1.8	0	1.5	2.5	5	6.3	8.3	13
NM TO THR 34R	2	0	1.3	2.3	4.8	6.1	8.1	12.8

CATEGORY	A	B	C	D
S-I ILS (3.6% MAP)		220 (207-1.2)	1000 RVR	
S-I ILS (2.5% MAP)		460 (447-2.2)		
S-I LOC		500 (487-2.4)		
CIRCLING	NOT AUTHORISED			
ALTERNATE *	(1189-4.4)		(1479-6.0) (1479-7.0)	

*1. MAX IAS: BOBIG : 185KT, MAP UNTIL SSYSH : 185KT.
 *2. ACFT MAY BE RADAR VECTORED TO FNA.
 *3. SIMULTANEOUS APCH AUTHORISED WITH RWY 34L. SEE PRM USER INSTRUCTIONS FOR ADDN RQMTNS.
 *4. SPECIAL ALTN MNM 700/2.5KM (NOT APPLICABLE TO LOC/DME).

Changes: Editorial. **CAUTION: CLOSELY SPACED PARALLEL RUNWAYS** ^ SYI105-177