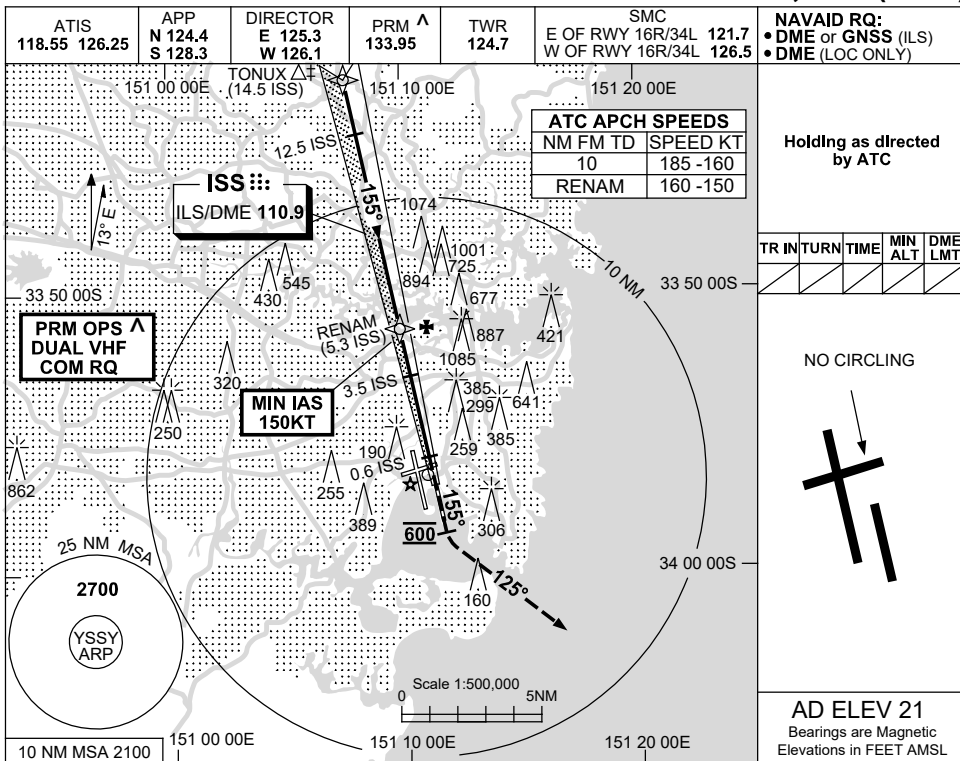
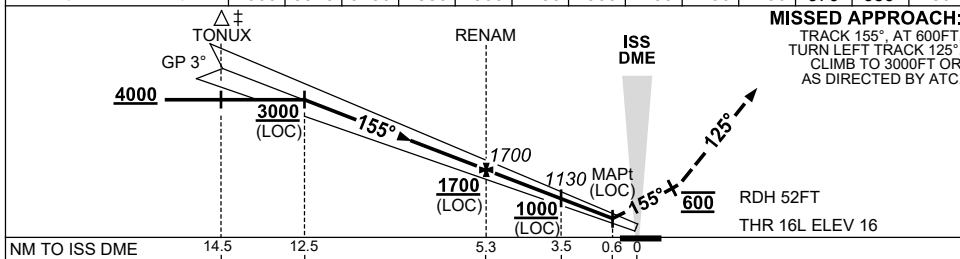


USE QNH ILS or LOC RWY 16L - Page 1
SYDNEY/KINGSFORD SMITH, NSW (YSSY)

9 SEP 2021



NM TO ISS DME	12.5	11	10	9	8	7	6	5.3	4	3.5	3	2	1.5
ALT (3° APCH PATH)	4000	3520	3200	2880	2560	2250	1930	1700	1290	1130	970	650	480



NOTES

- ‡1. ACFT MAY BE RADAR VECTORED TO FNA.
- ^2. SIMULTANEOUS APCH AUTHORISED WITH RWY 16R. SEE PRM USER INSTRUCTIONS FOR ADDN RQMNTS.
- *3. SPECIAL ALTN MNM 700/2.5KM.

CATEGORY	A	B	C	D
S-I ILS		220 (204) 0.8	550 RVR	
S-I LOC		480 (459-1.7)		
CIRCLING	NOT AUTHORISED			
ALTERNATE*	(1189-4.4)		(1479-6.0)	(1479-7.0)

Changes: NOTE 2.

SSY103-168

CAUTION: CLOSELY SPACED PARALLEL RUNWAYS ^