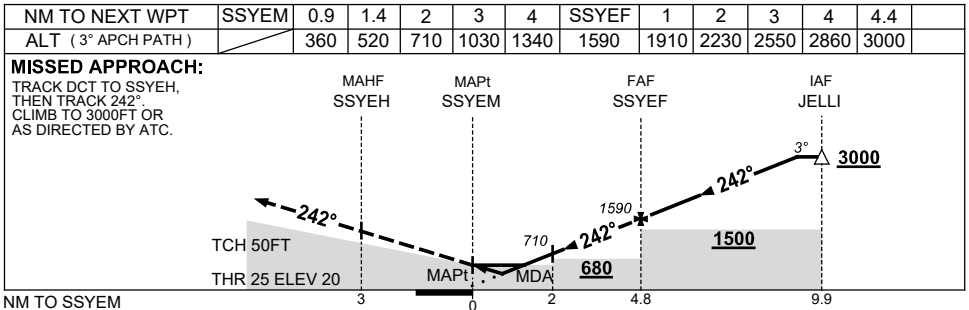
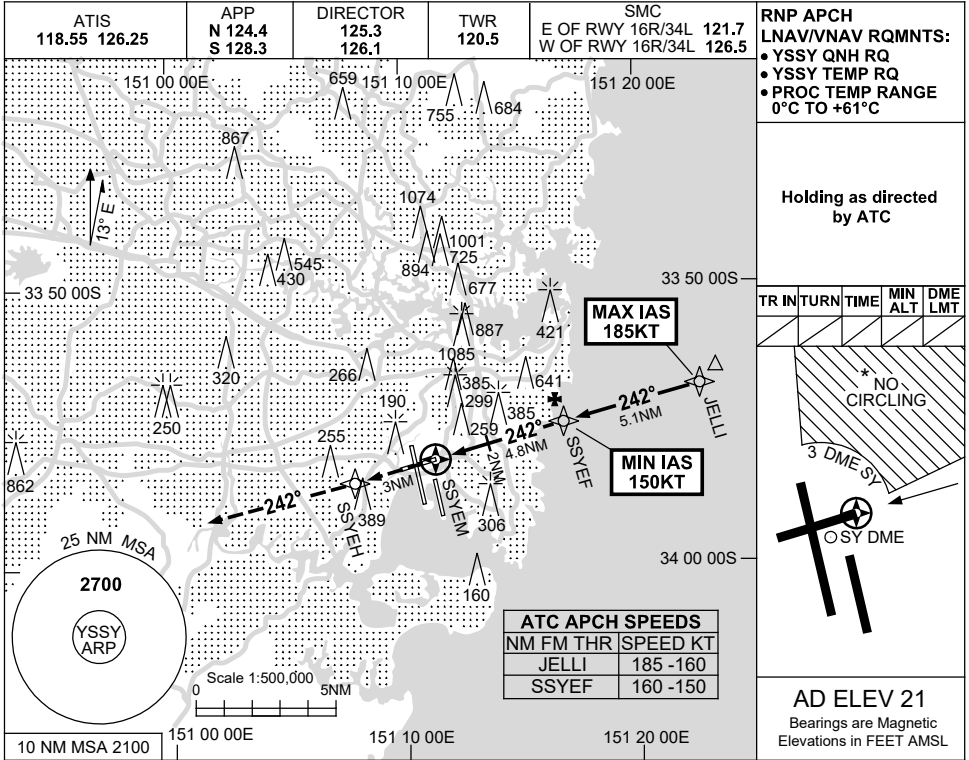


USE QNH

RNP RWY 25

30 NOV 2023

SYDNEY/KINGSFORD SMITH, NSW (YSSY)



**NOTES**

CATEGORY	A	B	C	D
LNAV/VNAV		360 (340-1.9)		
LNAV		520 (499-2.8)		
CIRCLING *	710 (689-2.4)	1000 (979-4.0)	1000 (979-5.0)	
ALTERNATE	(1189-4.4)	(1479-6.0)	(1479-7.0)	

1. MAX IAS: JELLI : 185KT.  
 \* 2. NO CIRCLING BEYOND 3 DME SY EAST OF RWY 16R & NORTH OF RWY 25.

Changes: Editorial. SSYGN06-177