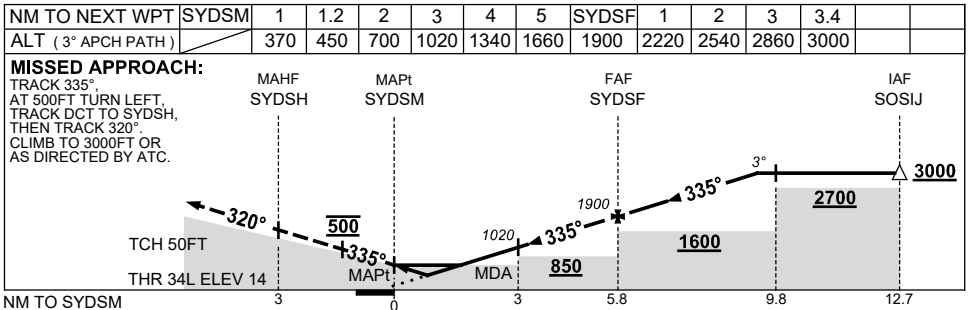
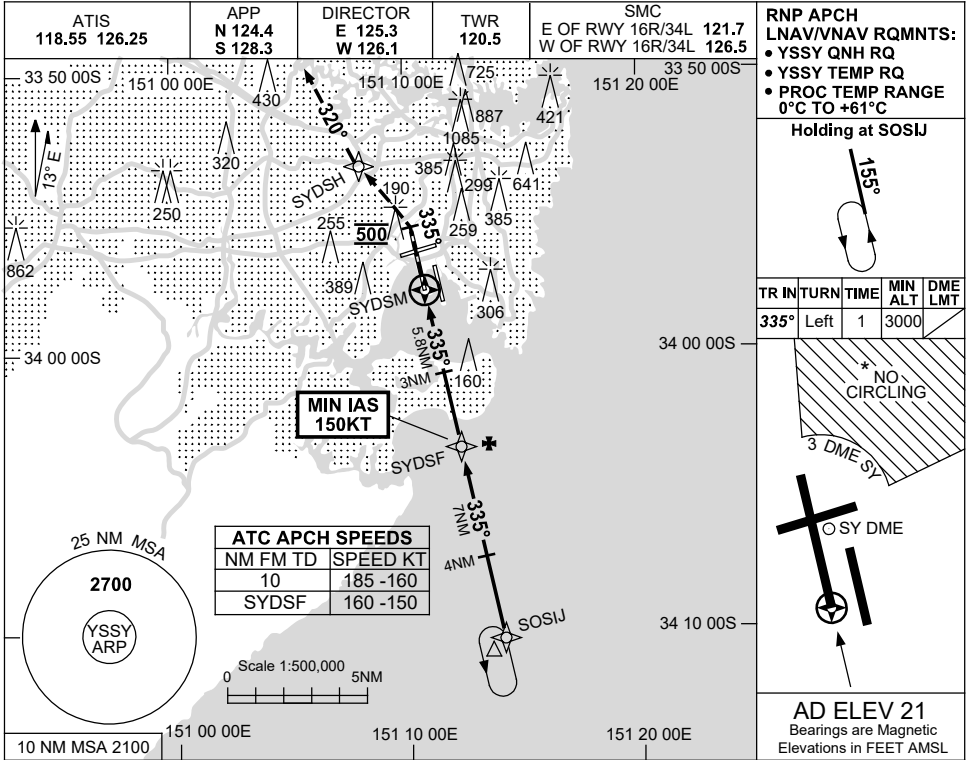


USE QNH

RNP RWY 34L

8 SEP 2022

SYDNEY/KINGSFORD SMITH, NSW (YSSY)



CATEGORY	A	B	C	D
LNAV/VNAV		370 (356-1.6)		
LNAV		450 (436-2.0)		
CIRCLING *	710 (689-2.4)		1000 (979-4.0)	1000 (979-5.0)
ALTERNATE	(1189-4.4)		(1479-6.0)	(1479-7.0)

NOTES
 1. MAX IAS:
 INITIAL : 210KT.
 HOLDING: 210KT.
 * 2. NO CIRCLING
 BEYOND 3 DME SY
 EAST OF RWY 16R &
 NORTH OF RWY 25.

Changes: VISIBILITY.

SSYGN04-172