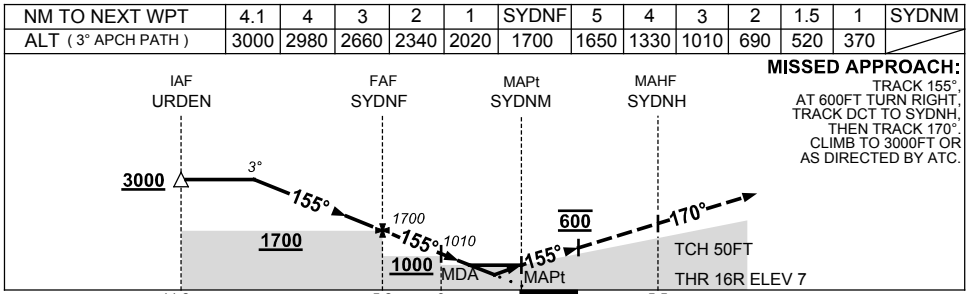
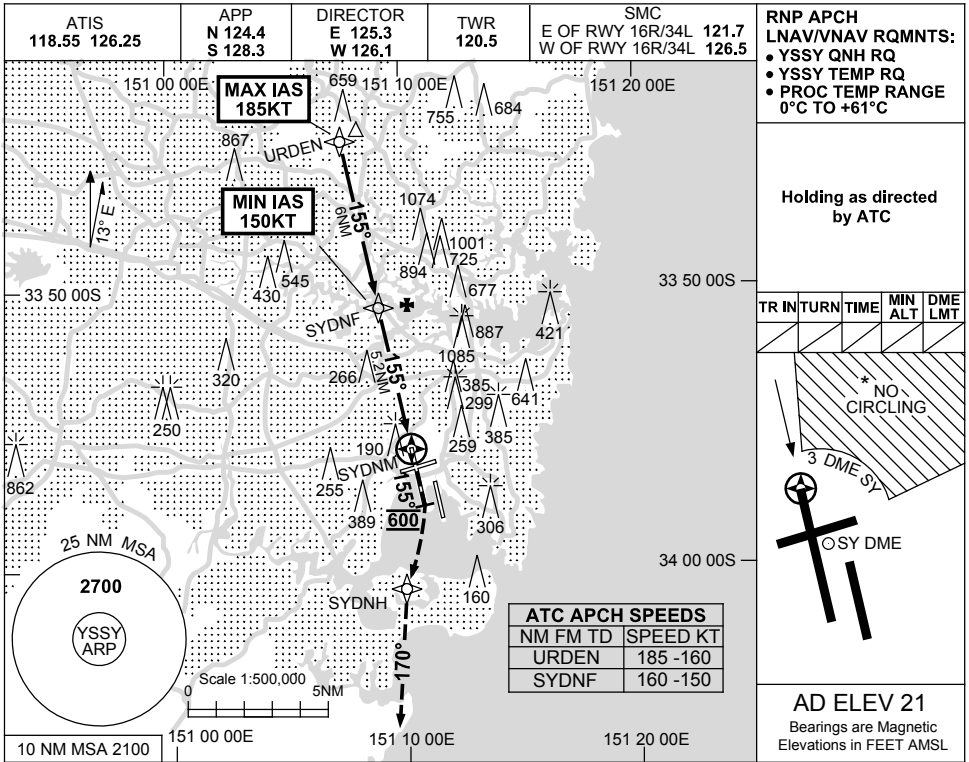


USE QNH

RNP RWY 16R

8 SEP 2022

**SYDNEY/KINGSFORD SMITH, NSW (YSSY)**



CATEGORY	A	B	C	D
LNAV/VNAV		370 (363-1.2)		
LNAV		520 (513-2.1)		
CIRCLING *	710 (689-2.4)		1000 (979-4.0)	1000 (979-5.0)
ALTERNATE	(1189-4.4)		(1479-6.0)	(1479-7.0)

- NOTES**
1. MAX IAS:  
URDEN : 185KT.  
MAP TURN: 200KT.
  - \* 2. NO CIRCLING  
BEYOND 3 DME SY  
EAST OF RWY 16R &  
NORTH OF RWY 25.

Changes: VISIBILITY.

SSYGN03-172