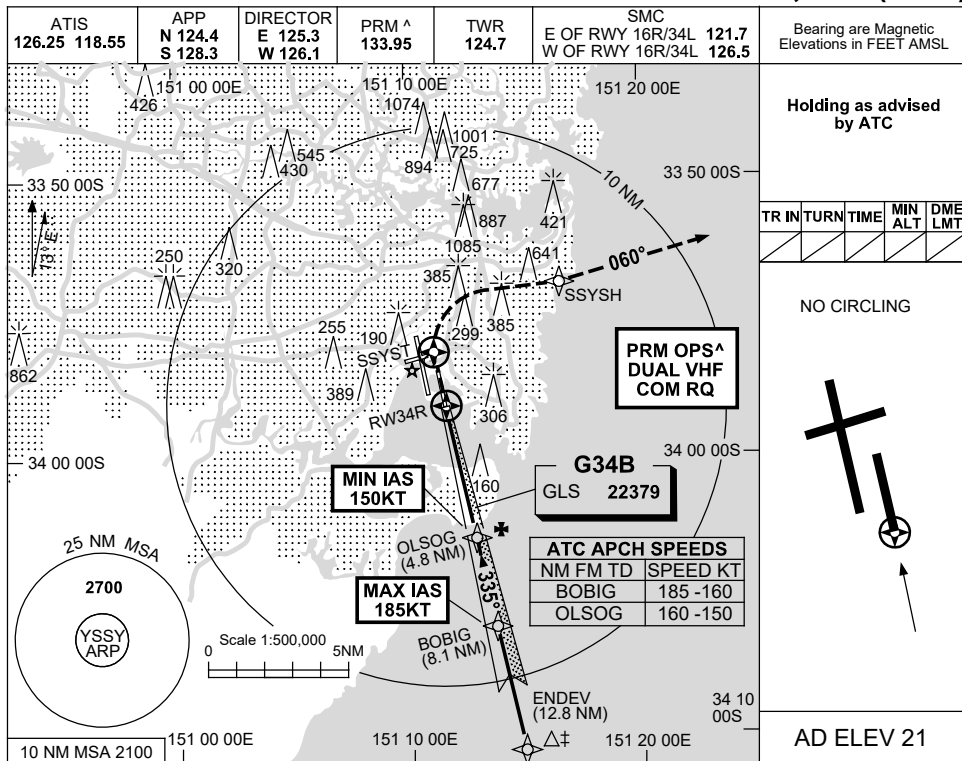


USE QNH GLS RWY 34R SYDNEY/KINGSFORD SMITH, NSW (YSSY)

30 NOV 2023



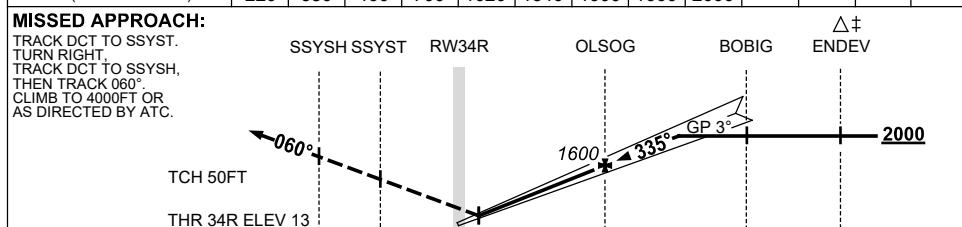
Holding as advised by ATC

TR IN	TURN	TIME	MIN ALT	DME LMT

NO CIRCLING

AD ELEV 21

NM TO RW34R	0.5	1	1.2	2	3	4	4.8	5	6.1			
ALT (3° APCH PATH)	220	380	460	700	1020	1340	1600	1660	2000			



NM TO RW34R

	2	0	4.8	8.1	12.8
--	---	---	-----	-----	------

NOTES

1. MAX IAS:
BOBIG: 185KT,
MAP UNTIL
SSYSH: 185KT.
2. ACFT MAY BE
RADAR VECTORED
TO FNA.
3. SIMULTANEOUS APCH
AUTHORISED WITH
RWY 34L. SEE PRM
USER INSTRUCTIONS
FOR ADDN RQMNTS.

CATEGORY	A	B	C	D
S-I GLS (3.6% MAP)		220(207-1.2)	1000 RVR	
S-I GLS (2.5% MAP)		460(447-2.2)		
CIRCLING	NOT AUTHORISED			
ALTERNATE	(1189-4.4)		(1479-6.0)	(1479-7.0)

Changes: Editorial. SSYGL06-177

CAUTION: CLOSELY SPACED PARALLEL RUNWAYS ^