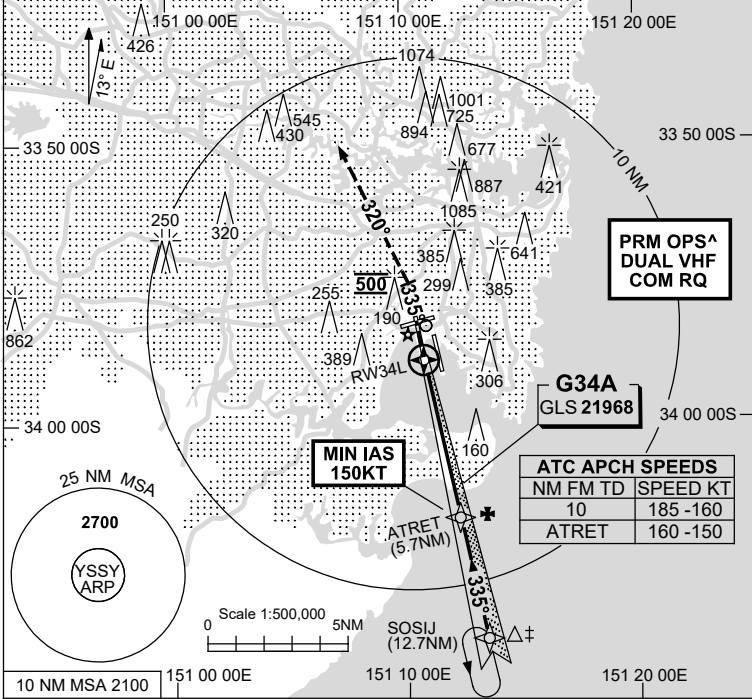


USE QNH **GLS RWY 34L**
SYDNEY/KINGSFORD SMITH, NSW (YSSY)

7 SEP 2023

ATIS 126.25 118.55	APP N 124.4 S 128.3	DIRECTOR E 125.3 W 126.1	PRM ^ 119.45	TWR 120.5	SMC E OF RWY 16R/34L 121.7 W OF RWY 16R/34L 126.5
-----------------------	---------------------------	--------------------------------	-----------------	--------------	---

Bearing are Magnetic
Elevations in FEET AMSL



Holding at SOSIJ

TR	IN	TURN	TIME	MIN ALT	DME LMT
335°	Left	1	1	3000	

**PRM OPS^
DUAL VHF
COM RQ**

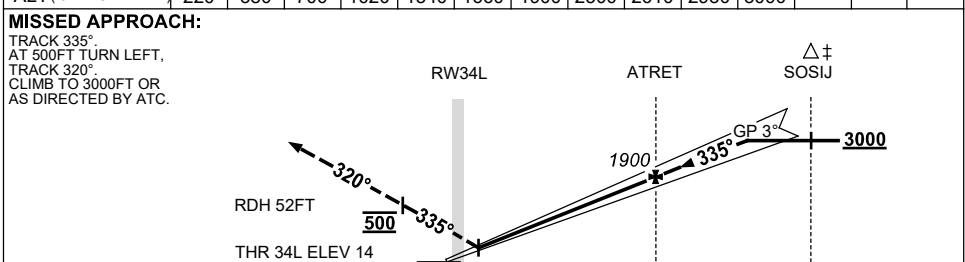
**G34A
GLS 21968**

ATC APCH SPEEDS	
NM	FM TD SPEED KT
10	185-160
ATRET	160-150

NO CIRCLING
3 DME SY

AD ELEV 21

RW34L DIST	0.5	1	2	3	4	5	5.7	7	8	9	9.2			
ALT (3° APCH PATH)	220	380	700	1020	1340	1660	1900	2300	2610	2930	3000			



NOTES

- ACFT MAY BE RADAR VECTORED TO FNA.
- SIMULTANEOUS APCH AUTHORISED WITH RWY 34R. SEE PRM USER INSTRUCTIONS FOR ADDN RQMNTS.
- NO CIRCLING BEYOND 3 DME SY EAST OF RWY 16R & NORTH OF RWY 25.

CATEGORY	A	B	C	D
S-I GLS	220 (206) 0.8		800 RVR	
CIRCLING *	710 (689-2.4)		1000 (979-4.0)	1000 (979-5.0)
ALTERNATE	(1189-4.4)		(1479-6.0)	(1479-7.0)

Changes: Editorial.

SSYGL05-176

CAUTION: CLOSELY SPACED PARALLEL RUNWAYS ^