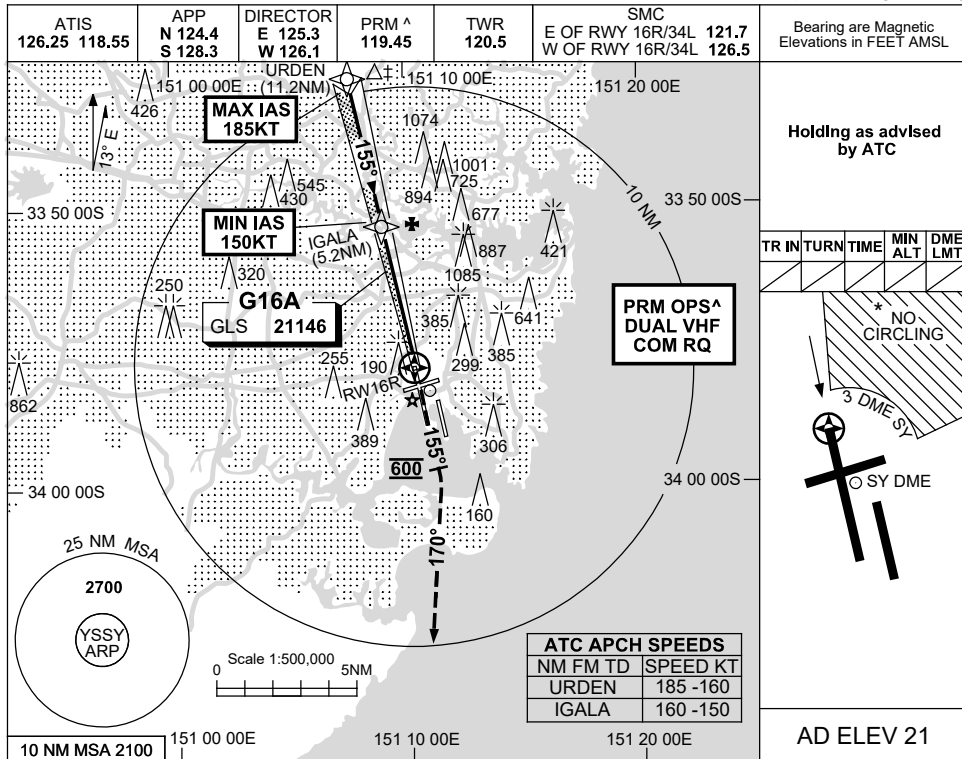
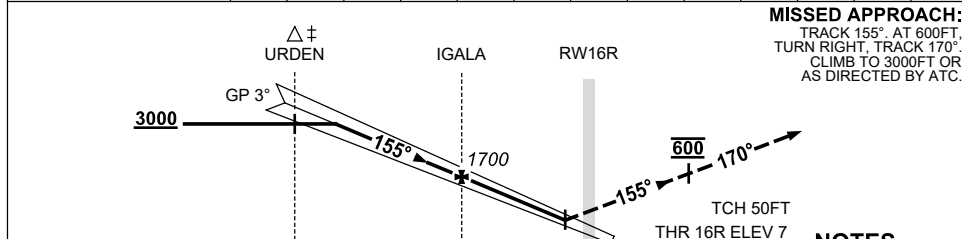


USE QNH GLS RWY 16R
SYDNEY/KINGSFORD SMITH, NSW (YSSY)

9 SEP 2021



RWY16R DIST	9.2	9	8	7	6	5.2	4	3	2	1	0.5		
ALT (3° APCH PATH)	3000	2920	2600	2290	1970	1700	1330	1010	690	380	210		



- NOTES**
- MAX IAS:
URDEN : 185KT.
 - ACFT MAY BE
RADAR VECTORED
TO FNA.
 - SIMULTANEOUS APCH
AUTHORISED WITH
RWY 16L. SEE PRM
USER INSTRUCTIONS
FOR ADDN RQMNTS.
 - NO CIRCLING
BEYOND 3 DME SY
EAST OF RWY 16R &
NORTH OF RWY 25.

CATEGORY	A	B	C	D
S-I GLS		210 (203) 0.8		550RVR
CIRCLING *	710 (689-2.4)		1000 (979-4.0)	1000 (979-5.0)
ALTERNATE	(1189-4.4)		(1479-6.0)	(1479-7.0)

Changes: NOTE 3.

SSYGL03-168

CAUTION: CLOSELY SPACED PARALLEL RUNWAYS ^